



# Wind turbine wind tunnel cost





## Overview

---

The main cost drivers are facility size, test-section dimensions, engine or blower capacity, data acquisition systems, and installation complexity. This article outlines the price ranges and what affects them, using clear cost data for U. Basic open-circuit or small. Buyers typically see wide ranges for wind tunnel projects, reflecting scale, speed, and instrumentation. – Data and results are derived from 2023 commissioned plants. The cost of a wind turbine varies widely based on size and project specifics, but generally ranges from a minimum of \$15,000 for a small residential rooftop unit up to \$4 million or more for an industrial multi-megawatt utility-scale turbine, with most commercial installations averaging \$750,000 to. A utility-scale wind turbine costs between \$1. 2 million per MW of installed nameplate capacity. How much do commercial wind turbines cost will vary significantly. While renewable energy is no longer a “new” idea and large, green energy wind farms are more common – and more efficient – the combination of technology, construction, and operating expenses mean that a wind turbine's initial cost is very expensive.



## Wind turbine wind tunnel cost



[Services & rates , UW William E. Boeing Department of Aeronautics](#)

Rates for the Kirsten Wind Tunnel (8' by 12') This example cost estimate is for a customer interested in conducting a wind tunnel test of an aircraft. Electronic Pressure Scanning (EPS) data will be ...

### [Wind Tunnel Cost Guide 2026 - LatestCost - Real-Time Price Insights](#)

A detailed table below shows the major cost blocks and typical ranges, with assumptions of standard build quality and a U.S. delivery footprint. The breakdown combines total project costs ...

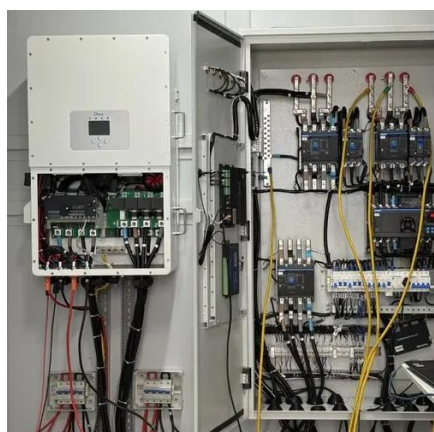


### Wind Turbine Costs Explained

For example, a wind turbine with a nameplate (rated) capacity of 1 MW could go for \$1.3-\$2.2 million. On the other hand, a residential wind turbine producing under 100 kilowatts costs about ...

### [How Much Do Wind Turbines Cost? \(2026\) . Today's Homeowner](#)

Costs for utility-scale wind turbines can be broken down into three categories: manufacturing, transport and installation, and operations and maintenance. Researchers are ...



### How Much Does A Wind Turbine Cost?

For homeowners, businesses, utilities and governments assessing the economic viability of wind energy, the pivotal question arises - how much does the average wind turbine truly cost?

### The Price Tag of Wind Turbine Power

The initial investment costs of a wind turbine power plant comprise a significant portion of the overall expenditure. This includes land acquisition, environmental impact assessments, and ...



### [Cost Analysis: How Much Do Commercial Wind Turbines Really Cost?](#)

Understanding how much do commercial wind turbines cost is critical for investors, regulators, and environmentalists alike. This cost analysis examines the numerous aspects ...

### [Wind Turbine Cost: Worth The Million-Dollar Price In 2022?](#)



The typical wind turbine is 2-3 MW in power, so most turbines cost in the \$2-4 million dollar range. Operation and maintenance runs an additional \$42,000-\$48,000 per year according to ...



### Cost of Wind Energy Review: 2024 Edition

The 13th annual Cost of Wind Energy Review uses representative utility-scale and distributed wind energy projects to estimate the levelized cost of energy (LCOE) for land-based and offshore wind ...

### [Wind Turbine Cost Guide 2025: Complete Pricing Breakdown \(\\$700 ...](#)

Whether you're considering a small residential turbine or evaluating a large commercial wind farm investment, the comprehensive cost analysis framework presented in this guide provides ...

**Outdoor Cabinet BESS**  
50 kWh/500 kWh Battery Storage System  
Industrial and Commercial Energy Storage

- All in One**  
Integrating battery packs
- Intelligent Integration**  
Integrated photovoltaic storage cabinet
- High-capacity**  
50-500kWh
- Rated AC Power**  
50-100kW
- Degree of Protection**  
IP54
- Altitude**  
3000m(>3000m derating)
- Operating Temperature Range**  
-20-60°C(Derating above 50 °C)



## Contact Us

---

For catalog requests, pricing, or partnerships, please visit:

<https://iwap.com.pl>

Phone: +34 919 456 782

Email: [info@iwap.com.pl](mailto:info@iwap.com.pl)

Scan the QR code to access our WhatsApp.

