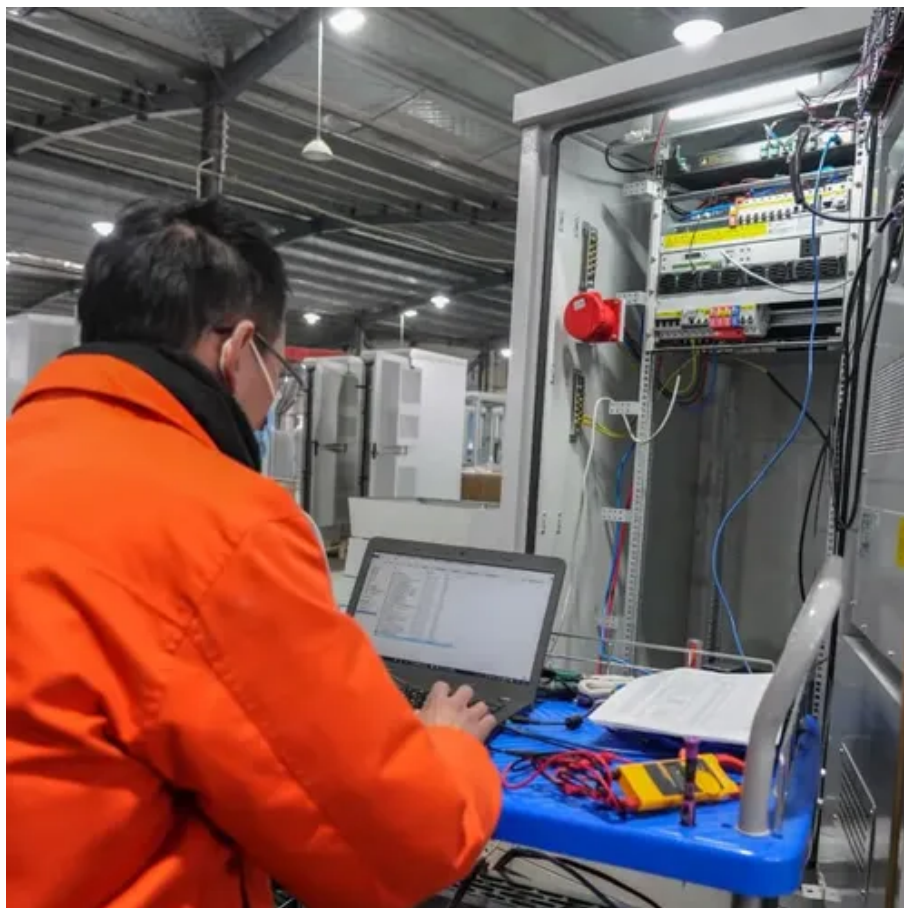




Wind power grid connection price list





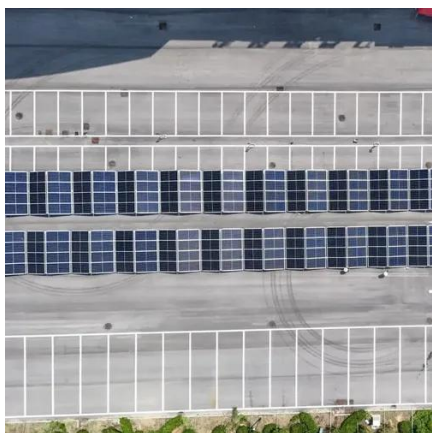
Overview

A small, grid-tied system around 2–10 kW may run from \$15,000 to \$45,000 installed, while larger 20–100 kW systems for rural homes or farms can exceed \$150,000 to \$350,000. Prices reflect equipment, labor, permits, and electrical integration. A good baseline is to expect \$100-300/kW of grid inter-connection costs, or \$3-10/kW-km, over a typical distance of 10-70 km. But the requirement to fund network upgrade costs can push grid connections to cost more than developing renewables projects themselves?

! The best resource we have ever seen. Dramatic Cost Range: Wind turbine costs span from \$700 for small residential units to over \$20 million for offshore turbines, with total project costs varying from \$10,000 to \$4,000+ per kW installed depending on scale and location. Commercial Projects Offer Best Economics: Utility-scale wind. Buyers typically pay a broad range for wind turbines, depending on capacity, installation site, and grid interconnection requirements. This article presents practical price ranges and how to estimate a. The 13th annual Cost of Wind Energy Review uses representative utility-scale and distributed wind energy projects to estimate the levelized cost of energy (LCOE) for land-based and offshore wind power plants in the United States. In the US, the average cost for onshore wind farms was approximately \$13 million to \$18 million per MW in 2022. Offshore wind farm development, however, is considerably more expensive, often. This dashboard provides an overview on the latest wind costs.

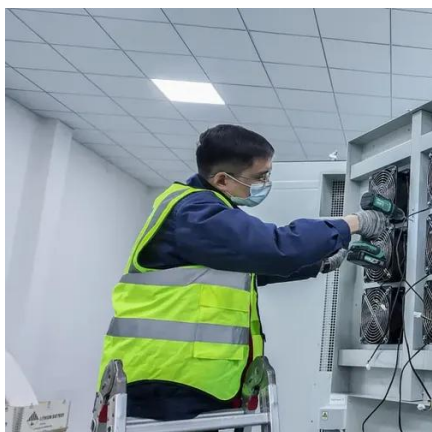


Wind power grid connection price list



[Wind turbine installation & maintenance costs: A complete guide](#)

Depending on the project's complexity, expect to pay anywhere from \$5,000 to \$25,000 or more for professional installation services. Large-scale projects obviously incur significantly higher costs. For ...



[Wind Turbine Cost Breakdown 2026 - LatestCost - Real-Time Price ...](#)

These snapshots show how size, terrain, and grid needs shift price bands. For every scenario, a detailed permit list and site assessment are essential to validate budgets.

[What Are the Startup Costs for a Wind Farm?](#)

Discover the startup costs involved in launching a wind farm. Learn about equipment, site development, and financing strategies for success.



[Wind Turbine Installation Costs and Price Guide](#)

Typical installed costs for residential wind turbines span broad ranges depending on kilowatt rating and configuration. A small, grid-tied system around 2-10 kW may run from \$15,000 to ...



Cost of Wind Energy Review: 2024 Edition

The 13th annual Cost of Wind Energy Review uses representative utility-scale and distributed wind energy projects to estimate the levelized cost of energy (LCOE) for land-based and offshore wind ...



WIND POWER GRID CONNECTION PRICE LIST

This TSO has issued preliminary grid requirements concerning wind turbine connection and operation on the high voltage network in a document as an appendix No. 40 (CAMMESA, 2010) to the existing ...



Wind Turbine Prices

Wind turbine prices are a crucial consideration for anyone looking to invest in renewable energy. As the world increasingly turns to sustainable power sources, understanding the costs ...



[Wind Turbine Cost Guide 2025: Complete Pricing Breakdown \(\\$700 ...](#)



This comprehensive guide examines every aspect of wind turbine costs in 2025, from initial capital expenditures to long-term operational expenses, helping you understand when wind ...



Wind Costs

This dashboard provides an overview on the latest wind costs.

Cost of grid interconnection?

The best resource we have ever seen into the cost of grid interconnection for different power generation sources in North America is compiled by Lawrence Berkeley Laboratory.





Contact Us

For catalog requests, pricing, or partnerships, please visit:

<https://iwap.com.pl>

Phone: +34 919 456 782

Email: info@iwap.com.pl

Scan the QR code to access our WhatsApp.

