



# Wind intake on both sides of the generator





## Overview

---

Position the generator upwind of home openings, such as doors and vents, to direct exhaust away from indoor air intake points. Air cooled unit draws cooling air from different ends of the unit to cool the system, dependent upon the units cooling system design. Open packages are usually installed inside a building or beneath a canopied structure to protect them from the elements. In this white paper, CFD has been utilized to look at the. I may have to duct the cold air intake from below the enclosure and exhausting straight onto the underside on the generator, hot air exhaust ducted from the top of the enclosure ducted down and exiting underneath the enclosure. The National Electric Code (NEC) implies that a minimum space of 3 ft should be prepared on all sides of the generator to be ensured flowing cooling air, so the generator should be placed in an open and ventilating I have a new 5,000 watt. Rehlko uses CFD for many aspects of electrical generator design such as alternator cooling, exhaust system, engine air intake, engine fuel system, and cooling systems design, including the fan blade as well as enclosure restriction.



## Wind intake on both sides of the generator



[Knowledge: Clearing the surrounding area of debris and snow for ...](#)

Ensuring the area around your generator is clear and free of obstructions is essential for optimal performance and safety. This article provides a detailed guide on maintaining clearance and ...

[Generator Placement: The Wind Direction Detail That Keeps Homes ...](#)

Wind direction plays a crucial role in how generator exhaust disperses and affects indoor carbon monoxide levels. If the wind blows directly toward your open windows or vents, exhaust ...



[Air flow requirements for enclosure , Power Equipment Forum](#)

The primary regulator & hose can be run out a hole in the intake side for hot weather use, or on the exhaust side for cold weather use where the exhaust air keeps the tank at a moderately ...



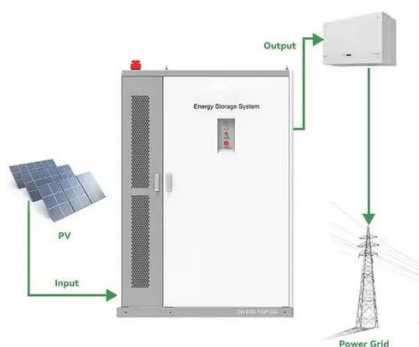
### Generator Engine Room Ventilation

It is important to note that cooling air is needed for more than just the engine; the generator intake also requires cool clean air. The most effective way to do this is to provide a ...



### [Where does air intake from on inverter generators? : r/Generator](#)

Yes, the air intake is the grille on the bottom of the front panel. This one intake provides cooling air for the inverter and the engine, plus air that the engine needs to run.



### [Examples of Airflows for Different Enclosed Generator Applicatio](#)

When discharging air vertically, because the generator is surrounded on all sides, can result in higher than ambient air temperatures being pushed into inlet vents.



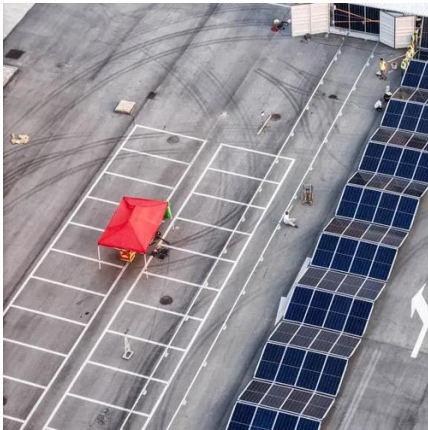
### **Generator Enclosure Spacing**

In this white paper, CFD has been utilized to look at the influences of walls near generator enclosures as well as the influence of prevailing winds.

### [Wind intake on both sides of the generator](#)



Since the induction generator has been introduced in the fixed-speed wind turbine, here we mainly look at the frequency of voltage and current generated in the rotor side.



## **GENERIC GENERATOR INSTALLATION MANUAL**

When a generator is installed and operated in an indoor environment, adequate ventilation for heat dissipation and combustion is required. Ventilation is typically done through the use of an air inlet, air ...



## Contact Us

---

For catalog requests, pricing, or partnerships, please visit:

<https://iwap.com.pl>

Phone: +34 919 456 782

Email: [info@iwap.com.pl](mailto:info@iwap.com.pl)

Scan the QR code to access our WhatsApp.

