



# Will there be wind all year round for wind power generation

## 12.8V 200Ah





## Overview

---

Wind energy production is an integral part of the renewable energy landscape, but its efficiency is influenced by seasonal trends. These variations stem from changes in weather patterns, temperature differences, and wind speeds that fluctuate throughout the year. In this article, we explore how the. What is wind energy and how do wind turbines work?

Wind energy (or wind power) refers to the process by which wind turbines convert the movement of wind into electricity. Wind is caused by the Sun's uneven heating of the atmosphere, the irregularities of the Earth's surface, and the rotation of the. Wind plant performance—how much electricity a wind plant generates compared with its maximum possible generation—depends almost entirely on the availability of wind resources, which vary depending on both the time of year and the geographic region. Accurate forecasting models are required for successfully integrating such fluctuating generation into the grid and market. Aggregating many wind power plants will smooth variability to a certain extent, which will also.



## Will there be wind all year round for wind power generation



### [Frequently Asked Questions about Wind Energy](#)

The Wind Energy Technologies Office invests in wind energy science research and development activities to enable greater use of abundant domestic wind resources for electric power generation ...

### [VARIABILITY AND PREDICTABILITY OF LARGE-SCALE WIND ...](#)

Wind power generation fluctuates because of continually changing wind speeds. Accurate forecasting models are required for successfully integrating such fluctuating generation into the grid and market.

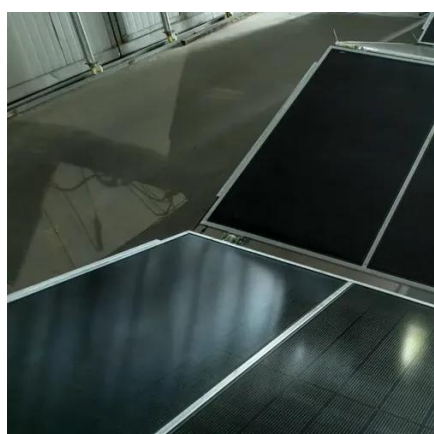


### [U.S. wind generation falls into regional patterns by season](#)

Wind plant performance--how much electricity a wind plant generates compared with its maximum possible generation--depends almost entirely on the availability of wind resources, which ...

### **Wind Power Generation**

However, the power generated by wind turbines varies rapidly due to the fluctuation of wind speed and wind direction. It is also dependent on terrain, humidity, date and time of the day, making grid ...



### [Wind Energy And Seasonal Changes - WeatherSend](#)

Understanding wind patterns and their seasonal variations is crucial for optimizing wind energy production. Wind speeds typically increase in winter due to the temperature disparities between the ...

### **Identification of reliable locations for wind power generation through**

Using weather reanalysis data, we analyzed the global distribution of and trends in wind droughts using an energy deficit metric that integrates the depth and duration of wind droughts.



### [How 4 Seasonal Trends Change and Impact Wind Energy Production](#)

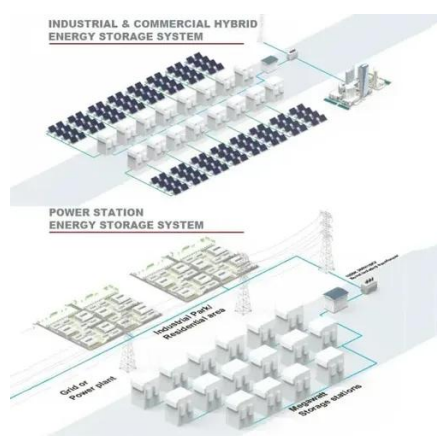
Wind energy production is an integral part of the renewable energy landscape, but its efficiency is influenced by seasonal trends. These variations stem from changes in weather patterns, ...



### **Wind Energy Factsheet**



Over 2 Mt of wind turbine blades are expected to be retired in the U.S. by 2050. While current landfilling costs are relatively low, improved design, materials, recycling technology, and waste management ...



### [How do the seasons of the year affect wind energy production?](#)

In short, the seasons of the year have a significant impact on wind energy production. Each season brings challenges and opportunities, but with technological advances and appropriate strategies, it is ...



## Contact Us

---

For catalog requests, pricing, or partnerships, please visit:

<https://iwap.com.pl>

Phone: +34 919 456 782

Email: [info@iwap.com.pl](mailto:info@iwap.com.pl)

Scan the QR code to access our WhatsApp.

