



# Which liquid flow battery is the best for Nouakchott communication base station





## Overview

---

Lead-acid batteries, specifically Valve-Regulated Lead-Acid (VRLA) batteries, have proven to be an excellent solution for these critical applications. A 12V 30Ah LiFePO<sub>4</sub> battery has a nominal voltage of 12V and a capacity of 30 ampere - hours (Ah). LiFePO<sub>4</sub>, or lithium iron phosphate, is a type of lithium - ion battery. A telecom base station backup battery is the safeguard that keeps communication flowing when the grid fails. But not all backup batteries are created equal. Amid diverse flow battery systems, vanadium redox flow batteries (VRFB) are of interest due to their desirable characteristics, such as long cycle life, roundtrip efficiency, scalability and power/energy flexibility, and high tolerance to deep discharge [ [7], [8], [9]].



## Which liquid flow battery is the best for Nouakchott communication b



### [BATTERY TECHNOLOGY FOR COMMUNICATION BASE STATIONS](#)

Among various battery technologies, Lithium Iron Phosphate (LiFePO<sub>4</sub>) batteries stand out as the ideal choice for telecom base station backup power due to their high safety, long lifespan, and excellent ...

### [Communication base station liquid flow battery magnetic wind power](#)

Feb 1, 2018 · The paper summarizes the features of current and future grid energy storage battery, lists the advantages and disadvantages of different types of batteries, and points out



### [Replacement equipment on the flow battery tower of the ...](#)

These batteries excel in energy storage, making them ideal for larger installations that require consistent power over extended periods. Another alternative is the sodium-sulfur (NaS) battery.



### [Communication base station flow battery equipment of various ...](#)

Among various battery technologies, Lithium Iron Phosphate (LiFePO<sub>4</sub>) batteries stand out as the ideal choice for telecom base station backup power due to their high safety, long lifespan, and excellent ...



**12.8V 200Ah**

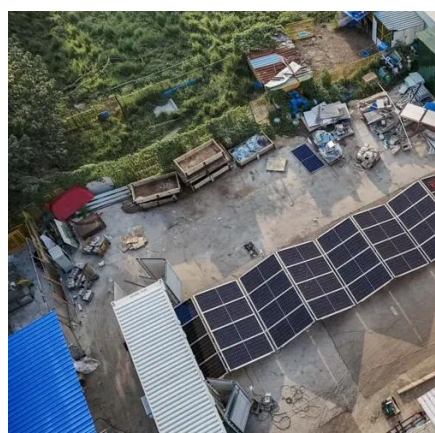


### [The scale of liquid flow batteries for communication base stations](#)

In this article, the schedulable capacity of the battery at each time is determined according to the dynamic communication flow, and the scheduling strategy of the standby power considering the ...

### [Liquid Flow Batteries for Communication Base Stations to Save ...](#)

A single 48V/200Ah LiFePO4 battery can power a 4G base station for 8-10 hours, replacing multiple lead-acid units and saving 40% in physical footprint. This advantage proves vital in



### [What equipment does the liquid flow battery in the communication ...](#)

What is a flow battery? One such option is the flow battery. These batteries excel in energy storage, making them ideal for larger installations that require consistent power over extended periods. ...

### [Can a 12V 30Ah LiFePO4 battery be used in a communication base ...](#)



12V 30Ah LiFePO4 batteries can be used in a variety of communication base station applications. For small - to - medium - sized base stations with relatively low power requirements, a single or a few ...

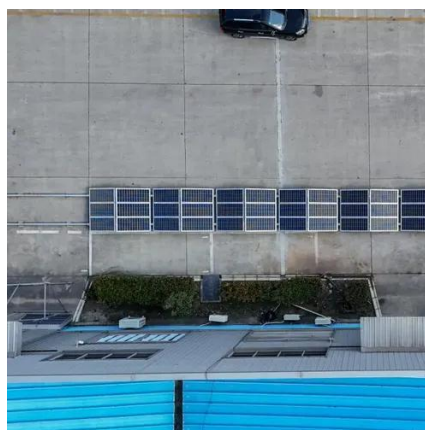


### [How to Choose the Right Backup Battery for Telecom Base Stations](#)

Base stations commonly use 12V, 24V, or 48V battery systems. Correct voltage alignment ensures efficiency and prevents equipment damage. 48V is the industry standard for most ...

### [Nouakchott All-vanadium Liquid Flow Battery](#)

Are all-liquid redox flow batteries a good choice? The all-liquid redox flow batteries are still the most matured of the RFB technology with All-Vanadium RFBs being the most researched and ...





## Contact Us

---

For catalog requests, pricing, or partnerships, please visit:

<https://iwap.com.pl>

Phone: +34 919 456 782

Email: [info@iwap.com.pl](mailto:info@iwap.com.pl)

Scan the QR code to access our WhatsApp.

