



What is the soh of electrochemical solar container battery





Overview

State of Health (SOH) indicates the overall condition and remaining useful life of a battery. Unlike SOC, which is a snapshot of current capacity, SOH is a more comprehensive measure, reflecting factors such as capacity fade, internal resistance, and the ability to deliver power. The state of charge of a battery describes the difference between a fully charged battery and the same battery in use. It is defined as the ratio of the remaining charge in the battery, divided by the maximum charge. However, their performance and lifespan depend heavily on two critical parameters: State of Charge (SOC) and State of Health (SOH).

Understanding these metrics is essential for maximizing efficiency, preventing failures, and reducing operational costs. On the one hand, significant errors from the battery. For example, a cell with a 48V, 100Ah capacity implies that the battery's capacity is $48V \times 100Ah = 4800Wh$, or 4.



What is the soh of electrochemical solar container battery



[Understanding State of Charge \(SOC\) and State of Health \(SOH\) in](#)

State of Health (SOH) indicates the overall condition and remaining useful life of a battery. Unlike SOC, which is a snapshot of current capacity, SOH is a more comprehensive measure, ...

[Understanding Battery Parameters: DOD, SOC, and SOH in Energy ...](#)

Discover the critical parameters of energy storage batteries: DOD, SOC, and SOH. Learn how these key metrics affect battery performance and longevity, enhancing the efficiency of energy ...



[Understanding State of Health \(SOH\) in Energy Storage Systems](#)

State of Health (SOH) is a vital metric in battery energy storage systems, representing the current performance and capacity of a battery relative to its original condition.

[What are SOC and SOH of a battery, how to measure them?](#)

What are SoC (state of charge) and SoH (state of health) for a battery? Understanding and monitoring cells' states, at a particular point in time, is often needed in battery development in order ...

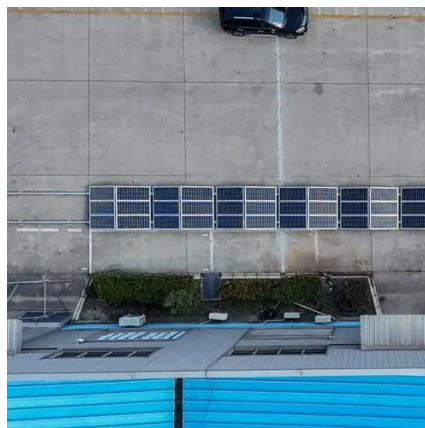


A Complete Guide to Battery State of Charge (SOC) and State of Health (SOH)

In this guide, we'll break down SOC and SOH, explore their significance, and share best practices for monitoring and maintaining your battery systems. Whether you're a Lifepo4 battery ...

[DOD, SOC, SOH Explained: Key Parameters of Energy Storage ...](#)

Monitoring SOH ensures system stability and reduces risks. In short, parameters like DOD, SOC, and SOH are not abstract--they are the language of battery performance.



[Battery State of Charge vs State of Health: Complete Guide](#)

Learn the difference between battery SoC and SoH, how to measure them, and best practices to extend battery life for EVs, solar, and devices.



2MW / 5MWh
Customizable

Dyness Knowledge , Solar and energy storage must-learn terminology ...

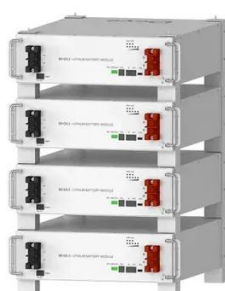


The SOH of the battery largely reflects the aging degree of the battery. The causes of battery aging are complex, and the academic community generally believes that lithium-ion ...



[What Are SOC, SOH, and Cycle Life? A Complete Guide to Battery](#)

State of Health (SOH) expresses battery aging as a percentage, comparing current maximum charge (Qmax) to original rated capacity -- similar to a "health index" in humans.



Deye Official Store

10 years warranty

[Understanding electrochemical reactions for SOC and SOH](#)

Due to the electrochemical dynamics inside the battery, the accurate SOC/SOH estimation of the battery remains as challenging work. The SOC/SOH estimation methods are divided into two ...





Contact Us

For catalog requests, pricing, or partnerships, please visit:

<https://iwap.com.pl>

Phone: +34 919 456 782

Email: info@iwap.com.pl

Scan the QR code to access our WhatsApp.

