



What is the normal current of the base station power supply



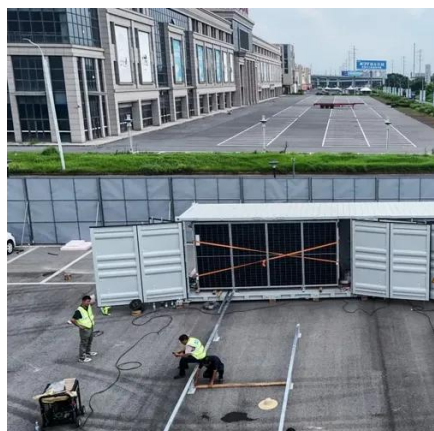


Overview

Communication base stations use -48V power supply for most historical reasons. -48V is also known as positive ground. As a result, a variety of state-of-the-art power supplies are required to power 5G base station components. Modern FPGAs and processors are built using advanced nanometer processes because they often perform calculations at fast speeds using low voltages ($<0.9\text{ V}$) at high current from compact. The 5G transmission is moving toward millimeter wave (mmWave) spectrum spanning up to 71 GHz to achieve the speeds that differentiates it from 4G. ----- "Information is power. Synchronous buck converters powered off of the +12V nds on base station (BS) power n of primary and secondary power supplies ters need power. Solar power generation is the use of photovoltaic panels to convert solar energy into electrical energy -48V DC, and then stabilize the load power supply through photovoltaic MPPT modules while charging the battery.



What is the normal current of the base station power supply



The power supply design considerations for 5G base stations

During quiescent periods--typically 5 ms to 100 ms--the PSU must minimize all load power with the basic functions of the antenna unit remaining active. It also must be able to ramp up to full ...

Telecommunication base station system working principle and system

In communication power supplies, also known as switch rectifiers, they generally provide DC power with a voltage of -48V. After distribution, a voltage of -48VDC can be obtained.



Base load and Peak Load on Power Station:

The unvarying load which occurs almost the whole day on the station is known as base load. Referring to the load curve of Fig. 3.13, it is clear that 20 MW of load has to be supplied by the station at all ...

Base Station Power Recommendations

Is it typically acceptable to use a basic wall outlet for most power supplies, I'm thinking around 35 amps at the most for the supply. Is it a better idea to have a dedicated circuit for a supply ...



[Selecting the Right Supplies for Powering 5G Base Stations ...](#)

Consequently, a company like ADI, which specializes in all aspects of the base station RF chain and has thorough knowledge of power management tools required for powering these applications, is able to ...



[Why does the communication base station use -48V power supply?](#)

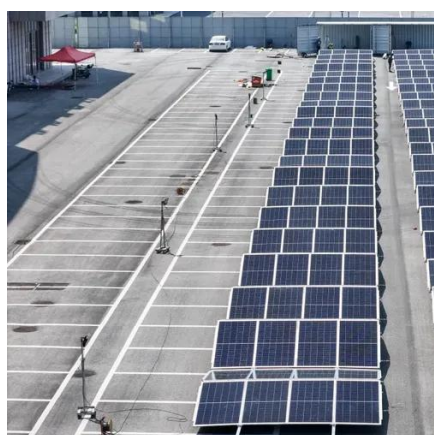
Because the smallest communications network and communications engineering are in the telephone network, the telecom bureau power supply voltage are 48V.



 LFP 48V 100Ah

Power Base Station

Maximum base station power is limited to 24 dBm output power for Local Area base stations and to 20 dBm for Home base stations, counting the power over all antennas (up to four).



[Base station power supply design standards](#)



A preferred power supply architecture for DSL applications is illustrated in Fig. 2. A push-pull converter is used to convert the 48V input voltage to +/-12V and to provide electrical isolation. Synchronous buck ...



[what kind of power supplies do you guys use for base station](#)

That radio should run from 11.73v to 15.87v but at 12v and 5 amps, you'll probably put too much demand on that little power supply. I use a switching power supply similar to this one. There are many options ...

[Selecting the Right Supplies for Powering 5G Base Stations](#)

As a result, a variety of state-of-the-art power supplies are required to power 5G base station components. Modern FPGAs and processors are built using advanced nanometer processes ...

ESS





Contact Us

For catalog requests, pricing, or partnerships, please visit:

<https://iwap.com.pl>

Phone: +34 919 456 782

Email: info@iwap.com.pl

Scan the QR code to access our WhatsApp.

