



# What is the maximum size of a photovoltaic panel





## Overview

---

72-cell or 96-cell panels maximize output per square foot. Often installed on flat roofs or open land with mounting systems. Lightweight and flexible models are ideal for curved or limited surfaces. A mix of standard and portable panels, depending on. Standard Residential Panels Optimize Space and Handling: The industry-standard 60-cell panel dimensions (65" × 39" × 1.5") aren't arbitrary - they represent the optimal balance between power output, installation ease, and roof space utilization. At 40-46 pounds, they can be safely handled by. There are 3 standardized sizes of solar panels, namely: 60-cell solar panels size. That's basically a 66×39 solar panel. These panels generally weigh more than 50 pounds and have a 6 x 12 grid. Know why these proven formats and their half-cut upgrades still rule the market - When people talk about a standard solar panel size, they usually mean the typical.



## What is the maximum size of a photovoltaic panel



### [Complete Guide to Photovoltaic Panel Sizes for Solar Systems](#)

Panel size should be considered in relation to power output, available space, and budget. One of the first things to consider is your energy demand. The total size of the solar system will depend on how much energy you ...

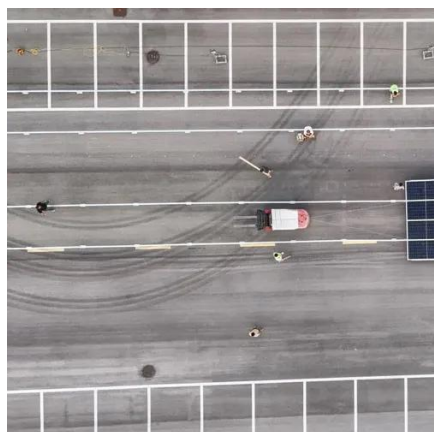
### Solar Panel Size: 2026 Detailed Guide

In this article, we will discuss all the important aspects of solar panel size. This guide will help you select the right solar panel size through detailed calculations.



### [Understanding Photovoltaic Panel Sizes - What You Need to Know ...](#)

In this detailed guide, we'll explain how solar panel dimensions correlate with wattage, the different size standards, and how to calculate the best fit for your energy goals.



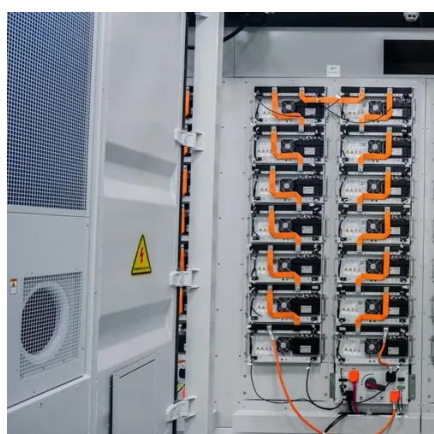
### [standard solar photovoltaic panel sizes explained](#)

For massive utility installations, panels can now exceed 8 feet in length and 4 feet in width, pushing wattages past 600W, entirely reshaping the concept of standard solar panel sizes in the large-scale ...



### [Understanding Solar Panel Dimensions In 2025: A Complete Size Guide](#)

Q1: What are the standard dimensions of a solar panel in 2025? A1: For homes, it's about 1.7m x 1.0m. For commercial projects, around 2.0m x 1.0m. Portable panels vary widely. Q2: Do bigger panels ...



### [Solar Panel Size & Dimensions Guide 2025 . Complete Specs](#)

In this comprehensive guide, you'll learn everything you need to know about solar panel sizing, from standard dimensions to weight considerations, helping you determine the perfect solar solution for your ...



### [Solar Panel Size Guide , Best Panel Size for Your Roof](#)

Solar cells are assembled in grids, and the most common configurations are 60-cell panels for residential use and 72-cell panels for commercial or utility use. A 60-cell panel (often seen on home rooftops) ...



### [Standard Solar Panel Sizes And Wattages \(100W-500W Dimensions\)](#)



For that, you will need to know what size is a typical 100-watt solar panel, right? To bridge that gap of very useful knowledge needed, we have compared and averaged the sizes of 100-watt to 500-watt solar panels ...



### [Solar Panel Sizes \(Energy Use & Dimensions Guide\)](#)

Solar panels are available in a wide range of sizes, types, and total wattage. The standard solar panel size measures an average of 5.4 by 3.25 feet or 65 by 39 inches. This can cover up to 15 square feet ...

### [Solar Panel Dimensions: Sizes and What You Need to Know](#)

Solar panels exist in different dimensions, depending on their manufacturing stage and operational efficiency, as well as the company producing them. The main solar panel groups found in use ...





## Contact Us

---

For catalog requests, pricing, or partnerships, please visit:

<https://iwap.com.pl>

Phone: +34 919 456 782

Email: [info@iwap.com.pl](mailto:info@iwap.com.pl)

Scan the QR code to access our WhatsApp.

