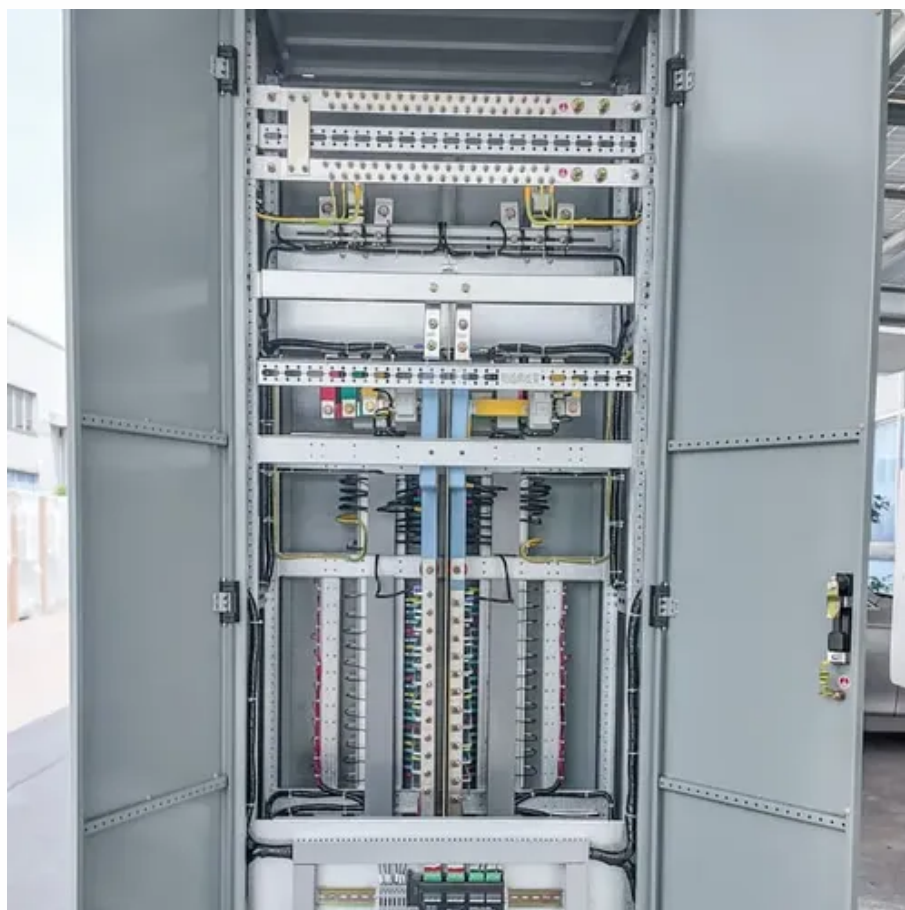




# What is a single-phase low voltage pwm inverter





## Overview

---

A Single Phase PWM Inverter is an electrical device that converts DC (Direct Current) to AC (Alternating Current) by employing pulse width modulation (PWM) techniques to efficiently regulate the output voltage and frequency. It generates a series of pulses with varying widths to create an AC waveform that closely approximates a sine wave. This. A voltage-fed inverter (VFI) or more generally a voltage-source inverter (VSI) is one in which the dc source has small or negligible impedance. The voltage at the input terminals is constant. controlled turn-on and turn-off. These cleverly designed procedures take into. CHAPTER 2 SINGLE PHASE PULSE WIDTH MODULATED INVERTERS 2.



## What is a single-phase low voltage pwm inverter



### [Unipolar PWM Single Phase Inverter with RL Load](#)

Unipolar PWM is particularly suitable for voltage source applications, where the DC voltage source remains constant. The unipolar nature of the control scheme simplifies the design and control of the ...

### [AN-CM-270 Design and Implementation of a Single Phase ...](#)

There are different control methodologies that can be used to implement a single-phase inverter. One such control strategy includes a PWM-based square wave for the single-phase inverter.



### [About Single Phase PWM Inverter , New Topic](#)

A Single Phase PWM Inverter is an electrical device that ...

## CHAPTER 2

A standard single-phase voltage or current source inverter can be in the half- bridge or full-bridge configuration. The single-phase units can be joined to have three-phase or multiphase topologies. ...



### [Demystifying PWM Techniques in Single-Phase Full Bridge Inverters](#)

In this article, I will take you on a journey through the essential role of PWM in single-phase full-bridge inverters, explore different PWM techniques, and share real MATLAB simulation



### [Single PWM Inverters , DC-TO-AC INVERTER , Electronics Tutorial](#)

There are three basic configurations of single phase square wave inverters are centre - tapped load, centre -tapped supply and bridge configuration. By sequentially switching them on and off, the ...



### [What is a PWM Inverter: Types and Applications](#)

Single-phase PWM inverters consist of two main parts, the DC power source and the inverter bridge, typically use a full-bridge configuration consisting of four power switches, usually ...

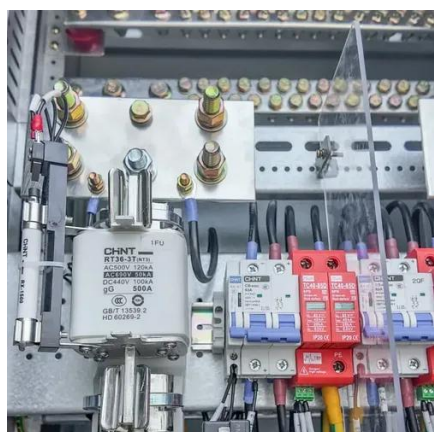


**1075KWHH ESS**

### [Design and Implementation of a Single-phase Inverter with ...](#)



In this paper, a single-phase inverter with the technology of sinusoidal pulse width modulation (SPWM) is proposed. The single-phase inverter fabricated using low-cost components is designed and ...



### Pulse Width Modulation (PWM) Techniques

The common PWM methods, as well as their impacts on inverter performance, harmonic content, and distortion, are covered in single-phase inverters and three-phase inverters in the section below.



114KWh ESS



ISO 15001 ISO 14001 PICC RoHS CE MSDS UN38.3 UK CA IEC

### [About Single Phase PWM Inverter , New Topic](#)

A Single Phase PWM Inverter is an electrical device that converts DC (Direct Current) to AC (Alternating Current) by employing pulse width modulation (PWM) techniques to efficiently ...



### [Single-Phase PWM Inverters: Introduction & Control](#)

In this chapter single-phase inverters and their operating principles are analyzed in detail. The concept of Pulse Width Modulation (PWM) for inverters is described with analyses extended to different kinds ...



## Contact Us

---

For catalog requests, pricing, or partnerships, please visit:

<https://iwap.com.pl>

Phone: +34 919 456 782

Email: [info@iwap.com.pl](mailto:info@iwap.com.pl)

Scan the QR code to access our WhatsApp.

