



What does pmw mean for photovoltaic panels





Overview

PWM (Pulse Width Modulation) solar charge controllers are electronic devices used in solar energy systems to protect the battery., it controls the current flowing from the solar panel to the. What is PWM Solar Charge Controller and Why You Need One?

If you're harnessing the power of the sun to meet your energy needs, a solar charge controller is an essential part of your system.



What does pmw mean for photovoltaic panels



[PWM Solar Charge Controller - Working, Sizing and Selection](#)

What is Pulse Width Modulation Or A PWM Charge Controller? A PWM (Pulse Width Modulation) controller is an (electronic) transition between the solar panels and the batteries:

[What is PWM Solar Charge Controller and Why You Need One?](#)

Among the most widely used types are Pulse Width Modulation (PWM) solar charge controllers, known for their affordability, simplicity, and effectiveness. But how do they work? What ...



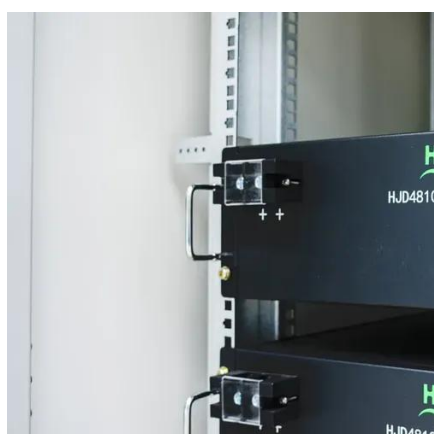
[What are Solar Panel PWM Charge Controllers: Everything You Need ...](#)

PWM charge controllers are one of the main types of solar panel charge controllers. They play a crucial role in regulating and managing the flow of electricity from the solar panels to the ...



[PWM Solar Charge Controller - Working, Sizing and Selection](#)

Among the most widely used types are Pulse Width Modulation (PWM) solar charge controllers, known for their affordability, simplicity, and effectiveness. But how do they ...



[MPPT vs PWM - The Difference Explained \(With Diagrams\)](#)

PWM (Pulse Width Modulation) charge controllers are essentially simple switching interfaces between the solar panels and the batteries. They work by switching the power generated ...

[What's a PWM Solar Charge Controller? A Guide on How They ...](#)

A PWM solar charge controller, also known as a Pulse Width Modulation controller, is an electronic device that regulates the flow of electricity from solar panels to batteries. It protects ...



[UNDERSTANDING SOLAR CHARGE CONTROLLERS: PWM VS.](#)

Solar charge controllers are a crucial component in off-grid solar systems, regulating the power flow from solar panels to batteries to prevent overcharging and optimize performance. Two ...



What Is PWM Solar Charge Controller?



A Pulse Width Modulation (PWM) solar charge controller is a device used in solar energy systems to manage the electric current flowing from the solar panels to the batteries.

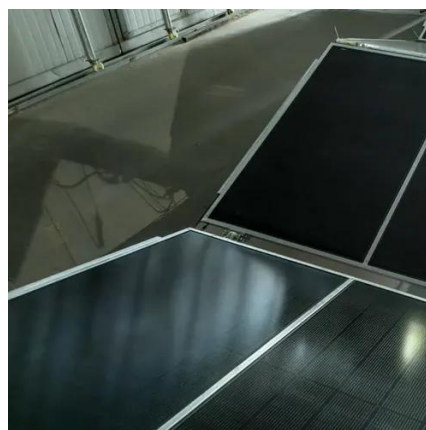


[PWM solar charge controllers: A quick and thorough explanation](#)

PWM (Pulse Width Modulation) solar charge controllers are electronic devices used in solar energy systems to protect the battery. These devices connect the solar panels to the battery to ...

What is PWM Charge Controller?

An important yet unnoticed component is responsible for keeping a balanced voltage between the solar panels and batteries. It is PWM charge controller that optimizes energy transfer ...



[Pulse Width Modulation \(PWM\) Controller: Definition and How it ...](#)

Pulse Width Modulation (PWM) solar charge controller works by gradually decreasing the amount of power going into the battery as it nears full charge. This helps to prevent overcharging and ...





Contact Us

For catalog requests, pricing, or partnerships, please visit:

<https://iwap.com.pl>

Phone: +34 919 456 782

Email: info@iwap.com.pl

Scan the QR code to access our WhatsApp.

