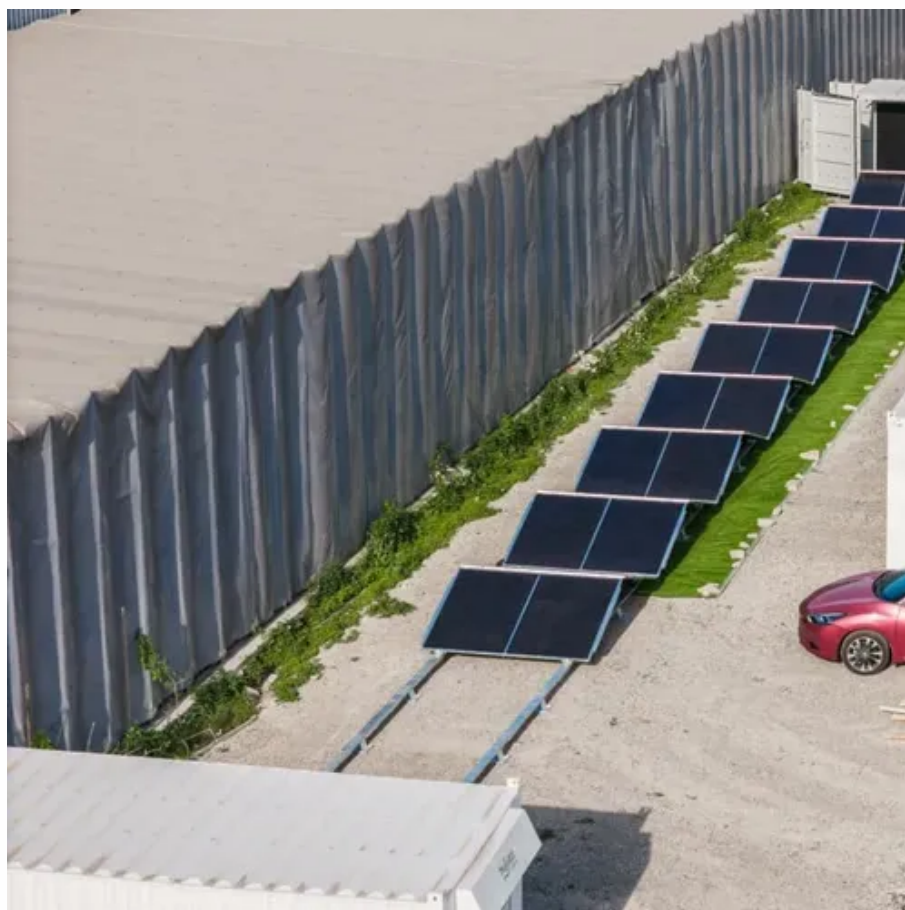




What communication equipment is inside the base station





Overview

In the area of wireless computer networking, a base station is a radio receiver/transmitter that serves as the hub of the local wireless network, and may also be the gateway between a wired network and the wireless network. It typically consists of a low-power transmitter and .



What communication equipment is inside the base station



Base Stations

The present-day tele-space is incomplete without the base stations as these constitute an important part of the modern-day scheme of wireless communications. They are referred to as cell ...

[What Are Base Station Antennas? Complete Guide](#)

Base station antennas play a fundamental role in wireless communication systems by enabling the signal transmission and receive between the base stations and mobile devices.



[What is a Base Station in Telecommunications?](#)

A base station is a critical component in a telecommunications network. A fixed transceiver that acts as the central communication hub for one or more wireless mobile client devices.

Base station

OverviewComputer networkingLand surveyingWireless communicationsSee also

In the area of wireless computer networking, a base station is a radio receiver/transmitter that serves as the hub of the local wireless network, and may also be the gateway between a wired



network and the wireless network. It typically consists of a low-power transmitter and wireless router.



[Complete Guide to 5G Base Station Construction, Key Steps, Equipment](#)

Key for connecting base stations into a network, this system ensures smooth communication. It becomes a top priority during power outages to maintain data flow. Outdoor base ...

[1. What Is a Base Station and What Are Its Core Components?](#)

BBU (baseband unit) and RRU (remote radio unit)
Power system and backup battery system.
Cooling, monitoring, lightning protection, and other infrastructure. Indoor shelter or outdoor ...



[Understand Cellphone Basestation Technology » Electronics Notes](#)

The base station is the most visible element of a mobile or cellular telecommunications network. These cell phone base stations can take many formats, but they are characterised by the antennas on ...

[What are Base Station in Telecommunications?](#)



Base stations contain several key parts. The antenna sends and receives radio energy. The transceiver handles signal modulation. The baseband processor converts signals to digital form. ...



[What is a Base Station? -- From Communication Core to Thermal ...](#)

Simply put, a base station (BS) is a wireless transceiver device in a mobile communication network that provides wireless coverage and communicates with mobile terminals ...

[What Is a Base Station? Definition and How It Works](#)

The internal components of a base station include an antenna system, transceiver units, and control equipment. Antennas are mounted at height to ensure adequate coverage.





Contact Us

For catalog requests, pricing, or partnerships, please visit:

<https://iwap.com.pl>

Phone: +34 919 456 782

Email: info@iwap.com.pl

Scan the QR code to access our WhatsApp.

