



What are the thick lines on the photovoltaic panel surface





What are the thick lines on the photovoltaic panel surface



[The thick white line in the middle of the photovoltaic panel](#)

Crystalline photovoltaic panels are made by gluing several solar cells (typically 1.5 W each) onto a plate, as can be seen in Figure 1, and connecting them in series and parallel until ...

[Material properties and thickness of each layer of PV Panel \[15\].](#)

The simulation results indicate that PV panel temperature lowered with solar radiation values lower in January, and the temperature was homogeneous on the PV panel surface.



[Thickness of solar photovoltaic panel components](#)

What are photovoltaic cells? Photovoltaic cells are the most critical part of the solar panel structure of a solar system. These are semiconductor devices capable of generating a DC electrical current from ...



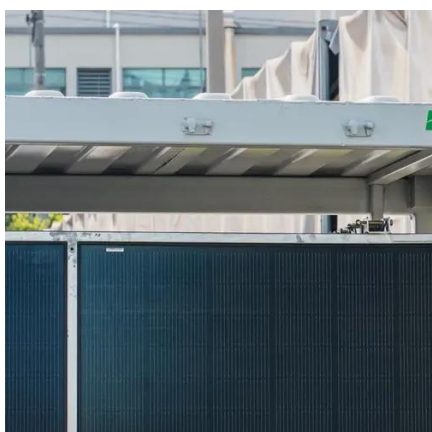
Structure and Materials of PV Modules

Structure and Materials of PV Modules A crystalline silicon module must withstand various influences in order to remain functional for 25 years or even longer.



Solar Photovoltaic Cell Basics

There are a variety of different semiconductor materials used in solar photovoltaic cells. Learn more about the most commonly-used materials.



[How to read solar panel grid lines , NenPower](#)

Solar panel grid lines are the visual lines present across the surface of solar panels, marking the layout of photovoltaic cells. They guide the installation and adjustment of panels to ...



[Why Do Photovoltaic Panels Have Grid Lines? , IWS](#)

From a distance, photovoltaic panels appear to be solid black or blue. Get up closer, though, and you can see that solar modules have a pattern of white lines.



The structure of a photovoltaic module



Core Components of a Photovoltaic Module The fundamental structure of PV panel components follows a layered approach. At the center are the photovoltaic solar cells--typically ...



What Are The Grid Lines On Solar Panels For?

The grid lines are essential for the panels to generate usable electricity, and without them, your panel would be little more than a glorified sunlight absorber.

Why Do Photovoltaic Panels Have Grid Lines? , IWS

There are a variety of different semiconductor materials used in solar photovoltaic cells. Learn more about the most commonly-used materials.



What is the thick line on the front of the solar panel?

The thick line on the front of a solar panel, often referred to as the busbar, serves a crucial role in the collection and distribution of electrical current generated by the photovoltaic cells.



Contact Us

For catalog requests, pricing, or partnerships, please visit:

<https://iwap.com.pl>

Phone: +34 919 456 782

Email: info@iwap.com.pl

Scan the QR code to access our WhatsApp.

