



# What are the specifications of solar panels on residential roofs





## Overview

---

This article will guide you through what your roof needs for solar panels. We'll examine roof orientation, pitch, load capacity, material, and ventilation. Roof Load Capacity is Rarely a Limiting Factor: Solar panels add only 3-4 pounds per square foot to roof load, well within the 20+ pound capacity of most residential roofs. The real constraints are typically usable roof space after accounting for required 3-foot setbacks and obstruction clearances. The Renewable Energy Ready Home (RERH) specifications were developed by the U.



## What are the specifications of solar panels on residential roofs



### [Rooftop Solar Panel Size and Layout Guide](#)

Standard modules: Typically range from 400-550W, with relatively compact dimensions. They are suitable for residential or small to medium rooftops, offering flexible installation and ...

### [Solar Panel Roof Requirements: What You Need to Know](#)

Discover essential roof requirements for solar panels. Learn about pitch, load capacity, and materials to ensure your home is ready for a solar energy system.



### [Solar Roof Design and Construction Guide](#)

Solar Roof is a building-integrated photovoltaic (BIPV) system that incorporates photovoltaic (PV) tiles as roof coverings to generate on-site electricity for the building. Solar Roof utilizes visually ...



### [Solar Panel Size & Dimensions Guide 2025. Complete Specs](#)

Complete guide to solar panel sizes and dimensions. Compare 60-cell vs 72-cell panels, weights, roof space requirements, and installation specs for 2025.

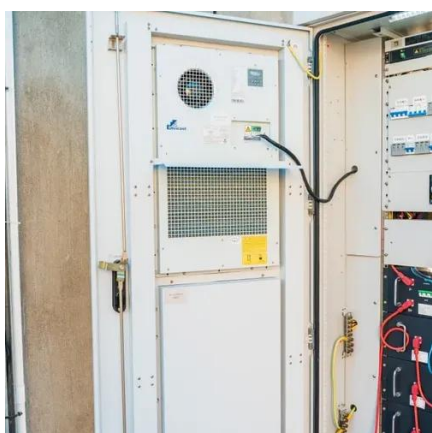


### [Solar Photovoltaic: SPECIFICATION, CHECKLIST AND GUIDE](#)

The RERH specifications and checklists take a builder and a project design team through the steps of assessing a home's solar resource potential and defining the minimum structural and system ...

### [Photovoltaic Roof Panel Specifications and Dimensions: A Complete ...](#)

A: Most residential panels measure approximately 65x39 inches. Q: Can panel weight damage my roof? A: Properly installed systems distribute weight evenly. Ensure your roof can handle 3-4 lbs/sq. ft. ...



### [How to Determine the Right Roof Solar Panel Size for Your Home](#)

Generally, you'll discover modules that vary in sizes from 60 to 72 cells, each affecting how much power they can generate. For residential use, the standard dimensions for a 60-cell unit ...

### [Perfect Solar Panel Sizes for Your Home \(Expert Sizing Guide\)](#)



Solar panels have become the cornerstone of residential clean energy, with standard sizes designed to balance power output and installation practicality. Most residential solar panels ...



### [Solar Photovoltaic: SPECIFICATION, CHECKLIST AND ...](#)

Discover essential roof requirements for solar panels. Learn about pitch, load capacity, and materials to ensure your home is ready for ...

### [Solar Panel Size Guide , Best Panel Size for Your Roof](#)

Solar cells are assembled in grids, and the most common configurations are 60-cell panels for residential use and 72-cell panels for commercial or utility use. A 60-cell panel (often seen on ...



### [2025 Solar Panel Specs Guide: Choose the Best Panels](#)

Understanding solar panel specs is the key to picking a system that fits your home, budget, and climate. We've split the 18 parameters into two groups: Core Parameters for everyday users and Advanced ...





## Contact Us

---

For catalog requests, pricing, or partnerships, please visit:

<https://iwap.com.pl>

Phone: +34 919 456 782

Email: [info@iwap.com.pl](mailto:info@iwap.com.pl)

Scan the QR code to access our WhatsApp.

