



What are the flywheel energy storages for Bangkok communication base stations





Overview

Flywheel energy storage systems provide a resilient and efficient solution for high-frequency, rapid-response energy applications. Unlike batteries, flywheels utilize kinetic inertia to store energy, delivering instantaneous power dispatch without performance degradation over time. When energy is extracted from the system, the flywheel's rotational speed is reduced as a consequence of the principle of conservation of energy; adding energy to the. Flywheel Energy Storage Systems (FESS) rely on a mechanical working principle: An electric motor is used to spin a rotor of high inertia up to 20,000-50,000 rpm. Energy storage is a vital component of any power system. With the rise of new energy power generation, various energy storage methods have emerged, such as lithium battery energy storage, flywheel energy storage (FESS), supercapacitor, superconducting magne.



What are the flywheel energy storages for Bangkok communication b

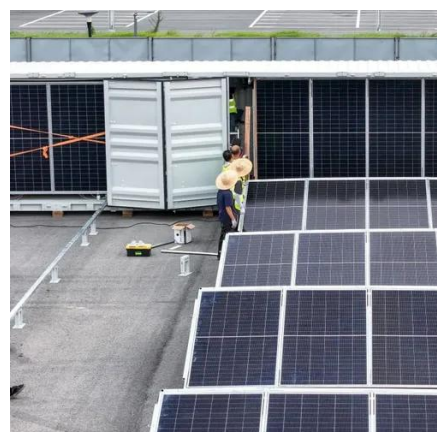


[How to develop flywheel energy storage for communication ...](#)

Flywheel energy storage is an efficient, environmentally friendly and sustainable solution to handle short power disturbances at base stations. This Master of Science thesis, in collaboration with

[Flywheel Energy Storage Systems and their Applications: A Review](#)

Flywheel energy storage systems have gained increased popularity as a method of environmentally friendly energy storage. Fly wheels store energy in mechanical rotational energy to be then ...



Flywheel energy storage

Overview
Main components
Physical characteristics
Applications
Comparison to electric batteries
See also
Further reading
External links

A typical system consists of a flywheel supported by rolling-element bearing connected to a motor-generator. The flywheel and sometimes motor-generator may be enclosed in a vacuum chamber to reduce friction and energy loss. First-generation flywheel energy-storage systems use a large steel flywheel rotating on mechanical bearings. Newer systems use carbon-fiber composite rotors

[Exploring Flywheel Energy Storage Systems and Their Future](#)

In this section, we will look closely at the



comparative analysis of flywheel energy storage systems (FESS) alongside alternative storage solutions, particularly battery storage and pumped hydro storage.



Flywheel energy storage

First-generation flywheel energy-storage systems use a large steel flywheel rotating on mechanical bearings. Newer systems use carbon-fiber composite rotors that have a higher tensile strength than ...

[What is the role of flywheel energy storage in government ...](#)

Mar 1, 2017 · Flywheel Energy Storage System (FESS) is an electromechanical energy storage system which can exchange electrical power with the electric network.



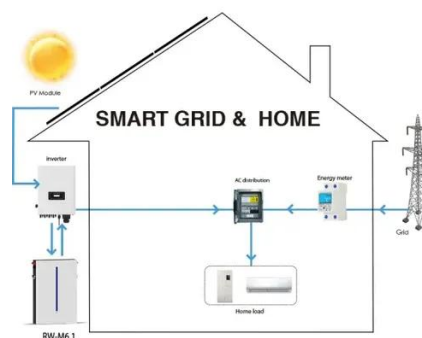
[A Review of Flywheel Energy Storage System Technologies](#)

This article comprehensively reviews the key components of FESSs, including flywheel rotors, motor types, bearing support technologies, and power electronic converter technologies. It ...

[A review of flywheel energy storage systems: state of the art and](#)



Thanks to the unique advantages such as long life cycles, high power density, minimal environmental impact, and high power quality such as fast response and voltage stability, the ...



Flywheel Energy Storage - Naseem Bukhari

Flywheel energy storage systems provide a resilient and efficient solution for high-frequency, rapid-response energy applications. Unlike batteries, flywheels utilize kinetic inertia to store energy, ...

Technology: Flywheel Energy Storage

The system consists of a 40-foot container with 28 flywheel storage units, electronics enclosure, 750 V DC-circuitry, cooling, and a vacuum system. Costs for grid inverter, energy management system, ...





Contact Us

For catalog requests, pricing, or partnerships, please visit:

<https://iwap.com.pl>

Phone: +34 919 456 782

Email: info@iwap.com.pl

Scan the QR code to access our WhatsApp.

