



Westinghouse ifr14500 specs





Overview

Specifications Chemistry: Lithium Iron Phosphate Voltage: 3.2 Capacity: 500mAh Size: 14500 (same height & diameter of AA) Packaging Dimensions: 3.18 LBS UPC: 889554008010. The Westinghouse Lithium-iron phosphate batteries are specially designed and tested to provide the best possible performance for outdoor solar-powered lighting. The battery offers a longer life cycle, and its wide operating temperature range provides an. Please check the dimensions of your battery before purchasing: This is not a 4/5 AA (14430) size battery and will not fit in place of 4/5 AA (14430) rechargeable batteries, this is a AA size battery that is included- 8x Westinghouse AA 5000mAh 3. Battery Cell Performance Criteria 4. That technology was the basis for the global electrical network the world.



Westinghouse ifr14500 specs

[14500 Rechargeable Batteries IFR14500 4 pack Westinghouse ...](#)



The Westinghouse Lithium-iron phosphate batteries are specially designed and tested to provide the best possible performance for outdoor solar-powered lighting. The battery offers a long lifespan and ...

[Westinghouse IFR 14500 3.2V Lithium Iron Phosphate LiFePO4 Solar ...](#)

The Westinghouse IFR Lithium-Iron Phosphate Rechargeable Batteries provide high-quality green energy with excellent performance. Specifications. Applications Primarily Solar Lighting Solar ...



[Westinghouse 14500 3.2V LiFePO4 Lithium Iron Phosphate ...](#)

[SPECIFICATIONS] - 3.2 volt, 500mAh, Lithium-Iron Phosphate LiFePO4, Height:1.995in, Diameter:0.542in [GREEN ENERGY] - Energy efficient and environmentally friendly.

Specification Approval Sheet

Battery Cell Drawing (all unit in mm, not in scale) . This document describes the Product Specification of the Lithium-ion rechargeable battery cell supplied by O'CELL (O'cell Technology CO., LTD).
4. ...



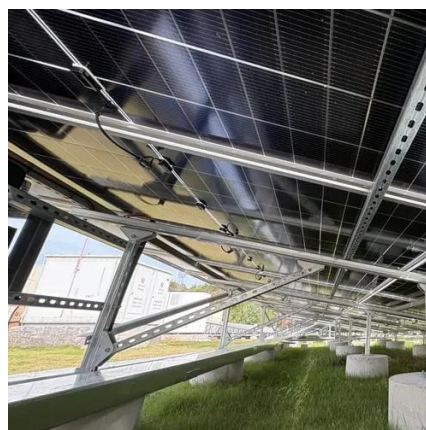
[Westinghouse IFR14500 Lithium Iron Phosphate 3.2V ...](#)

Westinghouse IFR14500 Lithium Iron Phosphate 3.2V 500mAh Rechargeable ...



IFR14500EC Datasheet

All specifications are correct at time of creation. All specifications and operation conditions contained in this datasheet are subject to change or improvement without prior notice to the user.



[Westinghouse IFR14500 Lithium Iron Phosphate Rechargeable Battery](#)

Specifications Chemistry: Lithium Iron Phosphate Voltage: 3.2 Capacity: 500mAh Size: 14500 (same height & diameter of AA) Packaging Dimensions: 3.54" x 4.63" x 0.56" (W x H x D) Packaging ...



[Lithium-iron Phosphate Battery - IFR14500](#)



The Westinghouse Lithium-iron phosphate batteries are specially designed and ...



[Lithium-iron Phosphate Battery - IFR14500](#)

The Westinghouse Lithium-iron phosphate batteries are specially designed and tested to provide the best possible performance for outdoor solar-powered lighting. The battery offers a long lifespan and ...



[Westinghouse IFR14500 Lithium Iron Phosphate 3.2V 500mAh ...](#)

Westinghouse IFR14500 Lithium Iron Phosphate 3.2V 500mAh Rechargeable Battery Blister Pack of 4 - For Solar Lights. Lithium-Iron Phosphate Batteries are perfect fit for outdoor solar powered equipment.



[Westinghouse 3.2V IFR14500 500mAh LiFEp04 Batteries \(4 Pack\)](#)

Product Home Westinghouse Westinghouse 3.2V IFR14500 500mAh LiFEp04 Batteries (4 Pack)





Contact Us

For catalog requests, pricing, or partnerships, please visit:

<https://iwap.com.pl>

Phone: +34 919 456 782

Email: info@iwap.com.pl

Scan the QR code to access our WhatsApp.

