



Washington d c electricity consumption





Overview

The latest data from 2025 indicates that the total electricity consumption stands at approximately 16,147 kWh per person. This figure shows a significant reduction of around 3,762 kWh per person compared to the historical peak in 2011 when consumption was at 19,910 kWh per person. Energy Information Administration, Form EIA-860, Annual Electric Generator Report, U. * Data is based on 12. The energy consumption landscape of the District of Columbia is characterized by its heavy reliance on external sources, with 98% of its electricity coming from power plants in neighboring states. due to its small population and. for many residents of Washington, DC. A 2021 study showed that low-income households with income at or below 60 percent State Median Income (SMI) in the DC metro area faced a 4. A high energy burden is considered to be above 6%, and severe energy burden above 10%.



Washington d c electricity consumption



[District of Columbia's energy consumption](#)

Despite having one of the lowest energy consumption rates in the U.S. due to its small population and limited industry, DC consumes sixty times more energy than it produces.

District of Columbia Energy details

District of Columbia's Key Energy Data: Average electricity prices for the last decade, electricity generation mix and more.



[Washington, DC Electricity Generation Summary](#)

View all available electricity data in Washington, DC. View monthly electricity generation, the breakdown by power source, details on the 23 power plants in Washington, DC, and more.

[Compare Washington D.C. Electricity Rates \(2026\) . EnergySage](#)

As of January 2026, the cost of electricity in Washington D.C. is 13 ¢/kilowatt-hour (kWh)--roughly 35% lower than the national average cost. That number is based on real-world electric bills shared with ...



Utility Data Tracking , dgs

The capture, analysis, and dissemination of data related to utility use in properties owned and leased by the District of Columbia is a critical component of DGS-SE's energy conservation and cost reduction ...



ENERGY BURDENS IN WASHINGTON, DC

A quarter of low-income households have an energy burden above 14% in the Washington, DC metropolitan area, which is more than seven times higher than the median energy burden.



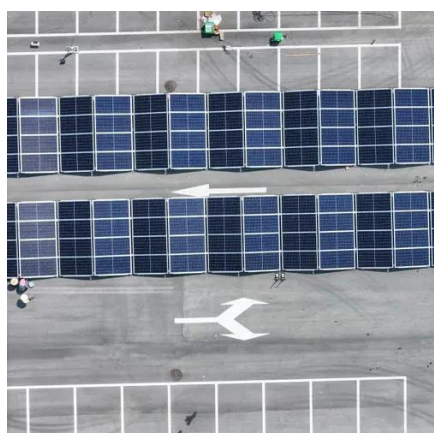
Standard 20ft containers



Standard 40ft containers

[Building Energy Benchmarking , Open Data DC](#)

Tracking buildings' energy and water use.



[District of Columbia Electricity Profile 2024](#)



[Washington, D.C. Electricity Generation Mix 2025 .
Low-Carbon ...](#)

As for the progression of electricity consumption in Washington, D.C., there appears to be a decline rather than growth. The latest data from 2025 indicates that the total electricity consumption stands ...

Energy Affordability in Washington, DC

customers struggling with energy bills. Synapse Energy Economics, Inc. (Synapse) found that multiple states are reporting on affordability for low-income and moderate-income customers, although it is ...





Contact Us

For catalog requests, pricing, or partnerships, please visit:

<https://iwap.com.pl>

Phone: +34 919 456 782

Email: info@iwap.com.pl

Scan the QR code to access our WhatsApp.

