



# Verticality inspection of flow batteries in communication base stations





## Overview

---

This work studies the optimization of battery resource configurations to cope with the duration uncertainty of base station interruption. We mainly consider the demand transfer and sleep mechanism of the base station and establish a two-stage stochastic programming model to minimize battery. The objective of the IoT4verticality product/service is to fill the gap left uncovered by traditional inspection procedures, based on site inspections performed on time-based criteria, which periodically assess the integrity of target structures. There are a number of different tests like: visual inspections, specific gravity, float voltage and current measurements, discharge test, individual cell condition. Compatibility and Installation Voltage Compatibility: 48V is the standard voltage for telecom base stations, so the battery pack's output voltage must align with base station equipment requirements. Modular Design: A modular structure simplifies installation, maintenance, and scalability.



## Verticality inspection of flow batteries in communication base station

---



### [Super communication base station flow battery construction ...](#)

In the communication power supply field, base station interruptions may occur due to sudden natural disasters or unstable power supplies. This work studies the optimization of

### **IoT4Verticality , ESA Space Solutions**

The proposed solution aims at replacing these periodical inspection campaigns with a permanent monitoring of the infrastructures' vertical condition. The solution also enables alarming functionalities, ...



### [102 2015 ITP 26 Verticality of Towers . PDF](#)

1) The document is an inspection test program for measuring the verticality of ...

### [Optimization of Communication Base Station Battery Configuration](#)

In the communication power supply field, base station interruptions may occur due to sudden natural disasters or unstable power supplies. This work studies the optimization of battery ...



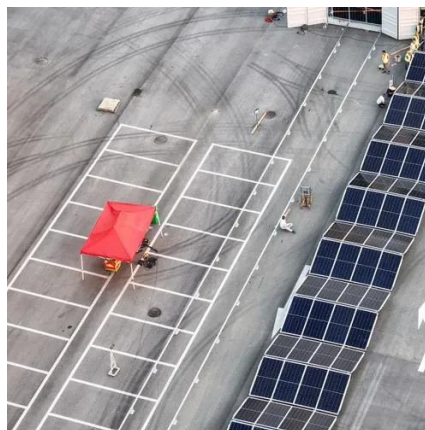
[\(PDF\) Dispatching strategy of base station backup power supply](#)

Overall, this study provides a clear approach to assess the environmental impact of the 5G base station and will promote the green development of mobile communication facilities.



[102 2015 ITP 26 Verticality of Towers . PDF](#)

1) The document is an inspection test program for measuring the verticality of towers for a 132/33 kV grid station construction project in Sinaw and Samad. 2) It outlines the acceptance criteria for maximum ...



[A flow battery cell testing facility for versatile active material](#)

This paper firstly presents a detailed description of a new experimental testing facility for Flow Batteries: FB-Cell Testing Facility (FB-CTF) which was recently put into operation at the ...



[Battery Discharge Testing: Implementing NERC Standards and](#)



Periodic testing and maintenance of battery banks is imperative to ensure reliable delivery of power when they are called upon.



## 2686-2024

A comprehensive list of best practices around the design and integration of battery management systems that protect the safety and longevity of batteries in energy storage applications is developed ...

### [Requirements for flow batteries for communication base stations](#)

In this article, the schedulable capacity of the battery at each time is determined according to the dynamic communication flow, and the scheduling strategy of the standby power considering the ...



### [IEEE Recommended Practice for Maintenance, Testing, and ...](#)

This recommended practice is applicable to full-floatstandby service stationary applications where a battery charger normally maintains the battery fully charged and provides the dc loads.



## Contact Us

---

For catalog requests, pricing, or partnerships, please visit:

<https://iwap.com.pl>

Phone: +34 919 456 782

Email: [info@iwap.com.pl](mailto:info@iwap.com.pl)

Scan the QR code to access our WhatsApp.

