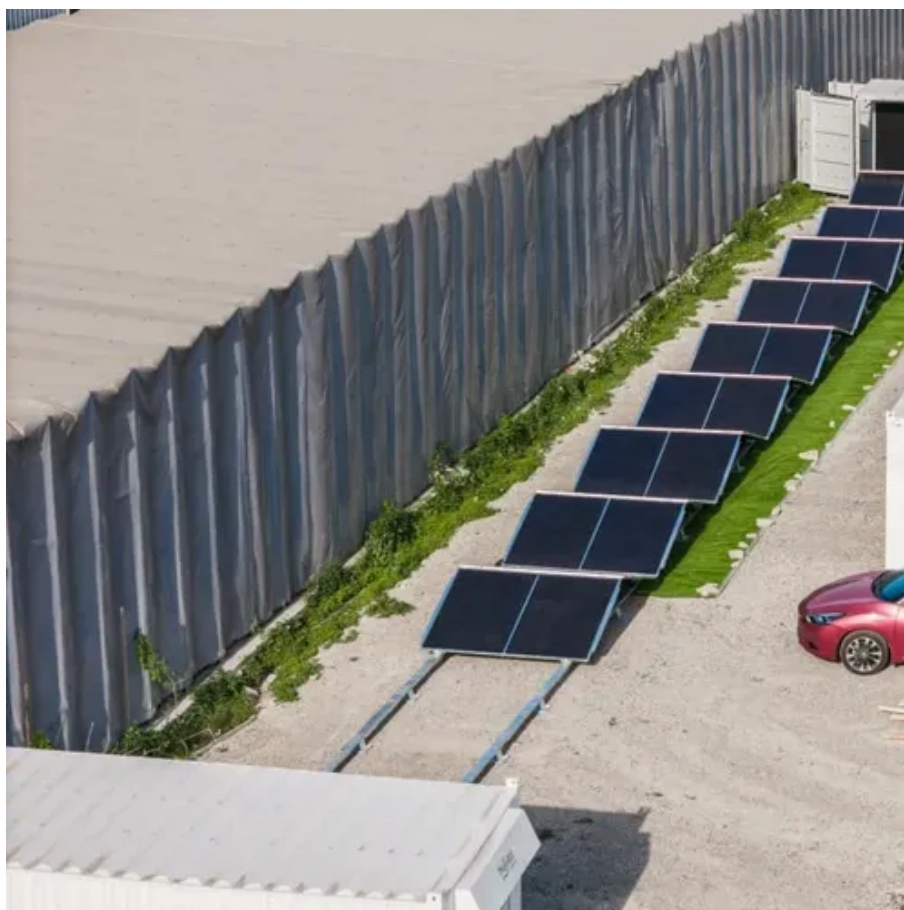




Using two lithium battery packs in parallel





Using two lithium battery packs in parallel



[How to Connect Two Lithium Battery Packs in Parallel: A Step-by-Step](#)

Proper parallel connection of lithium batteries requires attention to voltage matching, cable sizing, and monitoring system integration. When implemented correctly, this configuration significantly enhances ...

[How to Charge Two Batteries in Parallel: A ...](#)

Learn how to charge two batteries in parallel safely and effectively. Follow these steps for optimal performance and battery longevity.



[How to Safely Charge Lithium Batteries in Parallel](#)

Learn safe and efficient parallel battery charging for lithium packs. Avoid overheating, imbalance, and risks with proper tools and best practices.

[Can You Mix Different Capacity Lithium Batteries?](#)

A comprehensive guide to mixing different capacity lithium batteries. Dive into the crucial aspects of voltage, BMS, fuses, and more.



How to Put 2 Battery Packs Together?

In this comprehensive guide, I'll explain step-by-step how to properly connect two battery packs in series or parallel to create a safe, higher-performance battery bank for your application.

[How to Charge Two Batteries in Parallel: Step-by-Step](#)

In this article, we'll guide you on charging two batteries in parallel, explain key considerations and safety tips when batteries in parallel charging.



[A Complete Guide to Parallel Connection of Lithium Ion Batteries](#)

You can connect lithium batteries in a parallel connection to achieve greater capacity. The voltage will remain constant. Always ensure that your batteries have the same voltage and ...



[How to Connect Two Batteries in Parallel?](#)



When you connect two batteries in parallel, their capacities add up. For example, two 2000mAh batteries will give you a total capacity of 4000mAh. This means your device will run longer ...



[Can You Safely Connect Two Lithium Batteries in Parallel?](#)

Yes, you can connect two lithium batteries in parallel to increase capacity while maintaining voltage. Ensure both batteries have identical voltage, capacity, and state of charge to prevent imbalances. ...

[How to Efficiently Charge Multiple LiPo Batteries: Parallel Charging](#)

Why this works: Parallel charging lets packs of the same cell count share the same constant-current/constant-voltage (CC/CV) charge profile, while your balance charger manages cell ...





Contact Us

For catalog requests, pricing, or partnerships, please visit:

<https://iwap.com.pl>

Phone: +34 919 456 782

Email: info@iwap.com.pl

Scan the QR code to access our WhatsApp.

