



# Ups efficiency formula





## Overview

---

The formula to determine UPS efficiency is straightforward:  $\text{UPS Efficiency (\%)} = (\text{Output Power} \div \text{Input Power}) \times 100$ . If your UPS is drawing 105 kW of power and delivering 100 kW to your servers:  $\text{UPS Efficiency} = (100 / 105) \times 100 = 95.2\%$ . UPS efficiency refers to the ratio of the useful output power to the input power, expressed as a percentage. For example, an uninterruptible power supply with a 95% efficiency rating will have 95% of the original input powering the load and connected systems, with the remaining 5% energy “wasted” running the. The efficiency of a UPS (uninterruptible power supply) is defined as the ratio between the output electrical power and the input electrical power. For example, a UPS that is 98 percent efficient passes 98 percent of the.



## Ups efficiency formula

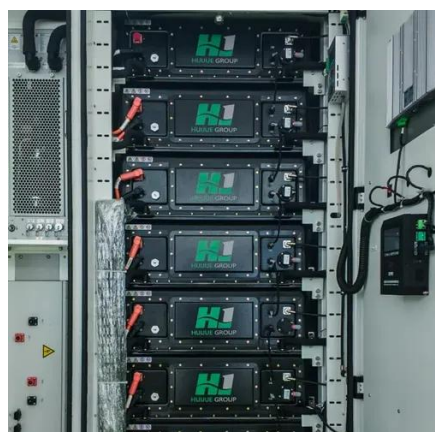


### [Understanding UPS efficiency in data centres](#)

UPS EFFICIENCY refers to the ratio of energy delivered to the load compared to the energy absorbed by the UPS from the mains grid or batteries. Simply put, it measures how effectively the UPS system ...

### [What is UPS efficiency and how is it calculated?](#)

The efficiency of a UPS (uninterruptible power supply) is defined as the ratio between the output electrical power and the input electrical power. For example, in a UPS with 97% efficiency, ...



### [UPS Runtime Calculator & Formula Online Calculator Ultra](#)

Understanding the intricacies of calculating UPS (Uninterruptible Power Supply) runtime and capacity is essential for ensuring the reliability and efficiency of power backup solutions. This ...

### [Stulz: What is UPS Efficiency and How is it Calculated?](#)

UPS Efficiency (%) = (Output Power divided by Input Power) × 100. If your UPS is drawing 105 kW of power and delivering 100 kW to your servers:  
UPS Efficiency = (100 / 105) × 100 = 95.2% This ...



### Conducting an Accurate Utility Cost Analysis Based on UPS ...

The efficiency rating of a UPS -- represented in percentage form -- shows how much of the original incoming utility power is used to power your critical load and how much utility power is simply lost in ...



### What Is UPS Efficiency And How Is It Calculated?

UPS efficiency is based on how much of the original incoming power is needed to operate the UPS. For example, an uninterruptible power supply with a 95% efficiency rating will have 95% of the original ...



### Load Factor Analysis for UPS Power Consumption Estimation

A UPS is most efficient at or near its full load. As the load decreases, the efficiency typically decreases, meaning the UPS draws more power from the mains to deliver the same amount ...



### How UPS Efficiency is Calculated , Fuji Electric Corp. of America



Understanding and calculating UPS efficiency is crucial for optimizing energy use, reducing operational costs, and ensuring environmental sustainability. This article explores how UPS efficiency is ...



### How is ups efficiency calculated?

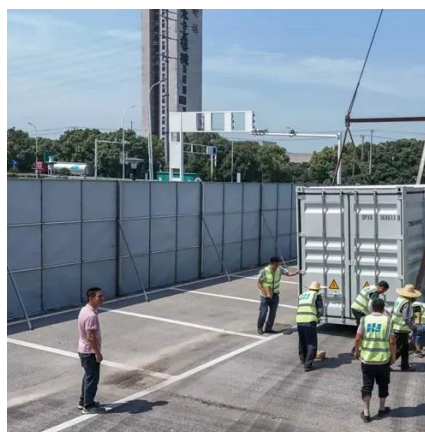
What Is Ups Efficiency? How Does Eco Operating Mode Impact The Efficiency? How to Calculate Ups Efficiency Why Is Efficiency Important to Ups? Ups Efficiency FAQ The efficiency of an uninterruptible power supply is based on how much of the original incoming power is needed to operate the UPS. As an example, a UPS that scores 90% for efficiency will use 90% of the original input for powering the load and the connecting systems. Then, the remaining 10% of energy will simply go to waste whilst running the ... See more on prostarsolar  
Published: Sep 17, 2022 stulz oceania

### Stulz: What is UPS Efficiency and How is it Calculated?

UPS Efficiency (%) = (Output Power divided by Input Power) × 100. If your UPS is drawing 105 kW of power and delivering 100 kW to your servers: UPS Efficiency = (100 / 105) × 100 = 95.2% This ...

### [How to Calculate UPS Runtime: Master Efficiency](#)

Knowing how to calculate your UPS runtime is essential to ensure your devices remain operational during power outages. This knowledge can save you from unexpected disruptions and keep your ...





### **How is ups efficiency calculated?**

UPS Efficiency = UPS Output / UPS Input \* 100%  
Output (or work output) is the total amount of useful work completed without accounting for any waste and spoilage.



## Contact Us

---

For catalog requests, pricing, or partnerships, please visit:

<https://iwap.com.pl>

Phone: +34 919 456 782

Email: [info@iwap.com.pl](mailto:info@iwap.com.pl)

Scan the QR code to access our WhatsApp.

