



Trough type solar power generation collector tube





Trough type solar power generation collector tube



Parabolic trough

This solar energy collector is the most common and best known type of parabolic trough. When heat transfer fluid is used to heat steam to drive a standard turbine generator, thermal efficiency ranges ...

[Types of Trough Solar Thermal Power Generation](#)

The trough solar thermal power generation system is generally composed of parabolic trough concentrator, heat absorption tube, heat storage unit, steam generator and steam turbine generator ...



[10.2. Parabolic Trough Collector Systems , EME 811: Solar Thermal](#)

Parabolic trough technology is the most widespread among utility-scale solar thermal plants. The potential of this type of concentrating collectors is very high and can provide output fluid ...

Design of Parabolic Trough Collector

Abstract - The objective of this study is to optimize the design parameters of a parabolic trough solar collector system to maximize its thermal efficiency.



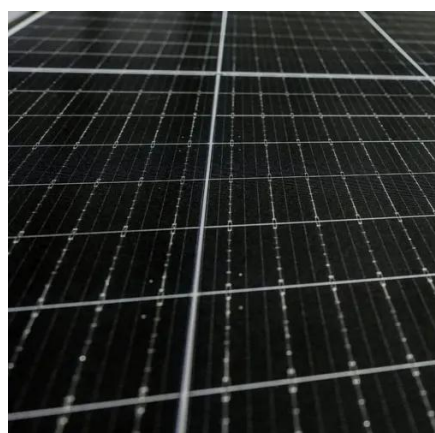
Parabolic Trough Collector: Working, Benefits, And Drawbacks

Parabolic trough collectors are curved mirrors that focus sunlight onto tubes filled with a heat transfer fluid. This fluid becomes hot and is used to generate steam, which can either produce ...



Design and analysis of solar parabolic trough collector

Parabolic Trough Collector (PTC) is a linear concentrating system made of long, parabolic-shaped mirrors and a receiver tube placed along the focal axis of the parabola. DNI (Direct Normal ...



Parabolic Trough

Parabolic trough technology is currently the lowest-cost CSP option for electricity production; however, unsubsidized electricity from troughs still costs about twice that from conventional sources.

ESTELA , Parabolic Trough



Parabolic troughs are the most mature of the concentrating solar power technologies and they are commercially proven. The first systems were installed in 1912 near Cairo in Egypt to generate steam ...



[Parabolic Trough Solar Thermal Electric Power Plants](#)

These plants use a large field of parabolic trough collectors which track the sun during the day and concentrate the solar radiation on a receiver tube located at the focus of the parabolic shaped mirrors.

[Parabolic trough solar collectors: A sustainable and efficient energy](#)

Parabolic trough solar collectors are a type of solar thermal collector that can be used to generate electricity. This paper discusses the potential advantages and challenges of using parabolic ...





Contact Us

For catalog requests, pricing, or partnerships, please visit:

<https://iwap.com.pl>

Phone: +34 919 456 782

Email: info@iwap.com.pl

Scan the QR code to access our WhatsApp.

