



Trina 280 Solar Power Generation





Overview

The Trina 280 Solar Panel is a solar panel with a wattage of 280W and has a voltage of 600V and an amperage of 15 amperes. With Trina's uniform, deep black monocrystalline cells, anodized black aluminum frame and black backsheet the ALLMAX M Plus TSM-280DD05A. 05 (II) 280 watt. vider for solar energy. We believe close cooperation with our partner is critical to success. 0mm thick tempered glass and can withstand snow loads up to 5400Pa and wind loads up to 2400Pa The Trina Solar ALL MAX Plus. Experience superior energy generation with this solar module, delivering an efficiency rating of 17. 11% for maximum utilization of sunlight. While they are not the only means of comparison, they are important determinants in how much electricity you can produce with a solar. Home > Solar Panels > Trina Solar Panels > Trina Solar TSM-280DD05A. Be the first to write a review Trina Solar 280 Watt Black Frame Solar Panel - BoB -.



Trina 280 Solar Power Generation



[TSM-280DEG5 \(II\) Solar Panel Information \(Trina Solar Co Ltd\)](#)

See the table below for available information we have about Trina Solar Co Ltd TSM-280DEG5 (II) solar panels. We do our best to provide information such as the TSM-280DEG5 (II) panel dimensions, ...

[Trina Deep Black ALLMAX M Plus 280W Solar Panel](#)

The ALLMAX M Plus TSM-280 Deep Black has the same great reliability as the ALLMAX, and is compatible with all major balance of system components and most module-level power electronics.



Trina TSM-DD05A.05 (II)-280

All you need to know about the TSM-DD05A.05 (II)-280 solar panel including rating, cost, efficiency, and warranty terms.

60 CELL 280-315W 0/+

POSITIVE POWER TOLERANCE vider for solar energy. We believe close cooperation with our partner is critical to success. Trina Solar now distributes its PV products to over 60 coun



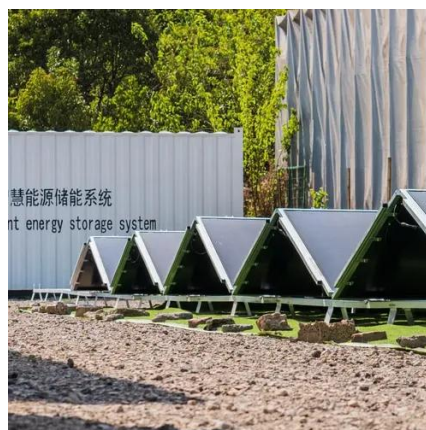
Trina Solar TSM-280 PD05A

Experience superior energy generation with this solar module, delivering an efficiency rating of 17.11% for maximum utilization of sunlight.



[Trina 280 Solar Panel - Solar Panels and Parts](#)

The Trina 280 Solar Panel is a solar panel with a wattage of 280W and has a voltage of 600V and an amperage of 15 amperes. The Trina 280 Solar Panel is made with 4.0mm thick tempered glass and ...



[Trina Solar > 280 Watt Black Frame Solar Panel](#)

Trina Solar 280 Watt Black Frame Solar Panel - BoB - TSM-280DD05A.05 o EcoDirect sells Trina Solar Panels at the lowest cost. Order Online or Call Us! 888-899-3509.



[Trina Allmax 280W TSM-280PD05.08 \(II\) Solar Panel](#)



Through constant innovation, Trina Solar continues to push the PV industry forward by creating greater grid parity of PV power and popularizing renewable energy.



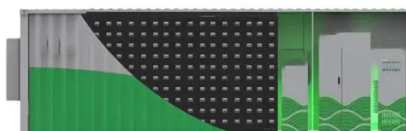
TRINA TSM280 Solar Panels

The Trina Solar TwinMax TM280 solar panel is a high-performance, durable, and efficient option for those looking to maximize their energy production. Its bifacial design, low LID, and low LCOE make it ...



[Trina 280 Solar Panel - Solar Panels and Parts](#)

The Trina 280 Solar Panel is a solar panel with a wattage of 280W and has a ...



THE ALLMAX M PLUS MODULE

As a leading global manufacturer of next generation photovoltaic products, we believe close cooperation with our partners is critical to success.



Contact Us

For catalog requests, pricing, or partnerships, please visit:

<https://iwap.com.pl>

Phone: +34 919 456 782

Email: info@iwap.com.pl

Scan the QR code to access our WhatsApp.

