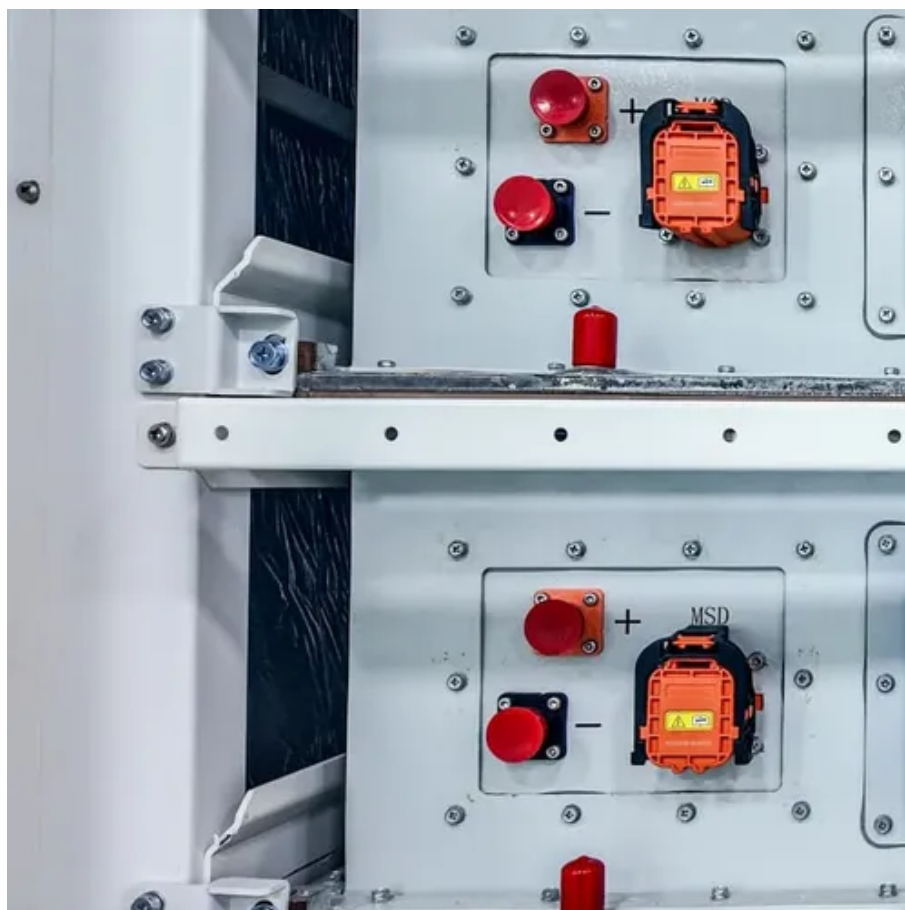




Tonga communication base station power requirements





Tonga communication base station power requirements



[Tonga Solar Communication Base Station Specifications](#)

Solar telecommunications base station For base station load smaller than 2kW, it is a suitable power supply system scheme in remote areas, especially under the trend of high global crude oil

[Tonga Global Communications Base Station Power Supply](#)

Among various battery technologies, Lithium Iron Phosphate (LiFePO4) batteries stand out as the ideal choice for telecom base station backup power due to their high safety, long lifespan, and excellent ...



[Tonga communication base station power requirements](#)

How much power does a base station have? Maximum base station power is limited to 38 dBm output power for Medium-Range base stations, 24 dBm output power for Local Area base stations, and to ...



Communication Regulations

Tonga is under the Asia-Pacific Region - Region 3, hence, Tonga is adopting ITU's IFAT for Region 3 as its NFAT. For such radio communication service allowed to be used in Tonga, that service and its ...



Tonga company builds communication base station batteries

The lead batteries used for the project are 2V valve regulated HOPPECKE cells. The installation of this microgrid reduced the island's dependence on diesel generators as a primary power source by 50%.

Communication Regulations

National Spectrum Plan License Types and Fees
Frequency Block Assignment Formula
License Exemption
The National Spectrum Plan (NSP) is a document plan detailing how to manage radio spectrum in the Kingdom under the direction of the National Spectrum Rules 2019 and Communication Act 2015. Within the NSP it contains a summary of allocated bands with its intended use for each radio communication services. This table is derived from an International See more on communications.gov.towixsite



Technical Rules 2018 (Type Approval) , Communication

The following radio equipment among others, are required by the Technical Rule 2018 to be type-approved prior to being marketed for use in Tonga, or sold, or otherwise supplied for use in Tonga:

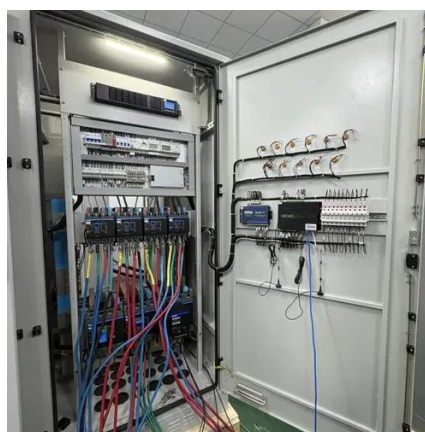


[Communication Batteries: Why Telecom Base Stations Have Unique ...](#)

The phrase "communication batteries" is often applied broadly, sometimes including handheld radios, emergency devices, or general-purpose backup batteries. In practice, when ...

[Tonga s wind and solar complementary policy for communication ...](#)

The project achieved its proposed impact, in terms of helping Tonga reduce its dependence on imported fossil fuel for power generation with OIREP assets estimated to have reduced diesel usage by 0.5 ...



[Tonga 5G base station communication equipment](#)

From modems and base stations to RAN, antenna arrays, and core networks, these companies are providing cutting-edge solutions. Leading vendors are offering innovative products to enhance ...

[Tonga communication base station power requirements](#)

Telecom base stations require reliable backup power to ensure uninterrupted communication services. Selecting the right backup battery is crucial for network stability and



[Technical Rules 2018 \(Type Approval\) , Communication](#)



The following radio equipment among others, are required by the Technical Rule 2018 to be type-approved prior to being marketed for use in Tonga, or sold, or otherwise supplied for use in Tonga:



Contact Us

For catalog requests, pricing, or partnerships, please visit:

<https://iwap.com.pl>

Phone: +34 919 456 782

Email: info@iwap.com.pl

Scan the QR code to access our WhatsApp.

