



# The wind turbine blades rotate slowly





## Overview

---

These blades are engineered to capture the maximum amount of wind energy. Let's explore the science and. The rotor blade spins, powered by the flow of wind over its surface, similar to an aircraft's wing creating lift by the air flowing beneath it. more Sound or visuals were significantly edited or digitally generated. Strong winds can damage turbines, so they use braking systems to protect themselves. It is known that the wingspan of a medium-sized passenger plane is about 30 meters, and the wingspan of an ordinary large passenger plane can hardly reach 60 meters.



## The wind turbine blades rotate slowly



### How Fast Do Wind Turbines Turn and Why?

Utility-scale turbines, often seen in wind farms, rotate quite slowly, typically operating at a rotational speed between 10 and 20 revolutions per minute (RPM).

### [Wind Turbine Explained: Why Do Giant Wind Turbines Spin So Slowly](#)

While the blades rotate calmly, the internal shaft and generator spin at high speed to convert wind energy into electricity efficiently.



### How fast do wind turbines spin ,Freen

Race cars might seem fast, but wind turbine blade tips match their incredible speeds, even though the main rotor appears to turn slowly. This happens because the blade tips must cover ...



### [Can a wind turbine generate electricity at such a slow speed?](#)

We see that the blades rotate slowly, but the fan actually drives the generator to rotate at high speed through a gearbox. Of course, the power generation of wind turbines is not only related to ...



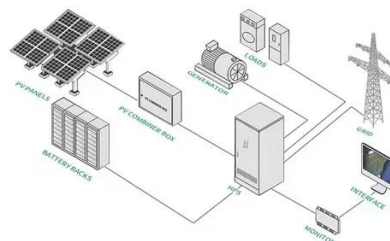
### The wind turbine blades rotate so slowly

If the turbine's propeller blades rotate too slowly, it allows too much wind to pass through undisturbed, and thus does not extract as much energy as it potentially could.



### Slow rotation of turbine blades at low wind speeds

Most wind turbines operate by a 'cut-in' wind speed at which the turbine begins to generate electricity and the blades can move at a maximum rotation speed. However, the blades can still rotate below ...



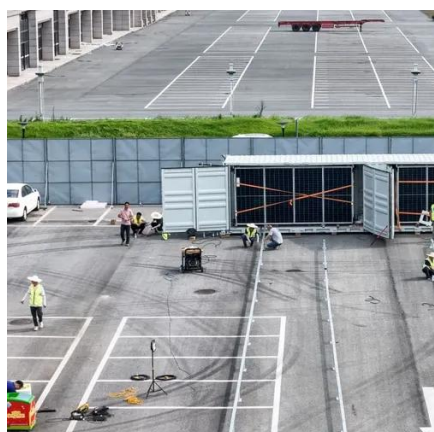
### How fast do wind turbine blades rotate?

Wind turbines, those modern giants with their huge blades and slow spinning speeds, have become an important part of the renewable energy sector. However, these seemingly slow ...

### Wind Blades Explained: How Slow Rotation Delivers High Power



At first glance, wind turbines seem to rotate slowly--especially the massive wind blades. Yet, these low-speed giants can generate megawatts of power reliably. Why is that? The answer lies ...



### **Why do wind turbines spin slowly?**

When blades rotate slowly, they interact more effectively with the wind. This slow rotation allows the blades to align better with the wind direction, maximizing the capture of wind energy.

### **Why Do Wind Turbines Spin Slowly**

Turbines appear to be turning slowly due to scale, RPM, and torque. If there is too little wind and the blades are moving too slowly, the wind turbine no longer produces electricity. Power ...





## Contact Us

---

For catalog requests, pricing, or partnerships, please visit:

<https://iwap.com.pl>

Phone: +34 919 456 782

Email: [info@iwap.com.pl](mailto:info@iwap.com.pl)

Scan the QR code to access our WhatsApp.

