



The trap of installing solar photovoltaic panels in rural areas





Overview

While solar installations are not the primary drivers of land-use change in rural areas—low-density development has far outpaced solar utility land use—they have nonetheless attracted significant attention due to their visual prominence on agricultural land, leading to. While solar installations are not the primary drivers of land-use change in rural areas—low-density development has far outpaced solar utility land use—they have nonetheless attracted significant attention due to their visual prominence on agricultural land, leading to. This Market Intel will dive deeper into solar energy's expansion and economic impacts, particularly in rural America, where there is great tension between private property rights and concerns over the loss of productive farmland. Solar's Growth Over the last decade, solar energy production has. Across the country, solar farms have experienced rapid growth, supported by advancements in technology, cost reductions, and policy initiatives such as state-level renewable portfolio standards and tax credits. As shown in Map 1, roughly 18% of ground-mounted PV facilities in the U. As the world moves towards more sustainable energy solutions, solar panels offer a promising avenue for rural electrification, agricultural sustainability. have become the prime contender to host utility-scale solar photovoltaics (PV). However, many rural zoning ordinances are silent on utility-scale PV, introducing scale PV because they lack objective data on its potential economic impacts. By combining stakeholder engagement, economic and power system. The hazardous chemicals used for manufacturing photovoltaic (PV) cells and panels must be carefully handled to avoid releasing them into the environment.



The trap of installing solar photovoltaic panels in rural areas



Solar energy and the environment

As with any type of power plant, large solar power plants can affect the environment at or near their locations. Clearing land for a power plant may have long-term effects on the habitats of native plants ...

[The pros and cons of solar farms in agricultural land](#)

Here, we explore the pros and cons of solar farms on rural land, from economic factors to environmental considerations, with valuable insights from Knight Frank's Rural Consultancy team. ...

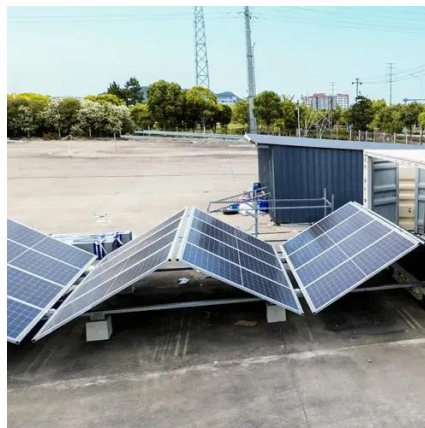


[Solar panels in rural areas: costs, benefits & challenges](#)

However, the implementation of solar technology in these areas comes with its own set of unique challenges and considerations. Rural regions often face distinct energy needs and infrastructure ...

[Solar Energy Expansion and its Impacts on Rural Communities](#)

Solar energy is leading the way, with much of the new development occurring on farmland and in rural communities. It has the potential to be a financial opportunity for landowners, yet it can ...



The Potential of Agrivoltaics for the U.S. Solar

Agrivoltaics - the co-location of solar energy installations and agriculture beneath or between rows of photovoltaic panels - has the potential to help ease this land-use conflict.



Solar Energy Initiatives in Rural Communities

Controversies surrounding the use of solar energy in rural communities include concerns about the initial cost of installation, intermittency of supply, and potential land-use conflicts.



Solar Power Depletes Farmlands of Rich Soil

Driven by subsidies, mandates and federal and state policies compelling the use of more renewable energy, solar energy facilities are now displacing farmland at an increasing rate.

Harvesting the Sun-Twice: Agrivoltaics and Rural Land-Use



Currently, there are several ways solar panels can be installed to complement agricultural activities. Fixed vertical or tilted panels provide partial shading for crops and vegetables, protecting ...



BRIDGING KNOWLEDGE GAPS IN SOLAR ENERGY'S

...

Silence in local zoning ordinances is the biggest barrier to solar deployment, removing more prime solar sites from consideration than explicit bans or strict setback rules.

Overcoming Challenges of Providing Solar Energy to Rural Communities

While supplying solar energy to rural communities may face significant challenges, there are potential solutions that can help overcome these barriers and promote the adoption of solar power





Contact Us

For catalog requests, pricing, or partnerships, please visit:

<https://iwap.com.pl>

Phone: +34 919 456 782

Email: info@iwap.com.pl

Scan the QR code to access our WhatsApp.

