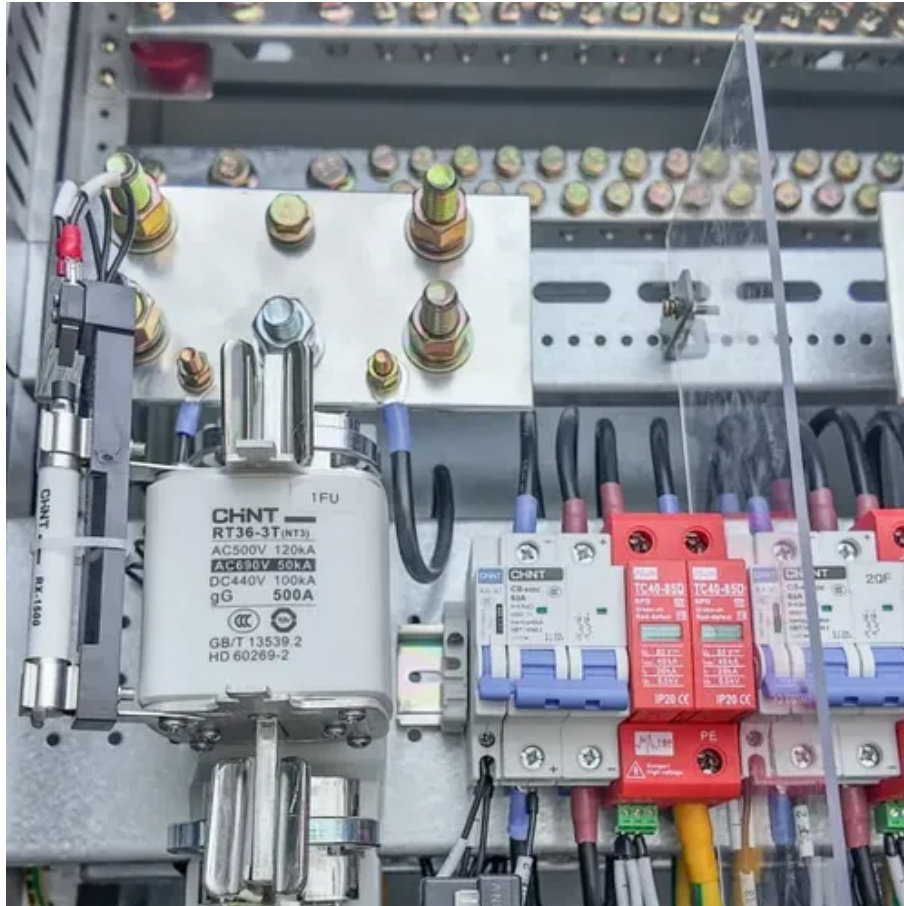




The photovoltaic panel series current takes the minimum





Overview

Enter your solar panel's voltage (V_{mp}), current (I_{mp}), and the number of panels you're wiring together. Some key points about current for solar panels: Short Circuit Current (I_{sc}): The maximum current your panel can produce in perfect conditions. That's a very. A Solar Photovoltaic Module is available in a range of 3 WP to 300 WP. Series connections increase overall voltage, 2.



The photovoltaic panel series current takes the minimum



Solar Panel Power Calculator

Solar Panel Calculator is an online tool used in electrical engineering to estimate the total power output, solar system output voltage and current when the number of solar panel units connected in series or ...

[The photovoltaic panel series current takes the minimum](#)

First, you wire the 12V/8A panel and 16V/6A panel in series to create a series string with a voltage of 28 volts (12V + 16V) and a current of 6 amps (the lowest current rating of the 2 panels).



[PV String Design Explained: Series, Parallel & MPPT Matching](#)

PV string design means arranging solar panels in series and parallel combinations so their total voltage and current match the inverter's MPPT input range. It ensures your inverter operates ...



[Series, Parallel & Series-Parallel Connection of PV Panels](#)

If all the modules in table 2 are connected in series then the current flowing through the series-connected modules is determined by the module with the lowest current.



[Series, Parallel & Series-Parallel Connection of PV Panels](#)

Learn how to calculate string voltage & current for solar panel configurations with detailed analysis.

[Solar Panel Series and Parallel Calculator](#)

Enter your solar panel's voltage (V_{mp}), current (I_{mp}), and the number of panels you're wiring together. Then hit Calculate to instantly see total voltage, current, and wattage for both series and parallel ...



[String Voltage and Current Calculation for Different Solar Panel](#)

Learn how to calculate string voltage & current for solar panel configurations with detailed analysis.



[Understanding Solar Panel Voltage and Current Output](#)



Decode solar panels specifications to safely connect your panels to power station or charge controller. This quick guide unlocks full solar potential.



[Photovoltaic panel series current calculation formula](#)

In this article, I'll review the different current ratings of PV modules and walk you through the process of how to properly calculate the current values as required by the NEC, as well as the resulting ...

[Solar Panels Series and Parallel Calculator](#)

Definition: This calculator determines the total voltage, current, and power output of solar panels connected in series and parallel configurations.

Purpose: It helps solar installers and DIY enthusiasts ...



[How to calculate series and parallel connection of solar photovoltaic](#)

To determine the total voltage and current in solar photovoltaic systems, precise calculations are imperative. For series connections, the formula used is straightforward; one simply ...





Contact Us

For catalog requests, pricing, or partnerships, please visit:

<https://iwap.com.pl>

Phone: +34 919 456 782

Email: info@iwap.com.pl

Scan the QR code to access our WhatsApp.

