



# Summary of Wind Power Generator Bearing Replacement





## Overview

---

This study seeks to establish a comprehensive baseline of knowledge for the replacement and damage of main bearings in wind turbines. This report is available at no cost from the National Renewable Energy Laboratory (NREL) at [www.nrel.gov](http://www.nrel.gov). Hart, Edward, Kaiya Raby, Jonathan Keller, Shawn Sheng, Hui Long, James Carroll, James Brasseur, and Fraser Tough. Main Bearing Replacement and Damage – A Field Data on 15. Wind turbine main bearing failure is one of the primary reasons for increases in operations and maintenance (O&M) costs and turbine downtime, especially on some of the larger land-based wind turbines (2X-6X megawatt fleet). If they fail or show clear. The process of replacing bearings in a wind turbine is complex and requires meticulous planning and execution.



## Summary of Wind Power Generator Bearing Replacement



### [Wind Turbine Main Bearing Reliability Analysis, Operations, and](#)

This paper addresses these issues and includes land-based main bearing reliability analysis, failure mechanisms, damage modes, life-impacting factors, maintenance best practices, and mitigation ...

### [Generator bearing replacement for wind power](#)

A common challenge in wind turbine generator maintenance is bearing failure due to static discharges and lightning strikes. White-etching cracks (WEC) and other kinds of damage caused by electrical ...

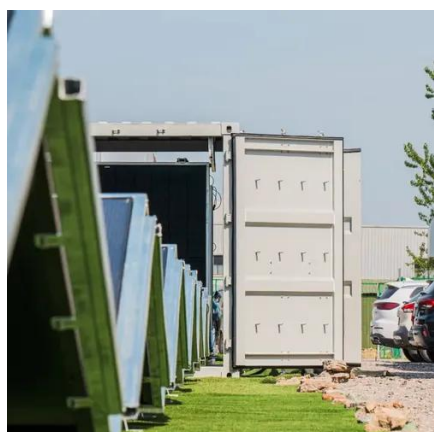


### [Main Bearing Replacement and Damage-A Field Data Study on ...](#)

These data included the dates of turbine/main bearing commissioning for all wind turbines, the date of replacement for each main bearing that was exchanged, turbine rated-power levels, and, where ...

### [Process of Replacing Bearings in a Wind Turbine](#)

The process of replacing bearings in a wind turbine is complex and requires meticulous planning and execution. Here is a detailed overview of the process in English.



### [Tribological challenges and advancements in wind turbine bearings: A](#)

This paper presents a comprehensive and up to date review of tribological issues related to rolling element bearings widely used in various parts (main shaft, gearbox, pitch, yaw, and ...

### **Main Bearing Replacement and Damage**

This study seeks to establish a comprehensive baseline of knowledge for the replacement and damage of main bearings in wind turbines. The purpose of this report is to provide a high-level ...



### **Generator Bearing Replacement Guide**

This document provides a method statement for replacing the generator bearings on a wind turbine. It outlines 4 main steps: 1) Isolating the generator and removing covers to access the ...

### [Replacement of large components for wind turbines](#)



The following article explains which components are typically affected, how a large component replacement works, what risks and planning requirements exist - and why this measure ...



### [Bearing and gearbox failures: Challenge to wind turbines](#)

Main bearing failures caused by micropitting, WECs in gearbox bearings, and generator bearing failures are identified as research priorities, but until the failure modes are well understood, ...



## Contact Us

---

For catalog requests, pricing, or partnerships, please visit:

<https://iwap.com.pl>

Phone: +34 919 456 782

Email: [info@iwap.com.pl](mailto:info@iwap.com.pl)

Scan the QR code to access our WhatsApp.

