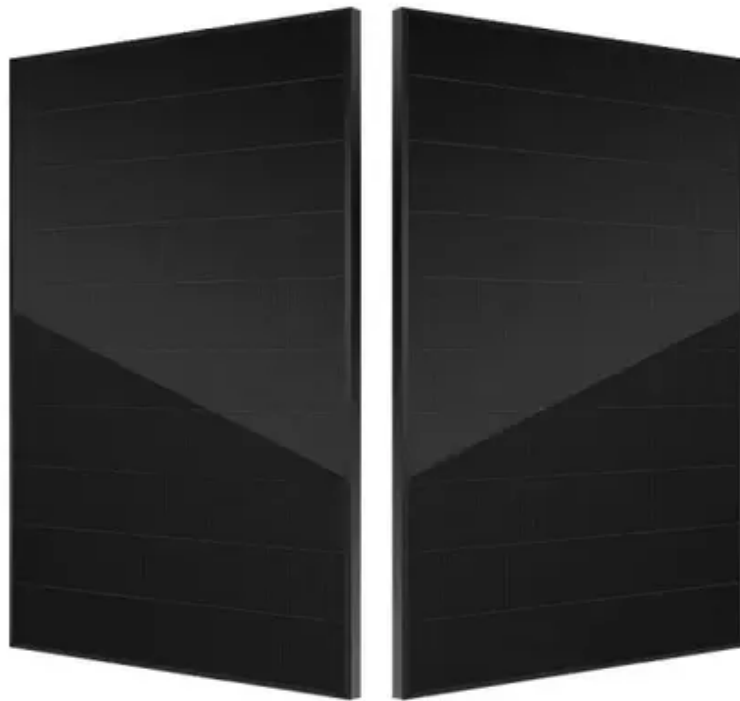




Steel pipe combined tower for wind power generation





Overview

The invention meets the requirements of high cavitation and large-scale wind turbine generator, the total height of the upper steel tower cylinder and the lower steel tube concrete tower cylinder can reach not less than 150m, and the invention has the. The invention meets the requirements of high cavitation and large-scale wind turbine generator, the total height of the upper steel tower cylinder and the lower steel tube concrete tower cylinder can reach not less than 150m, and the invention has the. □ Dimensions limited by transportation: length 25 m and more but diameter <4. 30 m! □ Guidelines of the certifying company (eg. European Technical Approval (ETA) for the clamping system) □ Verification must be provided! □ Selection of steel with regard to. Fracture. Taking an actual 3MW steel-concrete composite wind turbine tower as an example, a finite element model of the tower structure was established, and static bearing capacity and dynamic time history response analyses were performed to identify the locations where the structure is prone to failure. Steel is crucial in wind energy due to its strength, durability, and flexibility, making it ideal for both onshore and offshore wind turbines.



Steel pipe combined tower for wind power generation



[Wind-Induced Response Analysis and Fatigue Reliability Study of a ...](#)

Taking an actual 3MW steel-concrete composite wind turbine tower as an example, a finite element model of the tower structure was established, and static bearing capacity and dynamic time history ...

[Hybrid FRP-concrete-steel prestressed double-skin wind turbine ...](#)

This paper presents a new form of hybrid wind turbine towers which possesses many important advantages over the existing tower forms and are particularly suitable for large offshore ...

Our Lifepo4 batteries can be connected in parallels and in series for larger capacity and voltage.



[Analysis theory and engineering applications of steel-concrete hybrid](#)

This paper presents the latest research developments in steel-prestressed concrete hybrid towers and prestressed concrete-filled steel tubular (CFST) lattice towers, which play pivotal roles in advancing ...

[Supporting Structures of the Towers of Wind Turbines](#)

Design of these components and the nature of the welding connection has an impact on the load capacity of the tower tubing, in particular in the fatigue limit state (FLS)! Therefore, specification as ...



Intelligent optimal design of steel-concrete hybrid wind turbine tower

The steel-concrete hybrid wind turbine tower possesses the advantages of high stiffness and low comprehensive cost, showing promising prospects in applying tall wind turbine towers.



[Steel-Concrete Hybrid Turbine Tower in the Real World: 5](#)

These towers combine the strength of steel with the durability of concrete, creating a versatile solution for wind energy projects.



[\(PDF\) Analysis theory and engineering applications of steel-concrete](#)

As a result, steel-concrete hybrid high-tower structures (referred to as "hybrid high-tower structures") have emerged as the primary support for large-scale wind turbines.



CN110863953A



The invention provides a circular concrete filled steel tube combined wind power unit tower structure which comprises an upper steel tube tower cylinder and a lower steel tube



[Steel Structure For Wind Power Plant , High-Strength Steel Wind ...](#)

Explore the role of steel structures in wind power plants, including high-strength steel towers, durable foundations, and modular designs for onshore/offshore wind farms.



Contact Us

For catalog requests, pricing, or partnerships, please visit:

<https://iwap.com.pl>

Phone: +34 919 456 782

Email: info@iwap.com.pl

Scan the QR code to access our WhatsApp.

