



# Standard requirements for EMS room of communication base station





## Overview

---

NFPA requires the system must be capable of all radio system frequencies assigned by AHJ. 3 requires In-building emergency responder communication enhancement systems installed within buildings shall be listed and labeled in accordance with UL 2524 . This course was adapted from the U. Fire Administration, “Safety and Health Considerations for the Design of Fire and Emergency Medical Services Stations” which is in the public domain. This report was developed through a cooperative research agreement between the U. First responder communications.



## Standard requirements for EMS room of communication base station

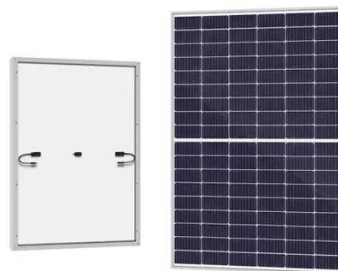


### [COMMUNICATION SITE BUILDING DESIGN AND ...](#)

For shipping, these structures must meet strict dimensional requirements, including protrusions such as HVAC, RF entry assemblies, or AC entrances. In the US, state certification may be required if pre-fab ...

### [Communication base station EMS fire protection modification ...](#)

This standard provides requirements for fire protection of telecommunications facilities providing telephone, data, internet transmission, wireless, and video services to the public as well as life safety ...



### [Fire Station Design Guide , PDF , Wall , Door](#)

This document provides standard design criteria for fire stations, including requirements for different sized stations housing one, two, or three fire companies.

### [10 things you need to consider when it comes to your EMS station](#)

Provide Spaces to Promote Rest with Individual Dorms, Safe Sleep Room  
Look For Energy Efficiency When Choosing Appliances  
Carve Out Specific Spaces For Specific Uses  
Reconsider Your Alarms and Lighting, Especially at Night  
Make Physical Fitness A Priority  
Plan Ahead For Your



Power Needs  
Design Ambulance Bay Doors For Safety and Speed  
Ventilate The Ambulance Bay  
Build in Disinfection Capabilities  
Provide Secure Drug Storage & Inventory Management  
Be sure to include sufficient wiring and docking stations to handle all the equipment and devices your crews need, both now and in the future. Take an inventory of your current equipment and personnel to account for the number of USB connections and power sources you'll need for smartphones, tablets, etc., and include these outlets in your dormitor See more on ems1  
Imrsitestandard [PDF]



## COMMUNICATION SITE BUILDING DESIGN AND ...

For shipping, these structures must meet strict dimensional requirements, including protrusions such as HVAC, RF entry assemblies, or AC entrances. In the US, state certification may be ...



### [Designing Fire And EMS Stations: A Comprehensive Guide](#)

The station's needs assessment should begin with community expectations and operational needs, which can be broken down into more specific requirements. For example, a general need might be to ...

### [When Emergency Responder Communication Enhancement Systems ...](#)

If the building is not able to meet the minimum signal requirements, then an ERCES system will need to be designed and installed for the building in accordance with NFPA 1225.



### **.01 Scope. .02 Base Stations in General.**

30.08.01.03 shall have the equipment necessary



to conduct a dual consult between EMS and a Maryland Base Station for each Maryland patient transported to the out of state trauma or specialty ...



## Public Safety Primer

The rules set forth standards, requirements and procedures for installation, acceptance testing, daily inspection, annual certification and five-year recertification of ARCS.



## C8: Communications [5/5/03]

Written protocols shall describe communications procedures for operation of the System, all base station control points, and field units. Mobile base control points and mobile units shall have ...

## [10 things you need to consider when it comes to your EMS station](#)

Here are 10 things to consider when upgrading your existing station or planning a new one: 1. Provide spaces to promote rest with individual dorms, safe sleep room. Traditionally, stations ...



## [Technical requirements for EMS installation of communication ...](#)



The Massachusetts EMS System regulations, 105 CMR 170.380(D), establish minimum standards with which all ambulance services' communications and communications equipment must comply.





## Contact Us

---

For catalog requests, pricing, or partnerships, please visit:

<https://iwap.com.pl>

Phone: +34 919 456 782

Email: [info@iwap.com.pl](mailto:info@iwap.com.pl)

Scan the QR code to access our WhatsApp.

