



Solar telecom integrated cabinet inverter grid-connected equipment mailbox





Solar telecom integrated cabinet inverter grid-connected equipment



[HLBWG Photovoltaic Grid-Connected Cabinet](#)

HLBWG Photovoltaic Grid-Connected Cabinet It can be used in solar ...

[Integrated Solar & Battery Cabinet for Remote Telecom Systems](#)

Designed for remote locations, it integrates solar controllers, inverters, and lithium battery packs to ensure stable and continuous power for telecom equipment, surveillance systems, and off-grid ...



[Indoor Photovoltaic Telecom Energy Cabinet](#)

LZY Energy's Indoor Photovoltaic Energy Cabinets are solar-powered integrated equipment especially designed to meet the requirements of communication base station rooms.

[Solar telecom integrated cabinet hybrid energy dedicated inverter ...](#)

Discover how a grid-connected photovoltaic inverter and battery system enhances telecom cabinet efficiency, reduces costs, and supports eco-friendly operations.



Solar-Powered Telecom Cabinet

With this solar-powered solution, telecom operators can reduce their reliance on the grid and ensure uninterrupted communication services even in remote areas. This telecom cabinet is equipped with a ...



[HLBWG Photovoltaic Grid-Connected Cabinet](#)

HLBWG Photovoltaic Grid-Connected Cabinet It can be used in solar photovoltaic power generation systems, and can also be used to convert, distribute and control electrical energy between ...



[Grid-connected photovoltaic inverters: Grid codes, topologies and](#)

The reader is guided through a survey of recent research in order to create high-performance grid-connected equipments. Efficiency, cost, size, power quality, control robustness and ...



NEMA Enclosures & Integrated Solutions



Whether for remote telecom stations, solar hybrid systems, or industrial automation units, we provide fully assembled cabinets with integrated power, cooling, and control systems for plug-and-play ...

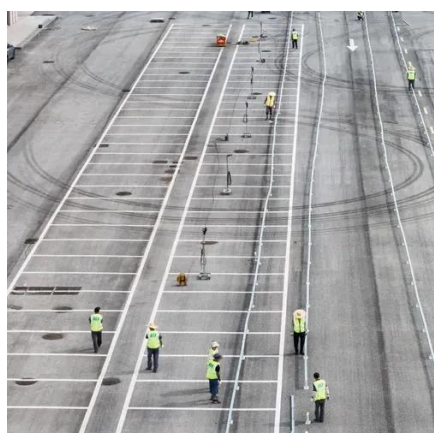


[Smart Power Cabinet Solutions , PDF , Electrical Grid](#)

The Shoto smart power cabinet is a turnkey solution for powering communication base stations. It integrates multiple energy sources like solar, wind, grid, and batteries into a hybrid system. The ...

[Grid-connected Photovoltaic Inverter and Battery System for Telecom](#)

Discover how a grid-connected photovoltaic inverter and battery system enhances telecom cabinet efficiency, reduces costs, and supports eco-friendly operations.



Telco Towerbox

The GPT Telco TowerBox is a modular, all in one, plug and play hybrid power system for off-grid telecom towers. Combining solar, smart battery storage, and diesel backup, it ensures 24/7 uptime ...



Contact Us

For catalog requests, pricing, or partnerships, please visit:

<https://iwap.com.pl>

Phone: +34 919 456 782

Email: info@iwap.com.pl

Scan the QR code to access our WhatsApp.

