



Solar power generation is not connected to the internet





Overview

If your devices use Wi-Fi, ensure the home network is online and that the inverter is properly connected. This can clear temporary glitches. Also, check if your monitoring software or mobile app. Scroll to the bottom of any page to find a sun or moon icon to turn dark mode on or off! I have a SolarEdge SH5000 inverter, with display, and 18 panels. I lost internet connectivity for monitoring last week on 5/16 at noon. System is still producing, as I can see it on the front. My solar System is not connected to the internet & i don't know how to fix it.



Solar power generation is not connected to the internet

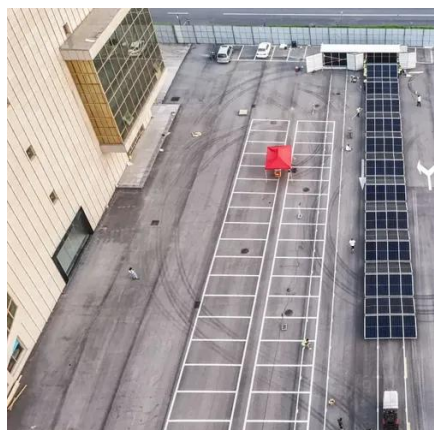


Network Connection Issues

On the Networking page, Wi-Fi has been configured but the system is not connected to Tesla (indicated with a red exclamation point icon).

[SolarEdge SH5000 Lost Internet Connection](#)

I've not changed my router or inverter settings (prior to this happening), it just stopped connecting and sending data. My setup is ethernet to an extender to the router.



[How to Fix Wifi Connected No Internet on Solar Inverter](#)

In recent years, solar energy has become an increasingly popular and sustainable way to power homes and businesses. Many modern solar inverter systems come equipped with WiFi ...

Plant Offline (Wi-Fi)

Depending on the model, Sungrow Inverters either come with a Wi-Fi dongle or an eShow Screen that plugs into the bottom of the inverter, both of which can be used to connect the inverter to the internet ...



[Troubleshooting SolarEdge Inverter Connection Issues After Changing](#)

When you change your internet provider or get a new router, your SolarEdge app will stop working. This is because your inverter is no longer connected to the internet.



[Solar Communication Issues & Troubleshooting](#)

Solar communication is vital to solar production and savings. Learn the top solar communication issues and troubleshooting steps to take.

ESS



My solar System is not connected to the internet & i don't know how to

Please power off the gateway (by switching of the gateway breaker) and power it on. The LEDs will start flashing. If you are still facing issue in connecting the gateway to Internet, Please reach out to ...

[Wi-Fi Troubleshooting Guide - mySolarEdge](#)



Before configuring the Wi-Fi, we recommend that you verify the inverter is working and responsive by checking for illuminated LEDs on the inverter. If the inverter is not responsive, contact your ...



[How to connect solar power to the internet , NenPower](#)

To connect solar power systems to the internet effectively, adopting the appropriate hardware is crucial. Many solar inverters come with built-in Wi-Fi connectivity or Ethernet ports ...

[System is producing but not communicating](#)

Your WIFI router has changed but the connection details have not been updated in the inverter/communications device. Of course, this only applies if your device is connected via WIFI.



[Wi-Fi Troubleshooting Guide - mySolarEdge](#)

Your WIFI router has changed but the connection details have not been updated in the inverter/communications device. Of course, this only applies if your device is connected via WIFI.



Contact Us

For catalog requests, pricing, or partnerships, please visit:

<https://iwap.com.pl>

Phone: +34 919 456 782

Email: info@iwap.com.pl

Scan the QR code to access our WhatsApp.

