



# Solar power generation and sunshade





## Overview

---

The truth is, solar panels can still produce electricity in the shade, but at a reduced rate. They harness sunlight to power homes and businesses. But what happens when clouds roll in or trees cast shadows?

People often wonder if shade makes solar panels useless. This article will explore the impact of shade on solar panel performance, shed light on. Shade on your roof or property is just one factor in designing a solar power system custom-made for your home, roof, and energy usage.



## Solar power generation and sunshade



### [Game-Changer Solar Panels That Work in the Shade](#)

Solar panels solely rely on sunlight to generate electricity. Shading, whether caused by trees, buildings, or other obstacles, can significantly reduce the efficiency and power output of solar ...

### [Do Solar Panels Work in the Shade? Uncover the Truth](#)

The truth is, solar panels can still produce electricity in the shade, but at a reduced rate. Shade affects their ability to absorb sunlight, which is vital for energy production. Different types of ...



### [Do solar panels work in the shade? A complete guide to solar panel](#)

In this article, I will talk about the relation between solar power production and sunlight conditions, the effect of shading on a solar panel, a string of panels, and on multiples string of solar ...



### [The Effects of Shade on Your Home Solar Panels](#)

Although direct sunlight is optimal for solar energy production, solar panels can still produce electricity in partially-shaded conditions.

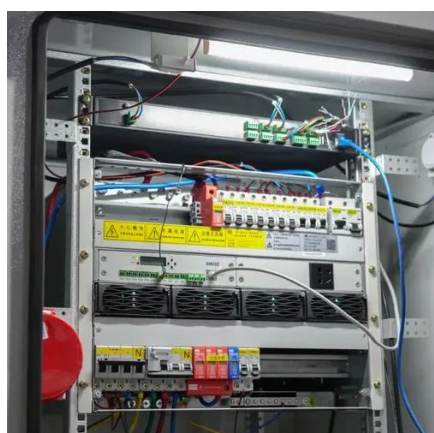


### [Best Shade Tolerant Solar Panels for Efficient Power in Low Light](#)

We've selected top-performing solar panels designed to maintain efficiency with partial shade, portability, or specialized uses like powering motorized blinds or camping equipment.

### [Using solar panel shades for generating electricity - pros and cons](#)

By combining shading capabilities with renewable energy generation, solar panel shades offer numerous advantages, including enhanced comfort, energy savings, environmental sustainability, and potential ...



### **Do Solar Panels Work in the Shade?**

When sunlight hits the solar cells directly, it provides the maximum energy input for electricity generation. However, shade can hinder this process and impact solar panel efficiency.

### [Effect of Shading on Solar Panels' Efficiency](#)



In fact, experts say that you may lose up to 40 to 80% of the potential of solar generation due to shade. By casting a shadow over a panel, shades reduce the amount of sunlight reaching the ...



### [How Shade Affects Solar Panel Performance , Complete Guide](#)

Solar panels generate electricity when sunlight strikes photovoltaic (PV) cells, producing direct current (DC) that an inverter converts into AC power for your home or business. When any part of a panel is ...

### **Solar Panels: Direct Sunlight vs Shade**

Embracing solar power and optimizing its utilization in both direct sunlight and shade will play a pivotal role in our transition to a cleaner and more sustainable energy landscape.





## Contact Us

---

For catalog requests, pricing, or partnerships, please visit:

<https://iwap.com.pl>

Phone: +34 919 456 782

Email: [info@iwap.com.pl](mailto:info@iwap.com.pl)

Scan the QR code to access our WhatsApp.

