



Solar photovoltaic panel model size





Overview

The standard residential solar photovoltaic panel size you'll see most often is based on a 60-cell configuration, typically measuring about 67 inches long by 40 inches wide. This size offers the best balance between power output, handling ease, and fitting standard roof dimensions. At 40-46 pounds, they can be safely handled by. Example: 5kW solar system is comprised of 50 100-watt solar panels. Alright, your roof square footage is 1000 sq ft. Can you put a 5kW solar system on your roof?

For that, you will need to know what size is a typical 100-watt solar panel, right?

To bridge that gap of very useful knowledge needed. However, behind the jargon lies a clear system of industry standards that dictates the standard solar panel sizes you see on homes and commercial properties worldwide. The insights that follow weigh the gains and compromises of large versus compact panels, helping you choose a size that truly fits - Solar panel size is the key metric of every installation. These panels generally weigh more than 50 pounds and have a 6 x 12 grid. The most commonly used cell layouts are 60-cell, 72-cell, and 96-cell panels.



Solar photovoltaic panel model size

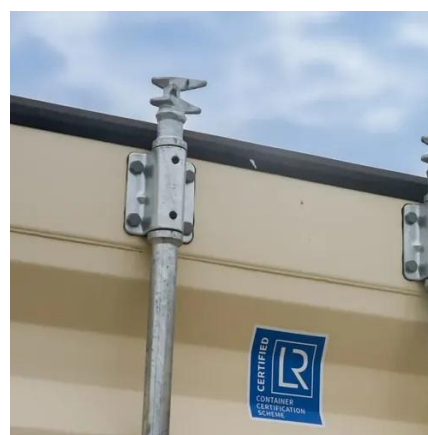


Solar Panel Size: 2026 Detailed Guide

In this article, we will discuss all the important aspects of solar panel size. This guide will help you select the right solar panel size through detailed calculations.

[Photovoltaic Panel Models, Specifications, and Dimensions: A](#)

Solar energy professionals, installers, and procurement managers need precise data to select the right photovoltaic (PV) panels. This guide dives into critical factors like model variations, technical ...



[Solar Panel Size & Dimensions Guide 2025, Complete Specs](#)

Complete guide to solar panel sizes and dimensions. Compare 60-cell vs 72-cell panels, weights, roof space requirements, and installation specs for 2025.

Complete Guide to Solar Panel Size

60-cell solar panels are the standard solar panel size for homes. They are usually 5.5 feet by 3 feet and weigh around 40 pounds. 72-cell panels are bigger, measuring around 6.5 feet by 3 feet, weigh ...

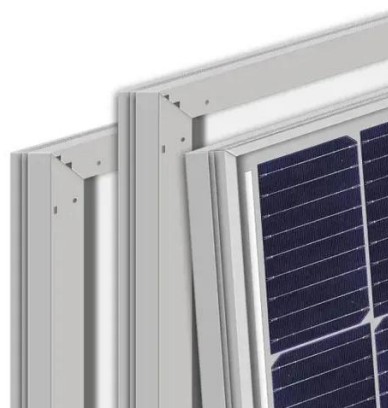


[Solar Panel Size Guide , Best Panel Size for Your Roof](#)

Solar cells are assembled in grids, and the most common configurations are 60-cell panels for residential use and 72-cell panels for commercial or utility use. A 60-cell panel (often seen on ...

[standard solar photovoltaic panel sizes explained](#)

Discover standard solar photovoltaic panel sizes. Choose the perfect fit for your installation with our expert guide. Learn more today!



[Standard Solar Panel Sizes And Wattages \(100W-500W Dimensions\)](#)

To bridge that gap of very useful knowledge needed, we have compared and averaged the sizes of 100-watt to 500-watt solar panels available on the market. The goal here is to get to the average solar ...



[Solar Panel Sizes \(Energy Use & Dimensions Guide\)](#)



There are two common configurations, namely the 60-solar cell and the 72-solar cell per panel configuration. A 60-cell model is what's used in a 6 by 10 grid, while a 72-cell panel on a 6 by ...



What Are the Common Solar Panel Sizes?

Still, most 60-cell solar panels have a size of 39" X 66" and most 72-cell solar panels have sizes of around 39" X 77". However, panels with cell counts of 96, 120, and 144 may have different ...

[Detailed Guide to Solar Panel Size & Dimensions](#)

Choosing the proper system is not only about the solar panel dimensions. You should also consider wattage, number of cells, layout possibilities, and energy consumption. Also, your ...





Contact Us

For catalog requests, pricing, or partnerships, please visit:

<https://iwap.com.pl>

Phone: +34 919 456 782

Email: info@iwap.com.pl

Scan the QR code to access our WhatsApp.

