



Solar panel installed on the roof size





Overview

The size of a solar panel is mainly determined by the number of cells, encapsulation method, and power rating. Currently, the most common monocrystalline modules on the market measure between 1. Installing solar panels starts with one basic question: Do they actually fit on your roof?

A roof solar calculator helps you estimate panel placement using roof size and panel dimensions. This guide explains the idea in plain words, with examples that anyone can follow — even if maths is not your. In the design and installation of photovoltaic systems, calculating rooftop solar panel dimensions is a critical factor that determines the success of a project. With limited roof space, inaccurate measurement and planning may result in insufficient installed capacity, wasted space, and an extended. Most Michigan properties, residential or commercial, need roughly 250 to 500 or more square feet of usable roof space for solar, but vary heavily depending on system size and goals. Roof layout, orientation, and shading often matter as much as total square footage. This guide explains typical panel dimensions, how to estimate system size, and practical steps for homeowners in the United States to plan a solar installation that fits.



Solar panel installed on the roof size

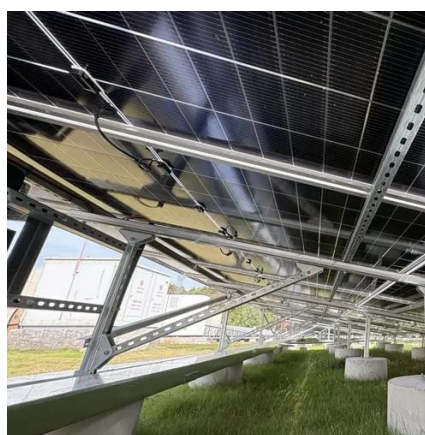


Solar Panels for Roofs

It calculates the maximum number of panels that fit on the available roof surface, taking into account important factors such as orientation, inclination, and panel type. It's important to note that this ...

[Roof Solar Panel Size: How to Choose and Calculate Panel Footprint](#)

This guide explains typical panel dimensions, how to estimate system size, and practical steps for homeowners in the United States to plan a solar installation that fits their roof and meets ...



[How Many Solar Panels Will Fit on My Roof \(Easy Guide\)](#)

Learn how a "How Many Solar Panels Will Fit on My Roof" calculator works. Simple examples, clear steps, and no confusing math. Perfect for beginners.



[Rooftop Solar Panel Size and Layout Guide](#)

This article, based on practical case studies and calculation formulas, analyzes solar panel dimensions, spacing, and rooftop assessment methods to help distributors and users select ...



[Roof Solar Panel Size Guide for Homeowners](#)

Choosing the right roof solar panel size affects energy output, cost, and roof layout. This guide explains typical panel dimensions, how to calculate required roof area, and design ...



[How Much Roof Space Do I Need for Solar Panels?](#)

Solar panels can work on far more properties than most people expect, but roof space is still one of the first questions to answer. Whether you own a home, manage a commercial building, or ...



[Solar Panel Size & Dimensions Guide 2025 . Complete Specs](#)

Complete guide to solar panel sizes and dimensions. Compare 60-cell vs 72-cell panels, weights, roof space requirements, and installation specs for 2025.



[How much area is needed for solar panel installation](#)



To help you decide if your property is suitable for solar, this guide outlines roof space requirements and breaks down how to calculate the area needed for your home solar panel installation.

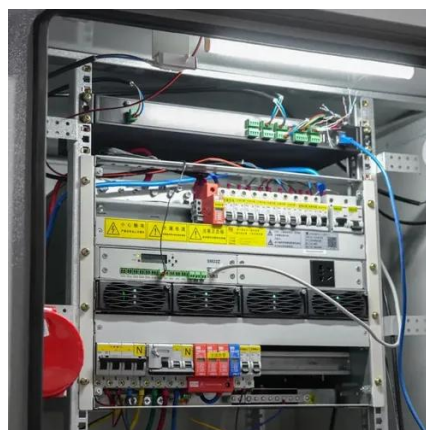


Roof Space Requirements For Solar Panels

Each square foot of roof space generates approximately 15 watts of solar power. Standard solar panels measure 17.5 square feet (65 inches by 39 inches), meaning a typical installation ranges from 315 to ...

[The Complete Guide To Rooftop Solar Mounting \[2025\]](#)

We'll go through all the details you need to know, from the size and pitch of your roof surface to the type of solar panel and the installation mechanism. By the time we're done, you'll have ...





Contact Us

For catalog requests, pricing, or partnerships, please visit:

<https://iwap.com.pl>

Phone: +34 919 456 782

Email: info@iwap.com.pl

Scan the QR code to access our WhatsApp.

