



Solar inverter scan code





Solar inverter scan code



[Understanding Inverter Fault Codes: A Complete Guide for Solar](#)

Learn how inverter fault codes affect performance, safety, and output. This practical guide explains causes, fixes, and prevention for solar systems today.

NEP Barcode Scanner

Simplify solar system setup with the NEP USB Barcode Scanner. Easily scan and enter serial numbers for inverters and modules via the gateway's USB port. Perfect for quick and accurate solar system ...

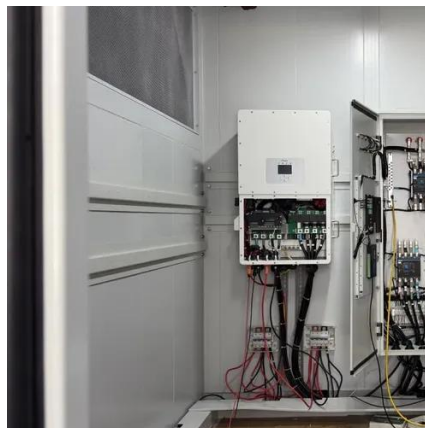


[Commissioning and monitoring PV systems , SMA 360°](#)

The SMA 360° app offers everything you need for quickly and easily commissioning the SMA inverter or SMA Energy System. Simply scan the QR code to establish a connection with the SMA inverter. It ...

How To Look Up My Solar Edge Inverter

To track the inverter's performance in real-time, users can download the app, enter the inverter serial number, and learn the warranty expiration date. The Solaredge Monitoring Portal is a ...



FusionSolar App Quick Guide

Note: Before commissioning a commercial inverter, connect the 4G Smart Dongle to identify parameters. If the indicator status is normal, remove the Smart Dongle, and then connect the USB-WLAN adapter ...



Connecting to Tesla Solar Inverter

Using a smartphone, scan the QR code on the back of your Tesla Solar Inverter Owner's Guide to join the Tesla Solar Inverter's Wi-Fi network. Sign in to the configuration interface by entering the email ...



mySolarEdge App

This code can be found on the QR code sticker located on one of the sides of the inverter. If you are connecting to the inverter used last, tap continue with last scanned QR code instead of rescanning ...

[Connect Your Tesla Solar Inverter to the Internet](#)



Select "Scan QR Code", and the app will connect to your inverter. Note: if you receive an "unable to join" error, try turning off your Solar circuit breaker, wait 5 minutes, and turn it back on.



[Connect Your Solar Edge System to the Monitoring App](#)

Once the inverter is successfully connected to your home Wi-Fi network, the app should display a confirmation message or status change. You can also test the connection by navigating away from ...

Verifying Inverter Status

You can connect to your inverter by scanning the barcode with your phone's camera. If you are connecting to a previously used inverter, click "continue with the last scanned QR code" instead of ...





Contact Us

For catalog requests, pricing, or partnerships, please visit:

<https://iwap.com.pl>

Phone: +34 919 456 782

Email: info@iwap.com.pl

Scan the QR code to access our WhatsApp.

