



Solar cells generate electricity per square meter





Overview

Solar energy generation per square meter can vary significantly, but typical values indicate that 1 square meter of solar panels can produce between 150 to 400 watts of electricity under optimal conditions. But "ideal" rarely exists in real life. This. Measuring solar energy per square meter helps evaluate electricity generation capabilities and is crucial for assessing solar panels' effectiveness and solar farms' ability to harness sunlight and reduce fossil fuel dependence, which contributes to climate change. That typically works out to about 36-75 kWh per month per panel, depending on sunlight, orientation, and the efficiency of solar panels. On a clear day, each square metre of the Earth's surface receives approximately 1,000 watts of solar energy, also known as 1 kW/m². Factors influencing energy.



Solar cells generate electricity per square meter



[How much does solar energy generate per square meter?](#)

Solar energy generation per square meter can vary significantly, but typical values indicate that 1 square meter of solar panels can produce between 150 to 400 watts of electricity under optimal ...

Solar Power Per Square Meter Calculator

Calculate solar panel energy output per square meter. Get accurate daily, monthly, and annual production estimates based on location, panel specs, and system losses.



[Solar Energy Generation Per Square Metre: A Complete Guide](#)

How much electricity can solar panels generate per square metre? Most solar panels generate 150-220 watts per square metre, depending on efficiency and conditions.



Solar Panel Output Per Square Meter

Discover how much electricity solar panels generate per square meter, explore efficiency factors, technology comparisons, and future innovations in photovoltaic energy.



Solar Panels Watts per Square Meter

Solar panels produce electricity when sunlight is exposed; the watts per square meter metric helps us quantify this energy conversion. It allows us to gauge the effectiveness of a solar ...

[How Much Energy Does a Solar Panel Produce: Output Explained](#)

The short answer: most modern solar panels produce between 1.2 and 2.5 kilowatt-hours (kWh) of energy per day per panel under real-world conditions. That typically works out to about ...



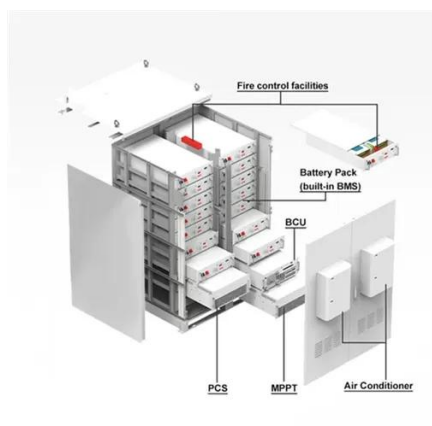
[How Much Power Does 1 Square Meter of Photovoltaic Panels ...](#)

Solar energy is reshaping how we power homes and businesses, but many wonder: how much electricity can a single square meter of photovoltaic panels realistically produce each year? Let's ...

[Solar Energy Per Square Meter: How Much Power Can You Get?](#)



This article explores solar energy per square meter and the various factors that influence energy output, such as location, climate, and panel efficiency. It provides crucial calculations, ...

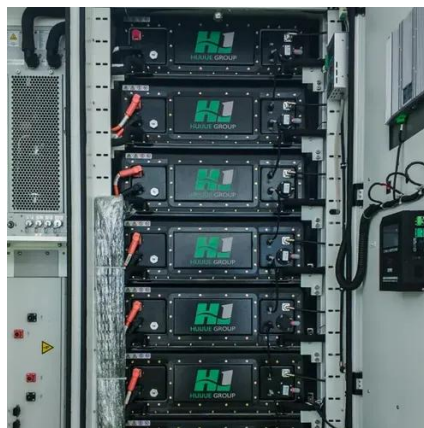


Solar Power per Square Meter Calculator

A solar power per square meter calculator takes details regarding these factors and then gives the accurate output generated by the solar panel per square meter.

[Solar Panel Watts Per Square Meter Explained](#)

To measure this efficiency, use solar panel Watts per square meter (W/m). This metric shows how much power a solar panel produces per square meter of surface area under standard conditions.





Contact Us

For catalog requests, pricing, or partnerships, please visit:

<https://iwap.com.pl>

Phone: +34 919 456 782

Email: info@iwap.com.pl

Scan the QR code to access our WhatsApp.

