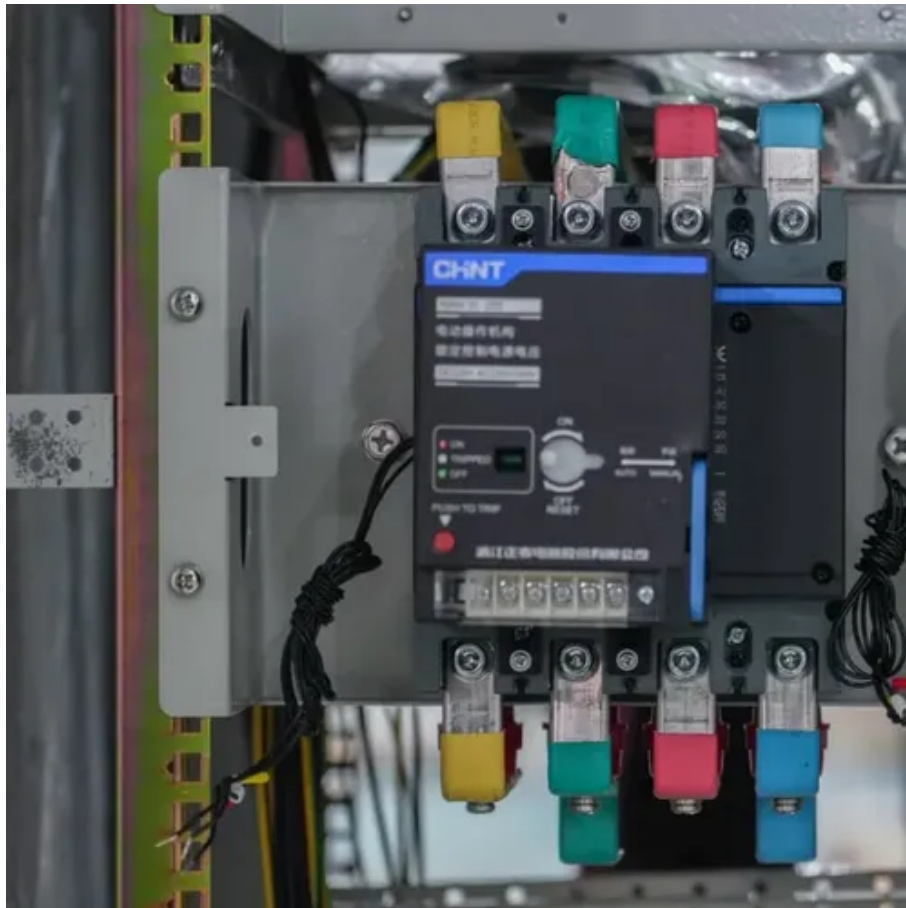




Solar base station lead-acid battery construction is divided into





Overview

The construction is simple yet robust. The main parts include: Container – Made of polypropylene or hard rubber to resist acid corrosion. Separators – Microporous PVC or glass fiber mats that prevent short circuits while allowing. Example: The standard car battery is a 12V lead acid battery designed to deliver a large burst of current to start the engine. These are arranged in groups to. In this chapter the solar photovoltaic system designer can obtain a brief summary of the electrochemical reactions in an operating lead-acid battery, various construction types, operating characteristics, design and operating procedures controlling life of the battery, and maintenance and safety. Lead Acid Battery Definition: A lead acid battery is defined as a rechargeable battery that uses lead and sulfuric acid to store and release electrical energy. The lead acid battery is most commonly used in the power stations and substations because it has higher cell volt are shown below. The container stores chemical energy which is converted into electrical. A lead-acid battery has three main parts: the negative electrode (anode) made of lead, the positive electrode (cathode) made of lead dioxide, and an electrolyte of aqueous sulfuric acid. When several battery cells are joined.



Solar base station lead-acid battery construction is divided into



[Lead Acid Battery: Construction, Working, Diagram & Reactions](#)

By combining energy requirements, voltage, Depth of Discharge, and efficiency margin, you can accurately size a lead acid battery for solar setups, UPS systems, or other backup power applications.

[Lead-acid battery construction, chemistry and application](#)

There are many different batteries currently in production in the world. Lead-acid batteries can be first described by type or construction: Sealed Valve Regulated or Starved Electrolyte batteries.



[Lead acid battery, Construction and, Working, and Charging](#)

During the cell charging the lead sulfate is converted back into lead peroxide, lead, and sulfuric acid. The average terminal voltage of the lead-acid battery is approximately 2.2V. The ...

[Construction plan of lead-acid battery for solar base station](#)

Lead acid battery is a type of rechargeable battery that uses lead plates and sulphuric acid to store and produce electrical energy. It works through a chemical reaction between the lead and electrolyte, ...



Construction of Lead Acid Battery

Construction of Lead Acid Battery are shown below. The container and the plates are the main part of the lead acid battery. The container stores chemical energy which is converted into electrical energy ...



[What is Lead Acid Battery? Construction, Working, Discharging](#)

Container - The container of the lead acid battery is made of glass, lead lined wood, ebonite, the hard rubber or bituminous compound, ceramic materials or moulded plastics and are seated at the top to ...



[HANDBOOK OF SECONDARY STORAGE BATTERIES CHAP ...](#)

In a lead-acid cell the active materials are lead dioxide (PbO_2) in the positive plate, sponge lead (Pb) in the negative plate, and a solution of sulfuric acid (H_2SO_4) in water as the electrolyte.



Lead Acid Battery



Construction of Lead Acid Battery are shown below. The container and the plates are the main part of the lead acid battery. The container stores chemical energy which is converted into electrical energy ...

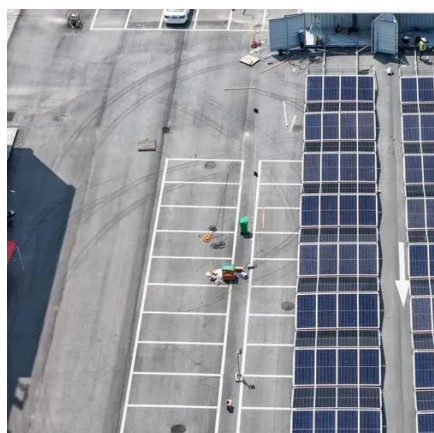
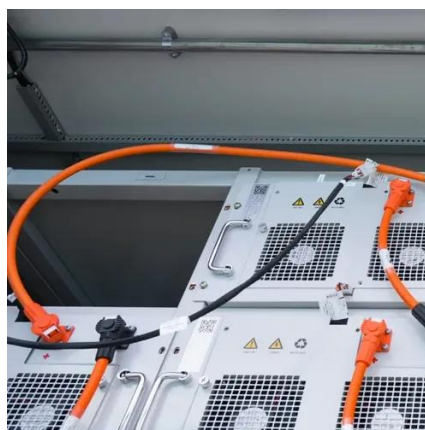


[Lead Acid Battery , Construction, Working and Application](#)

When the lead plates are placed in the acid, a chemical reaction takes place, which produces electricity. This process can be reversed to recharge the battery. When several battery ...

[Lead Acid Battery: What's Inside, Components, Construction, and ...](#)

A lead-acid battery has three main parts: the negative electrode (anode) made of lead, the positive electrode (cathode) made of lead dioxide, and an electrolyte of aqueous sulfuric acid. The ...



Construction of Lead Acid Battery

The main feature of construction of lead acid battery is to accommodate a large volume of active materials i.e. PbO_2 in active plate. Positive plates are usually produced by Plante Process ...



Contact Us

For catalog requests, pricing, or partnerships, please visit:

<https://iwap.com.pl>

Phone: +34 919 456 782

Email: info@iwap.com.pl

Scan the QR code to access our WhatsApp.

