



Solar Photovoltaic Panel Fault Code





Overview

These fault codes help to identify and troubleshoot problems that may occur with the inverter, grid connection, or other components of your solar system. If your SolarEdge inverter isn't producing power or is flashing unusual alerts, the first clue is often in its lights or display. A SolarEdge green light blinking typically means the system is generating power, but when the green light disappears or a red light appears, you may see unfamiliar. Presence of ground faults in PV systems may result in hazardous voltages or currents on normally grounded conductors or exposed metal elements. Extreme caution must be used when troubleshooting PV systems with ground faults. Follow this path to fix it: Advanced Settings > External EPM Set > Fail Safe Set > Change ON to OFF and then press Enter. It shows how grid conditions, voltage behaviour, and internal inverter limits interact, and why understanding that context matters. If your SolarEdge inverter lights indicate a fault, we've tried to include absolutely everything you need to know. SolarEdge inverters – like most other inverters – use specific error codes to pinpoint problems.



Solar Photovoltaic Panel Fault Code

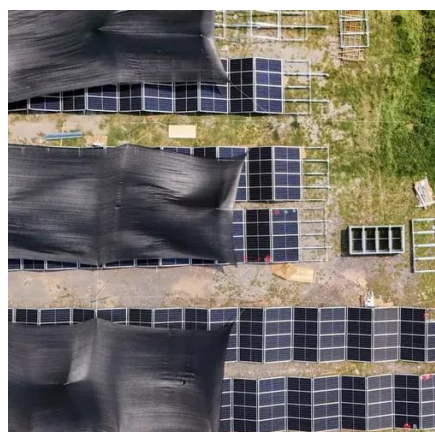


[How to Reset a Solar Inverter Fault: Decoding Inverter Fault Codes](#)

Many solar inverters display fault codes or solar inverter error codes to help identify the cause. These codes are useful when diagnosing the problem or resetting the inverter. Solar panels ...

[SolarEdge Inverter Error Codes - Your Troubleshooting Guide](#)

Seeing a flashing code? What to do you - panic? Definitely don't do that, because not all SolarEdge inverter problems require an expert at all! Some can be fixed with simple troubleshooting. ...



Inverter Error Codes

This page outlines the possible meanings of common fault codes across a range of inverter brands used in Australia. Understanding these codes may help you to diagnose and address your solar system ...

[SolarEdge Error Codes & Fault Codes: Troubleshooting Guide](#)

In this guide, we'll explain the most common SolarEdge error codes, what a blinking green light really indicates, when to try a reset, and when to contact SolarEdge customer service or a ...



[Solar Inverter Error Codes Explained: DIY Diagnosis and Solutions](#)

Discover the most common solar inverter error codes and their meanings to swiftly identify potential system hiccups. Learn how to effectively troubleshoot overvoltage issues indicated by Error ...



Solar Inverter Fault Codes And Solutions

Check whether the actual voltage value of the battery is lower than the setting value of 14 parameters. If the voltage is lower than the 14th parameter value, please charge the battery, and when the battery ...



[Common Inverter Faults and Solar Panel Error Codes](#)

This article explains common inverter faults and solar panel error codes by looking at what is happening across the solar system, not just what the error message says.



[SolarEdge Isolation Fault Troubleshooting](#)



The next sections describe how to identify the source of an isolation fault if Error 2x19 or 8x58 is displayed. You can troubleshoot the isolation fault using the Inverter diagnostics screen in the LCD ...



Solis Inverter Alarm Codes (Complete List)

In this article, we will provide a comprehensive explanation for all messages generated by Solis inverters, ranging from operating messages to alarm messages. We'll not only decipher what ...

[Common Fault Diagnosis and Maintenance Guide for PV Systems ...](#)

This article will introduce common types of failures in PV systems along with their diagnosis and maintenance methods, helping users improve system efficiency and extend its lifespan.





Contact Us

For catalog requests, pricing, or partnerships, please visit:

<https://iwap.com.pl>

Phone: +34 919 456 782

Email: info@iwap.com.pl

Scan the QR code to access our WhatsApp.

