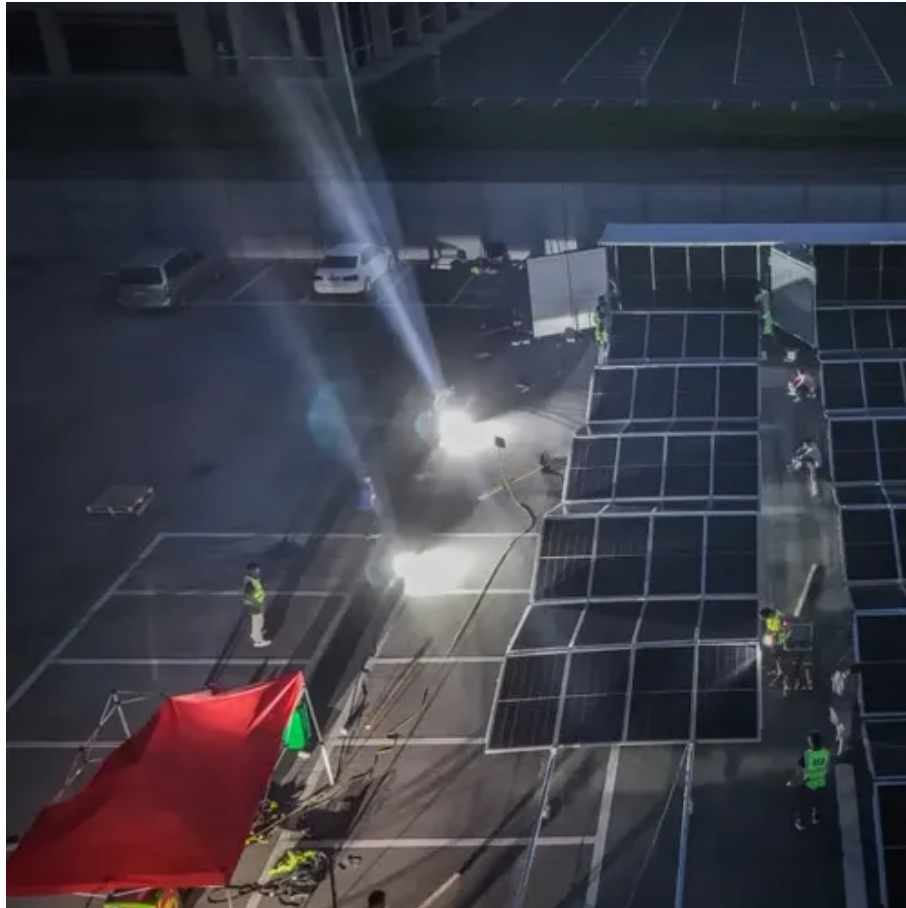




# Small wind farms generate uniform power





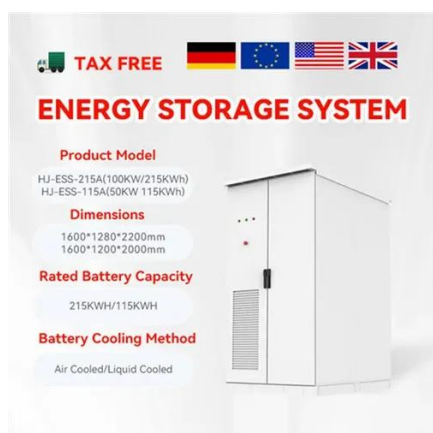
## Overview

---

The size of a turbine and the speed of the wind determine how much electricity (power) a wind energy system will produce. A small wind energy system has a power output from 400 watts to 100 kilowatts (kW). A typical home uses approximately 10,649 kilowatt-hours (kWh), an. Harnessing the wind to make electricity and meet at least a portion of your power needs provides immediate and long-term environmental and financial benefits. Yet, smaller wind solutions can play a very important role in the clean energy transition. The Big Catch: They are NOT practical for most homes. As energy demands on farms grow, with needs like irrigation, refrigeration, and machinery operation.



## Small wind farms generate uniform power



### [Small Scale Wind Power for Homes, Farms and Communities](#)

Small wind turbines have less generating capacity than the huge commercial turbines found on wind farms, but their reduced costs and added versatility allow wind power to be used in a wider set of ...

### [Small Wind Can Bring Big Benefits to Communities in Need](#)

Small wind turbines can offer affordable, reliable power to homes, schools and health centers in communities and rural and agricultural areas that other renewable technologies can't reach.



### [Small Wind Electric Systems: A Virginia Consumer's Guide](#)

Wind turbines convert the kinetic energy in wind into mechanical power that runs a generator to produce clean electricity. Today's turbines are versatile modular sources of electricity. Their blades are ...

### [Home Wind Turbine Overview 2026 Guide to Small Wind Power](#)

Thinking about a small wind turbine? Our 2026 guide covers the cost, requirements, and how they compare to solar panels + battery storage for your home.



### [Consumer Guide to Small Wind Energy Systems](#)

The size of a turbine and the speed of the wind determine how much electricity (power) a wind energy system will produce. A small wind energy system has a power output from 400 watts to 100 kilowatts ...

### **Wind Energy Factsheet**

Horizontal axis wind turbines (HAWT) are the predominant design, featuring blades (usually three) symmetrically mounted to a hub connected via a shaft to a gearbox and generator.



### [How Small Wind Turbines Generate Electricity?](#)

In the design of small wind turbines, the rotating blades convert natural wind power into rotating kinetic energy through aerodynamic principles. This kinetic energy can be turned by the shaft of the turbine ...



### **E3A Small Wind: Understand Small Wind**



People learning about wind might think a one- or two-mile per hour change in wind speed is negligible, but a small change in wind speed makes a big difference in the level of power production.



### **Small Wind Turbines for Farms**

Farmers across the world are discovering that small wind turbines can do more than just lower energy costs--they can also make farms more sustainable, resilient, and independent from the ...

### [Small-Scale Wind Energy on the Farm - ATTRA - Sustainable ...](#)

In some situations, wind-generated electricity can help farmers and ranchers reduce their energy costs. This publication introduces small-scale wind energy to help farmers and ranchers decide whether ...





## Contact Us

---

For catalog requests, pricing, or partnerships, please visit:

<https://iwap.com.pl>

Phone: +34 919 456 782

Email: [info@iwap.com.pl](mailto:info@iwap.com.pl)

Scan the QR code to access our WhatsApp.

