



Slovakia Communication solar Base Station Planning





Overview

The paper proposes a novel planning approach for optimal sizing of standalone photovoltaic-wind-diesel-battery power supply for mobile telephony base stations. The approach is based on integration of a compr. [pdf]. Due to the widespread installation of Base Stations, the power consumption of cellular communication is increasing rapidly (BSs). A typical power consumption for each equipment at site has been provided by Airtel company, in order for us to use it. A communication base station refers to a low-power wireless antenna tower that communicates with users' mobile phones. First deployed in 2019, its technical standards are developed by the (3GPP) in cooperation with the.



Slovakia Communication solar Base Station Planning



[COMMUNICATION BASE STATION ENERGY SOLUTIONS , SCCD ...](#)

In the context of external land surveying, a base station is a receiver at an accurately-known fixed location which is used to derive correction information for nearby portable GPS receivers.

[Telecom Base Station PV Power Generation System Solution](#)

Install solar panels outdoors and add equipment such as MPPT solar controllers in the computer room. The power generated by solar energy is used by the DC load of the base station computer room.



CHASING THE WIND IN SLOVAKIA

The global solar storage container market is experiencing explosive growth, with demand increasing by over 200% in the past two years. Pre-fabricated containerized solutions now account for ...

[Creating pathways toward secure and climate neutral energy system](#)

This paper aims to demonstrate how reducing or increasing solar, wind power, and biomass (the most promising renewables) in the Slovak Republic's 2030, 2040 and 2050 energy ...

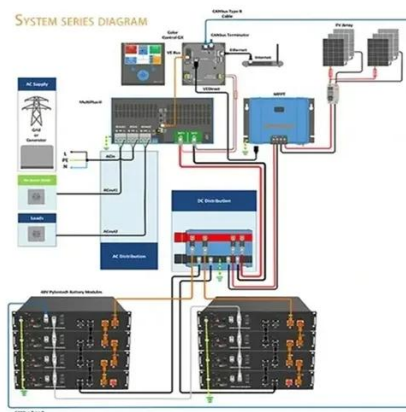


4.25 Slovakia

(GSMA Europe: Extract from Base Station Planning Permission In Europe, July 2012.)

Slovak Communication Base Station Management

As a provider of communication base station solutions in Slovakia, the client company must establish a scientific and reasonable management method to achieve timely management of the station ...



OUR CASE SLOVAK COMMUNICATION BASE STATION ...

The base station power cabinet is a key equipment ensuring continuous power supply to base station devices, with LLVD (Load Low Voltage Disconnect) and BLVD (Battery Low Voltage Disconnect) ...

Slovak Communication Base Station Management

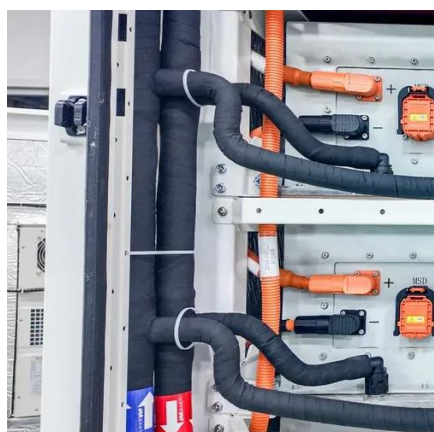


A communication base station refers to a low-power wireless antenna tower that communicates with users' mobile phones. The base station includes various devices for wireless communication, power ...



[Slovakia 5G communication base station photovoltaic power ...](#)

Access to the 5G base station microgrid photovoltaic storage system based on the energy sharing strategy has a significant effect on improving the utilization rate of the photovoltaics and improving ...





Contact Us

For catalog requests, pricing, or partnerships, please visit:

<https://iwap.com.pl>

Phone: +34 919 456 782

Email: info@iwap.com.pl

Scan the QR code to access our WhatsApp.

