



Slope of solar photovoltaic panel installation





Overview

The appropriate slope for solar panels is typically between 30 to 45 degrees, but it can vary depending on latitude, desired energy efficiency, and local climate conditions. The angle of installation plays a critical role in optimizing the sunlight absorption throughout the year. This guide explains how roof pitch, geographic location, seasonal sun angles, and mounting strategies determine the ideal tilt for photovoltaic (PV) systems in the United States. The average roof slope can range between 30° and 40°. Maximize solar energy efficiency with expert insights on solar panel placement. This refers to how the inclination of the ground influences the positioning and performance of the panels.



Slope of solar photovoltaic panel installation

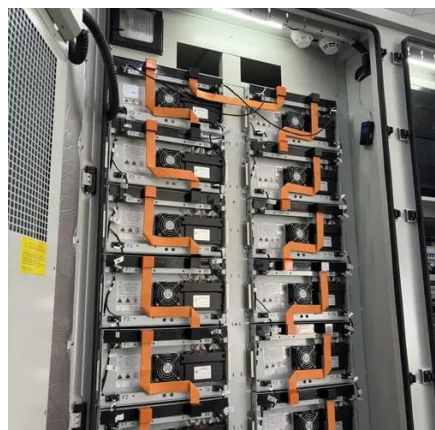


[Solar panel inclination angle, location and orientation](#)

Optimization of the inclination, orientation and location of photovoltaic solar panels and solar collectors in a solar installation to maximize the use of renewable energy.

[Best Roof Slope for Solar Panels: Optimal Angles and Practical](#)

Choosing the right roof slope for solar panels affects energy production, installation cost, and long-term performance. This guide explains how roof pitch, geographic location, seasonal sun ...



[What is the appropriate slope for solar panels? . NenPower](#)

The appropriate slope for solar panels is typically between 30 to 45 degrees, but it can vary depending on latitude, desired energy efficiency, and local climate conditions. The angle of ...

[Roof Pitch for Solar Panels: Best Angles for Maximum Efficiency](#)

Discover the best roof pitch for solar panels to maximize efficiency. Learn how angles impact energy production and optimize your solar setup.



[What Is the Maximum Slope for a Solar Farm?](#)

Optimal Conditions: Flat or gently sloped land (up to 5 degrees) is preferred for ease of installation and maintenance. Single-Axis Trackers: These systems, which follow the sun's path to ...



[Minimum Roof Pitch for Solar Panels: A Practical Guide](#)

Key takeaway: For most homes, a minimum slope around 2:12 to 3:12 balances drainage, installer flexibility, and module efficiency. Higher pitches improve snow shedding and maintenance ...



Slope Solar 101: Key Requirements for Installing Photovoltaic Panels ...

With global solar capacity projected to triple by 2030, engineers are increasingly eyeing slopes for PV installations. But here's the kicker: slopes aren't just angled surfaces - they're dynamic ...



Roof Pitch for Solar Panels Calculator



For most residential properties, a roof with a slope between 30° and 40° is considered optimal for solar panel installation. This angle allows solar panels to lie flat against the roof without requiring additional ...

- LiFePO₄ Battery, safety
- Wide temperature: -20-55°C
- Modular design, easy to expand
- The heating function is optional
- Intelligent BMS
- Cycle Life: > 6000
- Warranty: 10 years



Photovoltaic panel installation slope

When considering a solar panel installation, you'll want to prioritize solar panel direction over angle. While having the optimal tilt can improve output by 5-8% 4, orienting your system southward can ...



Base Slope

Base slope effect describes the phenomenon observed in solar panels that are installed on sloping terrain. This refers to how the inclination of the ground influences the positioning and performance of ...





Contact Us

For catalog requests, pricing, or partnerships, please visit:

<https://iwap.com.pl>

Phone: +34 919 456 782

Email: info@iwap.com.pl

Scan the QR code to access our WhatsApp.

