



Replacing square tubes of photovoltaic panels in power stations





Overview

Replacing tubes on solar panels involves several critical steps: 1) Prepare necessary tools and safety equipment, 2) Disconnect the solar panel from the power source, 3) Carefully remove the damaged tubes, 4) Install new tubes ensuring a secure fit, 5). Replacing tubes on solar panels involves several critical steps: 1) Prepare necessary tools and safety equipment, 2) Disconnect the solar panel from the power source, 3) Carefully remove the damaged tubes, 4) Install new tubes ensuring a secure fit, 5). Replacing tubes on solar panels involves several critical steps: 1) Prepare necessary tools and safety equipment, 2) Disconnect the solar panel from the power source, 3) Carefully remove the damaged tubes, 4) Install new tubes ensuring a secure fit, 5) Reconnect the solar panel, 6) Test. ng solar energy as effectively as the newer models. Replacing or upgrading to a more advanced model can th s translate to m which is a sign of their quality and robust nature. As th solar installation is approximately 20 square feet. Solar experts' robust torque tube design can also distribute mechanical loads. Torque tube is a critical structural component, especially for single-axis solar trackers. Torque tubes are typically circular, square, pentagonal, octagonal, or D in shape and coated with galvanizing. safety measures must be adhered to during the replacement process, 3. The basic is to position the bracket to capture the panel and then ti hten the bolt that clamps the bracket to the lling the bracket is to better fix.



Replacing square tubes of photovoltaic panels in power stations



Fix photovoltaic panels and square tubes

Acting as drive shafts, torque tubes enable the precise control of the angularity of solar panels to maximize energy capture by aligning with the sun's movement throughout the day.

[How to Replace Solar Tubes and Wires , NenPower](#)

Choosing the right replacement solar tubes involves several factors. Begin by considering the efficiency ratings of potential tubes, which inform you about the energy they can generate based ...



2MW / 5MWh
Customizable

[How to replace the tube when solar panel is sealed , NenPower](#)

Understanding the structure of solar panels offers insight into potential issues, while adeptness in identifying damage is paramount for effective repairs. Preparation entails gathering high ...



[How to install square tube and photovoltaic bracket](#)

Follow along with the essential steps of photovoltaic systems installation, from mounting solar modules and connecting to the grid, to commissioning and regular maintenance for optimal



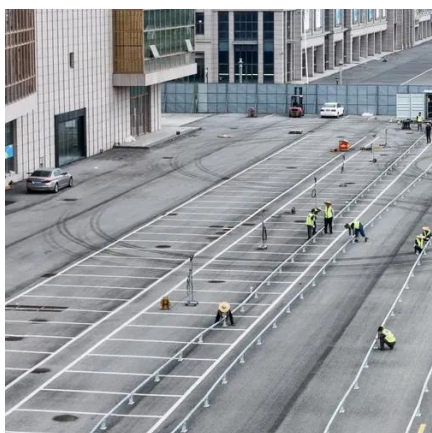
[Photovoltaic panel installation square tube](#)

However, a general guideline is to use one 10-inch solar tube for every 150 to 200 square feet of space and one 14-inch solar tube for every 200 to 300 square feet.



[Replacement of square tubes for photovoltaic panels](#)

A typical 4kW solar panel system for 2-3 bedroom houses costs & #163;5,000 - & #163;6,000 with installation. Added together, the total cost of solar panels and a battery in the UK is & #163;13,000 ...



[How to replace the tubes on the solar panel](#), [NenPower](#)

10 Most Common Solar Panel Repairs

Repairing a solar panel diode typically involves identifying the faulty diode, removing it from the circuit, and replacing it with a new one. This task requires technical expertise and should ...



In summary, replacing tubes on a solar panel is a multifaceted process that requires attention to detail, safety preparations, and thorough testing to ensure functionality.



[Torque Tubes for Solar Trackers and Panel Systems](#)

S& P Steel supplies square and octagonal torque tubes for the construction of solar panel mounting systems and supporting structures.



Contact Us

For catalog requests, pricing, or partnerships, please visit:

<https://iwap.com.pl>

Phone: +34 919 456 782

Email: info@iwap.com.pl

Scan the QR code to access our WhatsApp.

