



Proportion of wind power generation in 2025





Proportion of wind power generation in 2025



[America's Electricity Generation Capacity, 2025 Update](#)

Current Capacity The largest fuel source is natural gas, accounting for just under 43% of all generation capacity. Coal, with a share of 15%, represents the second largest source of generation capacity. ...

[Share of electricity production from wind, 2025](#)

This dataset contains yearly electricity generation, capacity, emissions, import and demand data for over 200 geographies. You can find more about Ember's methodology in this ...



Solar and wind to lead growth of U.S. power generation for the next ...

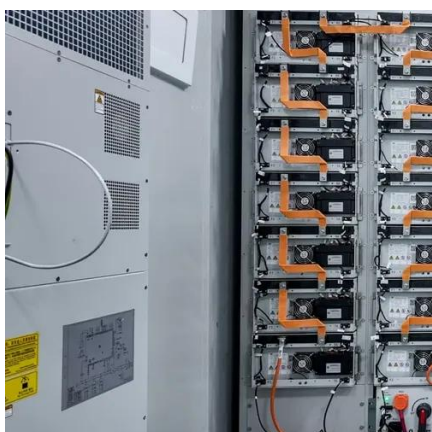
As a result of new solar projects coming on line this year, we forecast that U.S. solar power generation will grow 75% from 163 billion kilowatthours (kWh) in 2023 to 286 billion kWh in ...

Renewable energy statistics 2025

Data on renewable power capacity represents the maximum net generating capacity of power plants and other installations that use renewable energy sources to produce electricity.



50KW modular power converter



Global wind power growth accelerates in first half of 2025

By the end of June 2025, total installed capacity reached 1,245 GW (1.25 TW), representing an annual growth rate of 13.5%, with wind supplying around 12% of global electricity ...

Solar and wind are covering all new power demand in ...

Solar and wind growth met all new power demand in 2025, pushing fossil generation to stall for the first time since the pandemic.



US Wind Energy Monitor , Q2 2025 , ACP

Q1 2025 wind installations more than doubled compared to the same period last year, but regulatory uncertainty drove turbine orders down 50% in the first half of 2025--reaching their lowest level since ...

U.S. Wind Power 2025: Capacity, IRA, Renewable Growth



According to data from the Federal Energy Regulatory Commission (FERC), wind energy accounted for 30.1% of the new electricity capacity added in January 2025, and as the most-used renewable ...



[WWEA Half-year Report 2025: Global Wind Power Growth ...](#)

By the end of 2025, global cumulative wind capacity is projected to exceed 1'320 GW, sufficient to generate around 12% of the world's electricity. Country Highlights

[Global Electricity Mid-Year Insights 2025 , Ember](#)

Global electricity demand grew by 2.6% (+369 TWh) in the first half of 2025. This increase was more than met by increases in solar (+306 TWh, +31%) and wind (+97 TWh, +7.7%) generation, ...





Contact Us

For catalog requests, pricing, or partnerships, please visit:

<https://iwap.com.pl>

Phone: +34 919 456 782

Email: info@iwap.com.pl

Scan the QR code to access our WhatsApp.

