



Principle of power transmission of solar power station





Overview

Converts DC electricity from solar panels into alternating current (AC) for grid compatibility. Steps up the AC voltage to meet the power grid's requirements for efficient transmission. Definition of Solar Power Plants: Solar power plants generate electricity using solar energy, classified into photovoltaic (PV) and concentrated solar power (CSP) plants. Below, you can find resources and information on the. Solar energy is transmitted through a combination of methods that allow for the efficient capture, conversion, and distribution of sunlight into usable power. Without them, light energy cannot be converted into electricity.



Principle of power transmission of solar power station



[The Working Mechanism of Solar Power Generation Systems](#)

Learn the detailed working mechanism of solar power generation systems, converting sunlight into clean, renewable electricity.

[How Does a Solar Farm Connect to the Power Grid?](#)

Once the electricity has been converted, it is transformed by transformers so that it can be fed into the power grid. This power is then fed into transmission lines that take the energy to ...



Solar Power Plant Diagram: Key Components

In this blog, we'll walk through the working principle of a solar power plant, break down its core parts, and explain how electricity flows from the sun to your socket.

[Principle of solar power station power generation](#)

A solar power plant is a facility that converts solar radiation, made up of light, heat, and ultraviolet radiation, into electricity suitable to be supplied to homes and industries.



Solar Power Station

This thermal power triggers Rankine, Brayton or Sterling cycles and finally, mechanical energy is converted into electricity through an electric generator which is further injected into the transmission ...



Solar Power Plants: Types, Components and Working Principles

Photovoltaic power plants convert sunlight directly into electricity using solar cells, while concentrated solar power plants use mirrors or lenses to concentrate sunlight and heat a fluid that ...



114KWh ESS



How Does Solar Work?

When the sun shines onto a solar panel, energy from the sunlight is absorbed by the PV cells in the panel. This energy creates electrical charges that move in response to an internal electrical field in ...

What is Solar Power Plant? Definition, Components, Working, ...



Converts DC electricity from solar panels into alternating current (AC) for grid compatibility. Steps up the AC voltage to meet the power grid's requirements for efficient ...



ESS

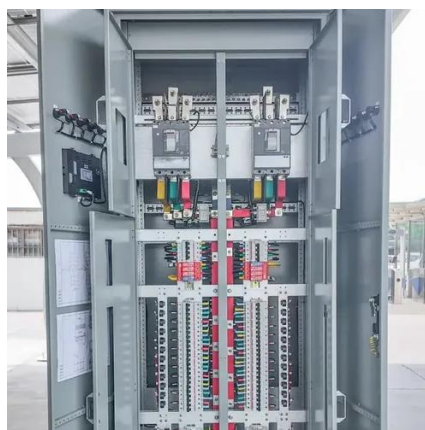


Electric Transmission and Transmission Facilities

Electric power transmission is the process by which large amounts of electricity produced at power plants, such as industrial-scale solar facilities, is transported over long distances for eventual use by ...

How is solar energy transmitted? , NenPower

Solar energy transmission involves intricate systems that combine photovoltaic technology, concentrated solar power, energy storage, and grid integration. The importance of ...





Contact Us

For catalog requests, pricing, or partnerships, please visit:

<https://iwap.com.pl>

Phone: +34 919 456 782

Email: info@iwap.com.pl

Scan the QR code to access our WhatsApp.

