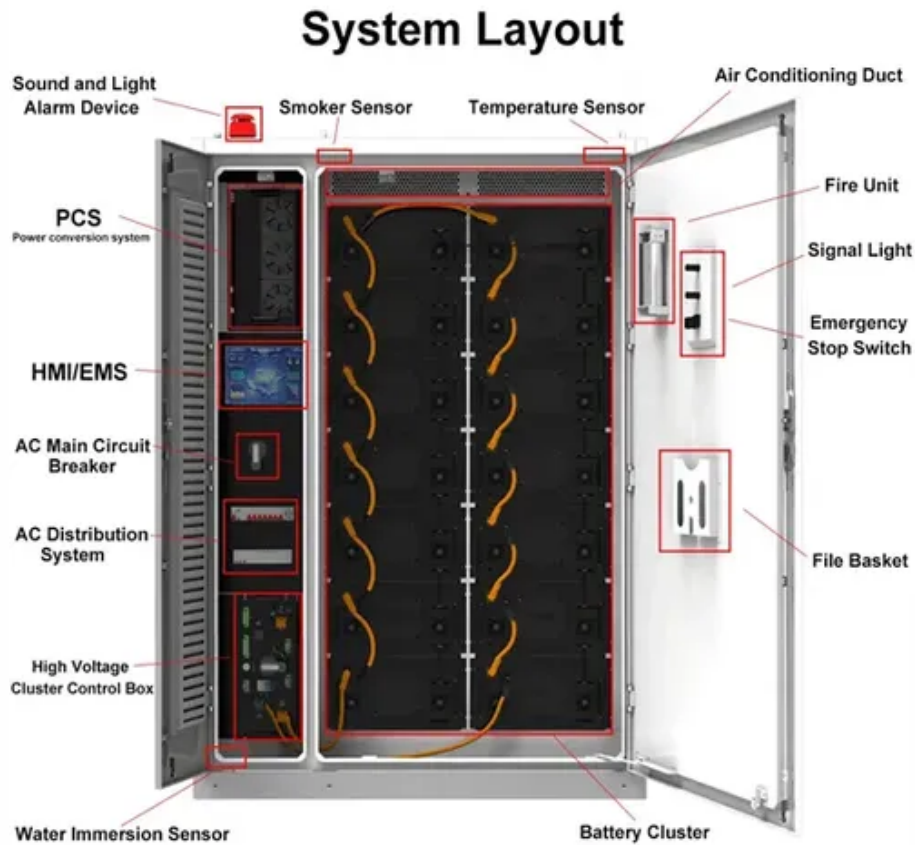




Photovoltaic support longitudinal beam structure





Overview

1-4, the present invention provides the following technical solutions: a longitudinal beam connecting structure of a photovoltaic bracket comprises a longitudinal beam body 1 and a longitudinal beam joint 2, wherein components matched with. Referring to fig. The results show that: (1) according to the general requirements of 4 rows and 5 columns fixed photovoltaic support, the typical permanent load of the PV support is 4679.4 N, the. Photovoltaic solar energy is one of the most economical and consolidated renewable sources in the market today. The constant rise in the price of electric energy together with the decrease in the prices of the elements that comprise a photovoltaic installation is generating a direct increase in the. This study involved the analysis of a photovoltaic power generation project in Hubei Province to compare differences in the structural loads of photovoltaic supports as outlined in Chinese, American, and European codes. Moreover, BAPV can create a space between photovoltaic arrays and the buildings'.



Photovoltaic support longitudinal beam structure

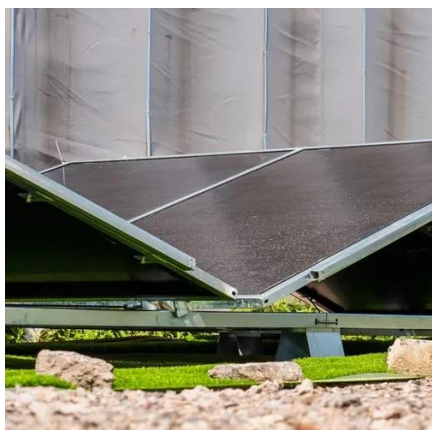


Details of the longitudinal beam.

This novel photovoltaic structure, which is very convenient to maintain and replace, includes photovoltaic cell components and a steel support system, shown in Fig. 8.

Photovoltaic support beam diagram

Download scientific diagram , Single axis sun-tracking mounting structure, concrete footings, support beams, and PV panels at Nellis Air Force Base, NV from publication: Solar Power



CN216356546U

The utility model aims to provide a longitudinal beam connecting structure of a photovoltaic bracket, which is firm in installation and high in construction efficiency.

[Photovoltaic support steel beam structure diagram](#)

In this paper, aiming to provide a contribution to this gap, a PVSP steel support structure and its key design parameters, calculation method, and finite element analysis (FEA) detailed with



[Photovoltaic support longitudinal beam structure](#)

In the solar photovoltaic power station project, PV support is one of the main structures, and fixed photovoltaic PV support is one of the most commonly used stents.

[Structures and support profiles for photovoltaic modules](#)

Circuitor offers a complete range of configurable support structures for any type of installation and roof. The pre-assembled triangle is the main element to create the supports with overhang or flat roof. It is ...



[Design framework for double-layer flexible photovoltaic support](#)

To better understand the structural behavior and prevent potential failure, this study presents a simplified analytical model for the design of double-layer flexible cable photovoltaic ...



[Mechanical Performance and Stress Redistribution Mechanisms in](#)



This study involved the analysis of a photovoltaic power generation project in Hubei Province to compare differences in the structural loads of photovoltaic supports as outlined in ...



LiFePO₄ Battery, safety

Wide temperature: -20~55°C

Modular design, easy to expand

The heating function is optional

Intelligent BMS

Cycle Life: > 6000

Warranty: 10 years



CN212210893U

The grooved stringer structure of a photovoltaic module of claim 1, wherein: bolt holes are formed in two side walls of the U-shaped groove of the longitudinal beam body; and a bolt is

[Analysis of PV Support Structures: From FEM Shell Model to Beam ...](#)

To provide a concrete example, let's analyze a typical configuration that we encounter daily: a vertical, rail-based system in which PV modules are supported by cold-formed purlins along ...





Contact Us

For catalog requests, pricing, or partnerships, please visit:

<https://iwap.com.pl>

Phone: +34 919 456 782

Email: info@iwap.com.pl

Scan the QR code to access our WhatsApp.

