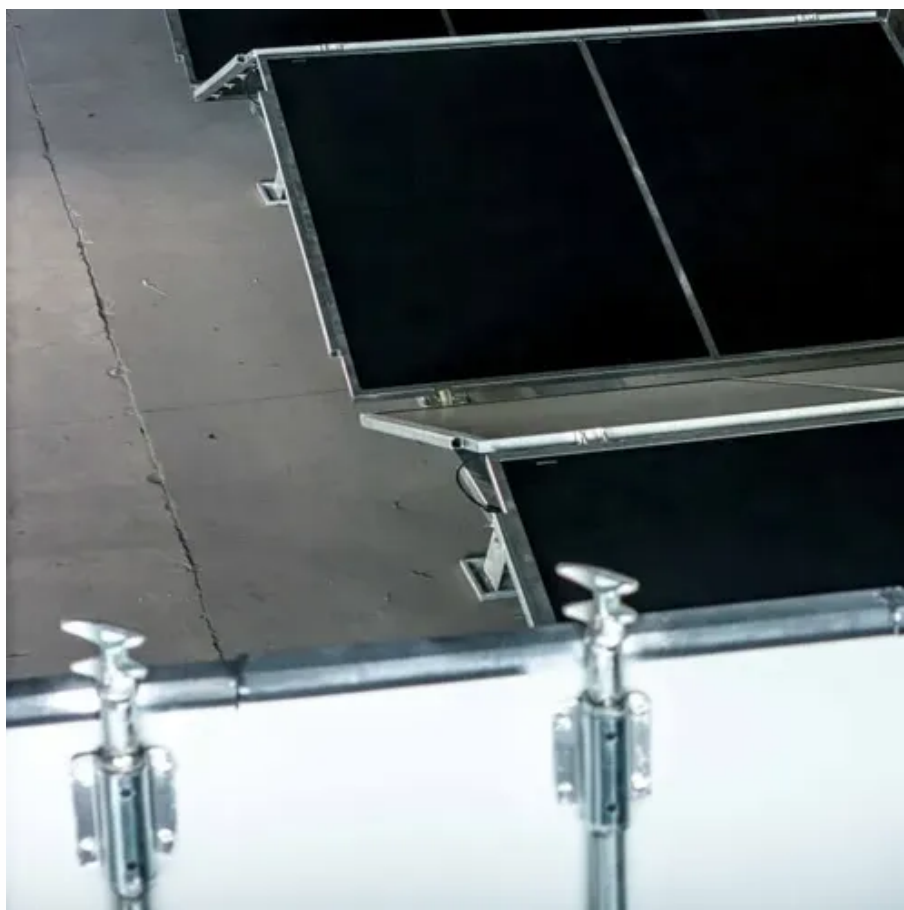




Photovoltaic panel parallel current measurement

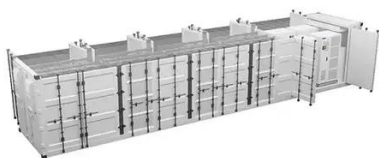




Photovoltaic panel parallel current measurement

[String Voltage and Current Calculation for Different Solar Panel](#)

Learn how to calculate string voltage & current for solar panel configurations with detailed analysis. When designing a solar photovoltaic (PV) system, calculating string voltage and current is ...



[How to Use a Multimeter for Solar Panel Testing](#)

For current measurement, switch the multimeter to the current mode, typically labeled as "A" or "DCmA" for direct current milliamperes, and connect it in series with the circuit. This allows



Chapter 5: Measuring current

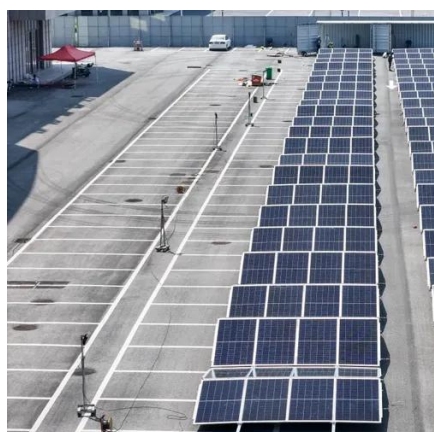
Introduction Figure 5-4: A clamp meter measures the current flowing through the conductor or bundle of conductors enclosed within the clamp.

[How to Measure Solar Panel Voltage and Current with a Multimeter](#)

Maximize your solar panel efficiency with our detailed guide on using a multimeter for testing voltage and current. Learn the critical steps for accurate measurements, essential ...



INTEGRATED DESIGN
EASY TO TRANSPORT AND INSTALL,
FLEXIBLE DEPLOYMENT



[How to measure the parallel current of solar panels](#)

In a parallel setup, where solar panels are interconnected, it is essential to measure the current correctly to assess the energy output accurately. To perform this task, position all meters in ...

Microsoft Word

The first section measures the direct current and voltage from one solar cell. The second section measures the voltage and current of two solar cells in parallel. The third section measures the ...



[I-V Characterization of Photovoltaic Cells and Panels](#)

Solar Panel Figure 1. The 2450 and 2460 making I-V measurements on a solar cell and a solar panel.



[How to Measure Solar Panel Output Current with digital Multimeter](#)



Learn how to measure solar panel output current and power using a digital multimeter. Step-by-step guide for DIY users, plus FAQs on solar panel testing.



Our Lifepo4 batteries can be connected in parallel and in series for larger capacity and voltage.



Solar Panel Power Calculator

Solar Panel Calculator is an online tool used in electrical engineering to estimate the total power output, solar system output voltage and current when the number of solar panel units connected in series or ...



Contact Us

For catalog requests, pricing, or partnerships, please visit:

<https://iwap.com.pl>

Phone: +34 919 456 782

Email: info@iwap.com.pl

Scan the QR code to access our WhatsApp.

