



Photovoltaic panel load-bearing requirements



1075KWHH ESS





Overview

Solar panels and all mounting hardware (frame, rails, etc.) weight does not exceed five (5) pounds per square foot (psf) or 45 pounds (lbs) concentrated load at each point of attachment or support, with a maximum weight of two-hundred (200) lbs per framing member. Before installation can begin, a few things need to be carefully checked to make sure the system runs safely and doesn't damage the roof. Roof material: The kind of material used for the roof can affect how it is put up and how much. Understanding the fundamentals of load analysis empowers you to make informed decisions for a successful installation. These loads are calculated to ensure the structure's load-bearing. Rooftop solar panel installation requires three critical structural engineering steps: (1) assessing current roof load capacity through professional evaluation of framing elements, (2) selecting appropriate mounting systems (ballasted, fully attached, or hybrid) based on capacity findings, and (3). 120 mph and ground snow load no greater than 10 pdf). We discuss why assessing load-bearing capacity is important, the risks of installing solar panels without proper assessment, and how to determine your roof's capacity.



Photovoltaic panel load-bearing requirements

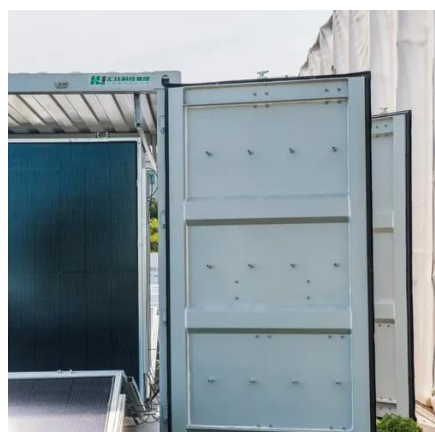


[Solar Array Weight and Loading Calculation Worksheet](#)

Solar panels and all mounting hardware (frame, rails, etc.) weight does not exceed five (5) pounds per square foot (psf) or 45 pounds (lbs) concentrated load at each point of attachment or support, with a maximum ...

[Structural Requirements for Solar Panels , LOTOS 2025](#)

Discover key structural requirements for solar panels, including mounting systems, load calculations, and durable support structures.



[Understanding Structural Engineering Requirements For Rooftop ...](#)

Complete guide to structural requirements for rooftop solar panels. Assess load capacity, choose mounting systems, and ensure building code compliance.

[Photovoltaic panel load-bearing standard specification](#)

To calculate the structural load of solar panels on a roof, several factors must be considered, including the number and weight of the panels, the weight of the mounting system and components, and any additional ...



[Assessing Your Roof's Load-Bearing Capacity for Solar Panels](#)

Calculating your roof's load-bearing capacity involves assessing the weight of the solar panels, considering structural support elements, and potentially reinforcing the roof to meet the required standards. ...



A Guide to Structural Requirements and Weight Limits for Rooftop Solar

But before you can bask in the glory of renewable power, there's an essential step you can't overlook - ensuring your roof can handle the weight and structure of a solar panel system.



[Detailed Structural Commentary for Rooftop PV Arrays for the ...](#)

t Guidelines (the Guidelines), also called "Step 1: Structural PV Array Mounting Requirements Checklist" (the "Checklist"). It describes the structural engineering principles and assumptions behind the Guidelines ...



[Structural Requirements for Solar Panels -- Exactus Energy](#)



This comprehensive guide outlines the structural requirements for solar panels and provides an overview on the inner workings of the installation process.



Structural Load Analysis

A complete guide to structural load analysis for solar panel installations. Learn about load types, mounting, and ensuring roof integrity.



[Roof-Mounted Solar PV Panels - Part 1: Structural Code Requirements](#)

In part two of this series, we will take a look at a few examples to illustrate common structural issues we have encountered on roof-mounted solar PV panel projects.





Contact Us

For catalog requests, pricing, or partnerships, please visit:

<https://iwap.com.pl>

Phone: +34 919 456 782

Email: info@iwap.com.pl

Scan the QR code to access our WhatsApp.

