



# Photovoltaic panel line blue line





## Overview

---

Conversely, the blue lines are associated with the photovoltaic cells themselves. When sunlight strikes the blue photovoltaic cells, electrons are knocked loose from. What does the solar blue line represent?

The solar blue line represents the demarcation between different energy states, showcasing the transition of solar energy capture and its transformation into usable power. it. Look closely at a solar panel, and you'll see a series of thin metallic lines running across the surface. Those lines are called the grid lines, and they're actually doing some serious work to light your house and keep you cool during. From a distance, photovoltaic panels appear to be solid black or blue. What are these lines?

What do they do?

Do all solar panels have a visible grid pattern?

The answer lies in the way PV panels are designed. Here are design tips for methods of PV system utility interconnection. The purpose of this article is to give you a basic understanding of the concepts and rules for connecting a solar panel system to the utility grid and the household electrical box or meter., whether a rooftop in California, a commercial warehouse in Texas, or a ground-mounted farm in the Midwest, then the CAD drawings are your blueprint. Get them right and your installation rolls smoothly; overlook something and you'll feel it, in.



## Photovoltaic panel line blue line



### [How to Read and Interpret Solar PV CAD Drawings](#)

These are precise, computer-aided design drawings (think AutoCAD or similar) that lay out everything for your PV system: panel placement, wiring routes, structural attachments, ...

### [What do the red, blue and black lines of solar panels represent?](#)

Conversely, the blue lines are associated with the photovoltaic cells themselves. These lines often indicate areas where the solar energy is being absorbed and converted into usable ...



### [How to connect a PV solar system to the utility grid](#)

There are two basic approaches to connecting a grid-tied solar panel system, as shown in the wiring diagrams below. The most common is a "LOAD SIDE" connection, made AFTER the main breaker. ...

### [What Are The Grid Lines On Solar Panels For?](#)

Look closely at a solar panel, and you'll see a series of thin metallic lines running across the surface. They're not there to look nice -- they have a specific purpose.



### [How to identify the positive and negative lines of solar energy](#)

To distinguish the positive and negative lines of solar energy systems, one must rely on specific identifiers such as wire color codes, labeling on connectors, and the design of the solar panel ...

### [How to read solar cell grid line , NenPower](#)

Efficient maintenance and inspection of solar panels, including their grid lines, are integral to ensuring longevity and optimal performance. Regular cleaning, checks for debris, and wear ...



### [Why Do Photovoltaic Panels Have Grid Lines? , IWS](#)

From a distance, photovoltaic panels appear to be solid black or blue. Get up closer, though, and you can see that solar modules have a pattern of white lines.



### [Why Do Photovoltaic Panels Have Grid Lines? , IWS](#)



Grid Lines on Photovoltaic Panels Have A Purpose  
Photovoltaic Panels with Less-Visible Grid Lines  
Choosing The Right Photovoltaic Panels to Power Your Home  
If you don't care for the white grid pattern, you can choose solar panels that do not have visible gap lines running through them. These photovoltaic modules still have the necessary gaps, but the black backing hides them. Eliminating the gap lines makes the photovoltaic modules more aesthetically appealing -- from ground level, they look completely See more on intermtnwindandsolar  
Published: Apr 7, 2017  
sunwatts



## How to connect a PV solar system to the utility grid ...

There are two basic approaches to connecting a grid-tied solar panel system, as shown in the wiring diagrams below. The most common is a "LOAD ...

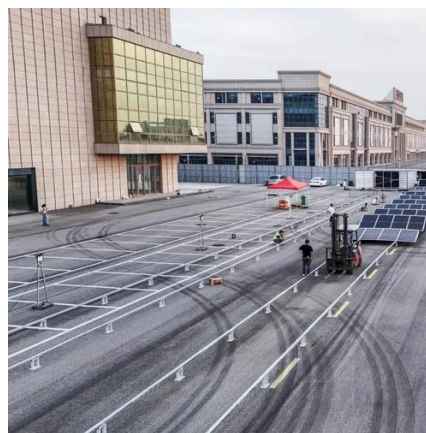


[What does the solar blue line represent?.. NenPower](#)

In greater detail, the blue line signifies wavelengths of visible light that are effectively absorbed by photovoltaic cells, maximizing energy conversion efficiency.

## [Why Your Solar Panels Need Four Lines \(And How to Get It Right\)](#)

Ever stared at the back of a solar panel and wondered why there are exactly four lines snaking through those silicon cells? Let's cut through the jargon: these four lines - two busbars and two bypass ...



[Why Solar Panels Blue or Black in color and has many White Lines?](#)



The solar panels are blue in color because they are made using Polycrystalline (which is a type of Silicon). The blue color has an anti-reflective property which increases the absorbing ...



## Contact Us

---

For catalog requests, pricing, or partnerships, please visit:

<https://iwap.com.pl>

Phone: +34 919 456 782

Email: [info@iwap.com.pl](mailto:info@iwap.com.pl)

Scan the QR code to access our WhatsApp.

