



Photovoltaic panel installation distance requirements



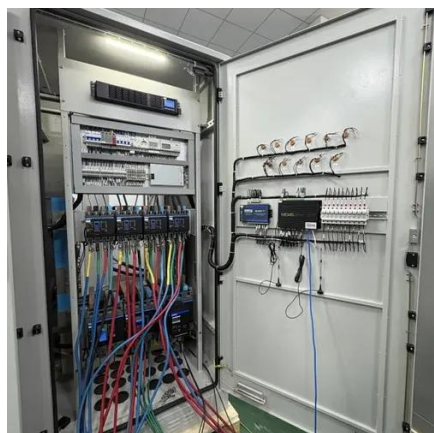


Overview

Distance requirements for solar panels from boundaries include: A minimum distance of 3 meters between adjacent buildings. When installing solar panel systems, it is crucial not only to consider the spacing between panels and installation angles but also to comply with local government and regulatory requirements concerning the distance between solar panels and property boundaries. Italy In Italy, the distance. In 2011, California adopted a Renewable Portfolio Standard (RPS) requiring that at least one-third of the state's electricity come from clean energy sources by 2020. The California RPS program was established in 2002 by Senate Bill (SB) 1078 (Sher, 2002) with the initial requirement that 20% of. When installing photovoltaic panels on one- and two-family homes, it's important to understand the requirements for access pathways and the requirements for setback from the ridge, which only apply to roofs with a slope greater than a 2-in-12 pitch. Access pathways are intended to provide access to. The Renewable Energy Ready Home (RERH) specifications were developed by the U. Proper setbacks facilitate firefighter access for roof operations, enable safe maintenance and cleaning, improve wind and snow performance, and reduce the risk of panel.



Photovoltaic panel installation distance requirements



[Solar Photovoltaic: SPECIFICATION, CHECKLIST AND GUIDE](#)

About the Renewable Energy Ready Home Specifications Assumptions of the RERH Solar Photovoltaic Specification Builder and Specification Limitations

- 1.5 Document the solar resource potential at the designated array location
- 3.3 Install a conduit for the AC wire run from the designated inverter location to the electric service panel
- 4.2 Record the name and Web address of the electric utility service provider
- 5.1 Landscape Plan
- 5.2 Placement of non-array roof penetrations and structural building elements

Appendix A: RERH Labeling Guidance

These specifications were created with certain assumptions about the house and the proposed solar energy system. They are designed for builders constructing single family homes with pitched roofs, which offer adequate access to the attic after construction. It is assumed that aluminum framed photovoltaic (PV) panels mounted on a "post" and rail mou See more on

Shade Calculator - EasySolar

Knowing the minimum angle of incidence of sunlight during the year, it is possible to determine the distance between successive rows of photovoltaic panels. The ...

[Distance Limitations for Solar Panels: A ...](#)

Comprehensive analysis of solar panel distance limits: Learn wiring impacts, efficiency tips, and installation strategies for optimal energy output.





Shade Calculator

Knowing the minimum angle of incidence of sunlight during the year, it is possible to determine the distance between successive rows of photovoltaic panels. The figure below shows the schematic ...



Solar Permitting Guidebook 4th Edition

Technical Information Bulletin for Solar PV Systems (on all types of buildings) -- Provides consistent and comprehensive information regarding current state requirements for solar ...



[Solar Photovoltaic: SPECIFICATION, CHECKLIST AND GUIDE](#)

To assist in evaluating each home, EPA has developed an online Renewable Energy Ready Home Solar Site Assessment Tool (RERH SSAT), which compares the solar resource potential of a proposed ...



Photovoltaic Tip Sheet

Electrical permits and inspections are required for all PV installations that connect to the building's electrical system. Some jurisdictions may also require an electrical plan review. Check with your local ...



[How to Calculate the Minimum Distance Between PV Panels?](#)



Understand the importance of minimum installation distance for solar panels, calculation methods, and relevant regulations to ensure efficient operation and compliance of solar energy ...

[Optimal Solar Panel Row Spacing Calculator, SolarMathLab](#)

Using this calculator, you can determine the ideal distance between rows based on your location, panel tilt, height, and seasonal sun position, ensuring your solar array performs at its best all year round. ...



Residential Solar Panel Requirements

There must be an access pathway in close proximity to the roof plane containing photovoltaic panels. The pathway must be on the same roof plane as the panels, on an adjacent roof ...



[Solar Panel Setback From Roof Edge: Guidelines, Codes, and Best](#)

Typical minimums are 2 to 3 feet (0.6 to 0.9 meters) from the edge for arrays located on pitched roofs. Maintenance and cleaning area: A practical, non-code-driven guideline is 1 to 2 feet ...



[Optimal Spacing Guidelines for Solar Roof Mounts](#)



Various factors determine the minimum distance between rows of solar panels. Recognizing these elements is essential for an efficient solar panel installation. Geographical ...





Contact Us

For catalog requests, pricing, or partnerships, please visit:

<https://iwap.com.pl>

Phone: +34 919 456 782

Email: info@iwap.com.pl

Scan the QR code to access our WhatsApp.

