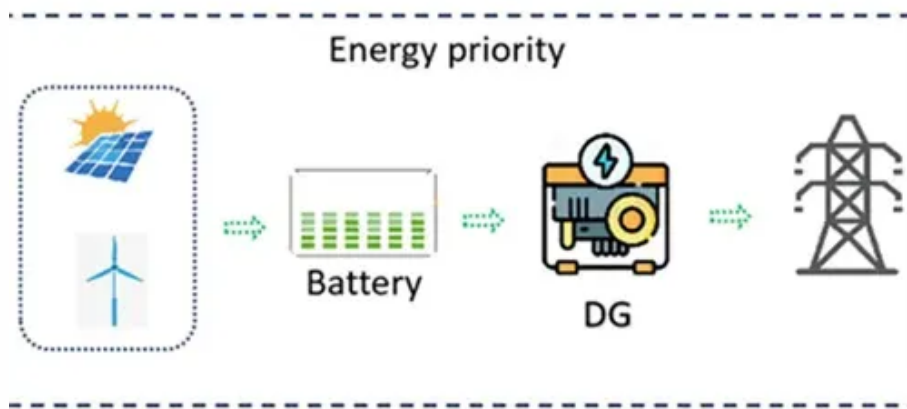




Photovoltaic panel circuit is not connected





Overview

Checking Voc (voltage open circuit) and Isc (current short circuit) measurements can help diagnose panel issues. Loose connectors and improperly seated terminals can cause low voltage or current output. But, what happens if a solar panel is not connected?

In this blog, we will discuss its consequences and understand if it is ok to leave it disconnected. However, it is crucial to consider the consequences of. A solar panel will not turn solar energy into direct current until there is a circuit. Because the voltage has nowhere to go, it will become heat in the solar cells. The most common cause of low power output in solar panels is obstructions or shadows on the array. Whether you're planning a new installation, maintaining an existing setup, or diagnosing.



Photovoltaic panel circuit is not connected



[What happens if the photovoltaic panel is not connected to the load](#)

It's also possible that one solar panel in your pv array failed. As the pv modules are connected in series, one failing pv module will shut down the entire system.

[Solar panel has voltage but no power - what's wrong? DIY Solar](#)

It could be a broken crystalline cell, a burned circuit breaker, a loose connection, a melted MC-4 connector, a broken wire, or a faulty solar panel if there are multiple panels connected ...



[Fix Your Solar Panel Wiring Problems: A Clear Path to Peak ...](#)

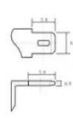
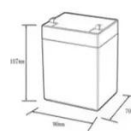
Connection problems in solar wiring systems often start with simple issues that can significantly impact your system's performance. One of the most common issues is loose ...

[Solar Panels Not Working? Find Out Why & How to Fix ...](#)

Is your solar system not living up to expectations? Find out why and how to fix it with our expert troubleshooting guide. Get your panels back on track!



12.8V6Ah



Nominal voltage (V):12.8
 Nominal capacity (Ah):6
 Rated energy (Wh):76.8
 Maximum charging voltage (V):14.6
 Maximum charging current (A):5
 Floating charge voltage (V):13.6-13.8
 Maximum continuous discharge current (A):10
 Maximum peak discharge current @10 seconds (A):20
 Maximum load power (W):100
 Discharge cut-off voltage (V):10.8
 Charging temperature (°C):-50
 Discharge temperature (°C):-20-+60
 Working humidity: <95% R.H (non condensing)
 Number of cycles (25 °C, 0.5c, 100%doD): >2000
 Cell combination mode: 32700-4*1p
 Terminal specification: T2 (6.3mm)
 Protection grade: IP65
 Overall dimension (mm):50*70*107mm
 Reference weight (kg):0.7
 Certification: un38.3/msds

What Happens if a Solar Panel is Not Connected to Anything?

A solar panel will not turn solar energy into direct current until there is a circuit. If there is no circuit, the solar panel will just "sit there" as the photons will not be converted into electricity.



How to connect the solar panel if it is not connected

To connect a solar panel that is not connected, follow these key steps: 1. Ensure the solar panel's orientation is optimal, facing the sun. 2. Check the connect...



What Happens if a Solar Panel is Not Connected to Anything?

What Happens to The Solar Panels Is It OK to Let The Solar Panels Get Hot? Is It OK to Leave A Solar Panel Disconnected? Is It Necessary to Unplug Solar Panels? What Happens to Excess Solar Power generated? Should I Cover Solar Panels When Not in use? Conclusion Yes, solar panels can be disconnected without damaging any components. However you need to keep the following in mind before unplugging the panels. Do not unplug the solar panels during daytime. Wait until it is evening just to be safe. The panels will always





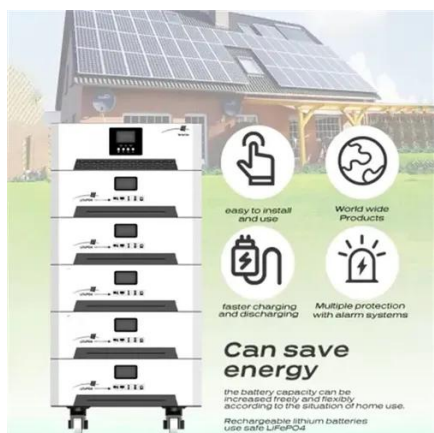
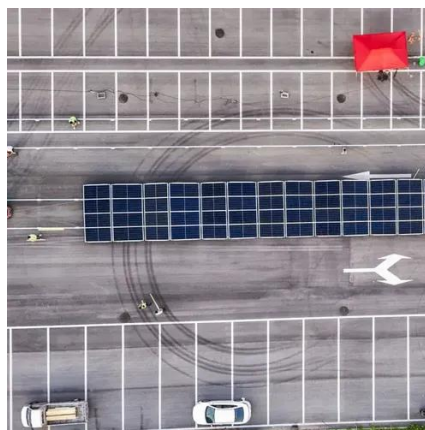
have power when the sun is out, so wait for nightfall to disconnect the system. The larger See more on portablesolarexpert ankersolix

What Happens If PV Modules Are Not Connected?

This article will talk about what happens if PV modules are not connected and offer guidance on preventive measures to help homeowners maintain the integrity ...

Solar Panels With No Load (Not Connected)

Solar panels can seem complicated when you aren't used to them. If you're not sure if yours is working correctly, there are four easy steps you can take to check.



[Solar Panel Not Working? How to Diagnose & Fix Common Issues](#)

Is your solar panel not working? Learn how to diagnose common issues and apply effective troubleshooting tips to restore peak efficiency. Keep your solar system running smoothly!

[What Happens if a Solar Panel is Not Connected?](#)

If a solar panel is not connected to an inverter, the produced DC (direct current) power from the solar panels cannot be converted into AC (alternating current) power.





[What Happens If PV Modules Are Not Connected? Let's Find Out](#)

This article will talk about what happens if PV modules are not connected and offer guidance on preventive measures to help homeowners maintain the integrity and safety of solar installations.





Contact Us

For catalog requests, pricing, or partnerships, please visit:

<https://iwap.com.pl>

Phone: +34 919 456 782

Email: info@iwap.com.pl

Scan the QR code to access our WhatsApp.

