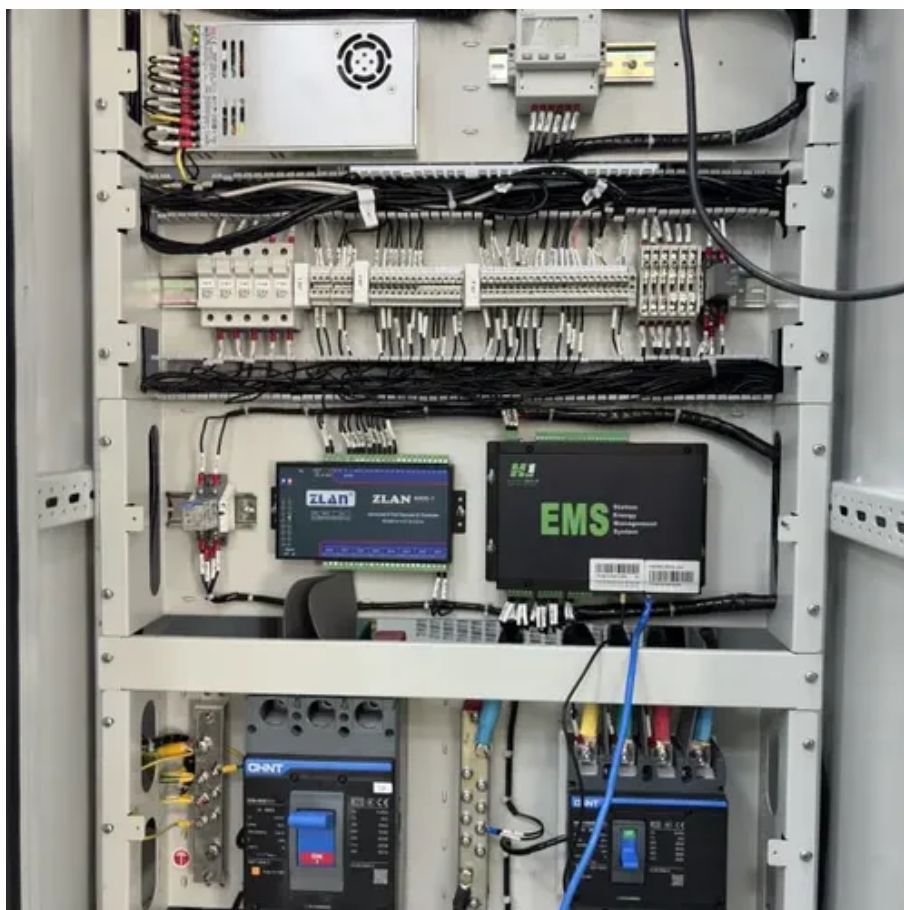




# Photovoltaic bracket post-installation detection plan





## Overview

---

Photovoltaic bracket post-installation detection plan Solar plan sets, including solar panel schematics, offer a comprehensive breakdown of panel-to-inverter wiring, grounding methods, and other PV panel-specific electrical details, guiding installers in the. Photovoltaic bracket post-installation detection plan Solar plan sets, including solar panel schematics, offer a comprehensive breakdown of panel-to-inverter wiring, grounding methods, and other PV panel-specific electrical details, guiding installers in the. Solar inspections — professional evaluations that check the installation, safety, efficiency and performance of solar power systems — are a key part of the installation process. This article will explore the value of solar power inspections in assessing safety and compliance and detecting issues. A consistent, simple post-installation checklist helps ensure your system operates at its best for decades. A solar power system is a long-term asset. Regular checks after. To ensure the smooth installation of photovoltaic system brackets and meet design requirements, Guidance Method For The Installation Of PV System Brackets are provided, including ground-mounted, rooftop, adjustable tilt angle, floating, Building-Integrated Photovoltaics (BIPV), bifacial, and. The Renewable Energy Ready Home (RERH) specifications were developed by the U. First, there are many fixing methods, such as pile foundation.



## Photovoltaic bracket post-installation detection plan



### [Photovoltaic ground bracket installation options](#)

The installation selection of photovoltaic ground brackets is mainly based on factors such as the fixing method of the bracket, terrain requirements, material selection, and the weather resistance, strength, ...

### [Optimizing Solar Inspections: A Construction Pro's Guide , Procore](#)

Various inspection methods are employed to confirm solar photovoltaic systems operate safely and efficiently, each using different techniques and technologies to assess components and ...



### [Guidance Method For The Installation Of PV System Brackets](#)

By following these detailed guidelines, photovoltaic projects can ensure the successful installation and long-term performance of various types of photovoltaic system brackets.

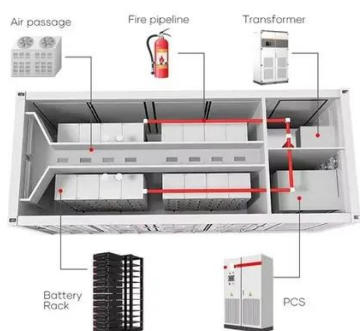
### [Solar Photovoltaic: SPECIFICATION, CHECKLIST AND GUIDE](#)

To assist in evaluating each home, EPA has developed an online Renewable Energy Ready Home Solar Site Assessment Tool (RERH SSAT), which compares the solar resource potential of a proposed ...



### [How to Run a Post-Installation Solar Checklist That Sticks](#)

A consistent, simple post-installation checklist helps ensure your system operates at its best for decades. This proactive approach allows you to identify minor issues early, preventing costly ...



### [Photovoltaic bracket test requirements and standards](#)

New standards under development include qualification of junction boxes, connectors, PV cables, and module integrated electronics as well as for testing the packaging used during transport of



### [Photovoltaic bracket post-installation detection plan](#)

Proper bracket installation is key to ensuring the longevity and performance of a solar panel system. Solar panel brackets are an important part of the installation process and should be installed by a ...

**TAX FREE**

**Product Model**  
HJ-ESS-215A(100KW/215KWh)  
HJ-ESS-115A(50KW 115KWh)

**Dimensions**  
1600\*1280\*2200mm  
1600\*1200\*2000mm

**Rated Battery Capacity**  
215KWH/115KWH

**Battery Cooling Method**  
Air Cooled/Liquid Cooled

### [2024 Photovoltaic Bracket Inspection Standards: What You Need to ...](#)



But here's the kicker: updated photovoltaic bracket inspection standards could make or break your next project. The latest version (released March 2024) introduces game-changing protocols that even ...



### [Solar Photovoltaic: SPECIFICATION, CHECKLIST AND GUIDE](#)

About the Renewable Energy Ready Home Specifications Assumptions of the RERH Solar Photovoltaic Specification Builder and Specification Limitations

- 1.5 Document the solar resource potential at the designated array location
- 3.3 Install a conduit for the AC wire run from the designated inverter location to the electric service panel
- 4.2 Record the name and Web address of the electric utility service provider
- 5.1 Landscape Plan
- 5.2 Placement of non-array roof penetrations and structural building elements

Appendix A: RERH Labeling Guidance

These specifications were created with certain assumptions about the house and the proposed solar energy system. They are designed for builders constructing single family homes with pitched roofs, which offer adequate access to the attic after construction. It is assumed that aluminum framed photovoltaic (PV) panels mounted on a "post" and rail mou See more on [PDF]

## **Photovoltaic bracket post-installation detection plan**

Proper bracket installation is key to ensuring the longevity and performance of a solar panel system. Solar panel brackets are an important part of the installation process and should be installed by a ...

### [Solar Panel Post Mount \(Fixing Options Guide\)](#)

Measure the height of the post and determine the



solar panel size. Take measurements for each mounting bracket and cut them out of metal or wood. Attach the brackets to the post with ...



### [Photovoltaic block bracket debugging plan](#)

The Distributed Photovoltaic Bracket is a bracket structure specially used to install and support distributed photovoltaic systems. It is designed with a focus on flexibility, lightweight and ...





## Contact Us

---

For catalog requests, pricing, or partnerships, please visit:

<https://iwap.com.pl>

Phone: +34 919 456 782

Email: [info@iwap.com.pl](mailto:info@iwap.com.pl)

Scan the QR code to access our WhatsApp.

